

For Research Use Only

CoraLite® Plus 750 Anti-Human CD13 (WM15)

Catalog Number: CL750-65186



Basic Information

Catalog Number:

CL750-65186

Size:

100 tests, 5 µl/test

Source:

Mouse

Isotype:

IgG1, kappa

GenBank Accession Number:

BC058928

GeneID (NCBI):

290

ENSEMBL Gene ID:

ENSG00000166825

UNIPROT ID:

P15144

Full Name:

alanyl (membrane) aminopeptidase

Calculated MW:

110 kDa

Purification Method:

Purified by protein-A affinity chromatography

CloneNo.:

WM15

Recommended Dilutions:

FC: 5 µl per 10⁶ cells in 100 µl suspension

Excitation/Emission maximum wavelengths:

755 nm / 780 nm

Applications

Tested Applications:

FC

Species Specificity:

Human, Non-human primates

Positive Controls:

FC : human blood,

Background Information

CD13, also named as APN, ANPEP (aminopeptidase N) or PEPN, belongs to the peptidase M1 family. CD13 is a heavily glycosylated, ~150-240 kDa, type-II membrane, expressed by most cells of myeloid origin including monocytes, macrophages, granulocytes, and their hematopoietic precursors. It is also abundantly expressed in the brush border of epithelial cells from renal proximal tubules and small intestine, in prostatic epithelial cells, in bile duct canaliculi, in mast cells, and, in some cases, in fibroblasts and smooth muscle cells. CD13 is a multifunctional protein and plays varying roles in cell migration, cell proliferation, cell differentiation and so on. CD13 participates in angiogenesis generating and modulating angiogenic signals, and can be a marker of angiogenic vessels. CD13 is also a pan-myeloid marker, present on mature granulocytes and monocytes. (PMID: 8805662, 10098327, 18603472, 18097955, 17897790, 17888402, 21339174)

Storage

Storage:

Store at 2-8°C. Avoid exposure to light. Stable for one year after shipment.

Storage Buffer:

PBS with 0.09% sodium azide and 0.5% BSA, pH7.3

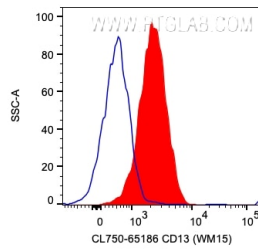
For technical support and original validation data for this product please contact:

T: 1 (888) 4PTGLAB (1-888-478-4522) (toll free in USA), or 1(312) 455-8498 (outside USA)

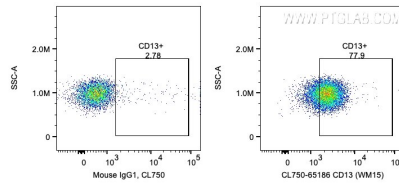
E: proteintech@ptglab.com
W: ptglab.com

This product is exclusively available under Proteintech Group brand and is not available to purchase from any other manufacturer.

Selected Validation Data



1X10⁶ human whole blood granulocytes were surface stained with 5 ul CoraLite® Plus 750 Anti-Human CD13 (CL750-65186, Clone: WM15) or Mouse IgG1 Isotype Control. Cells were not fixed.



1X10⁶ human whole blood granulocytes were surface stained with 5 ul CoraLite® Plus 750 Anti-Human CD13 (CL750-65186, Clone: WM15) or Mouse IgG1 Isotype Control. Cells were not fixed.