

For Research Use Only

Cardinal Red™-conjugated NDRG1 Polyclonal antibody



Catalog Number: CR-26902

Featured Product

Basic Information

Catalog Number:

CR-26902

Size:

100ul , Concentration: 1000 µg/ml by Nanodrop;

Source:

Rabbit

Isotype:

IgG

Immunogen Catalog Number:

AG25424

GenBank Accession Number:

BC006260

GeneID (NCBI):

10397

UNIPROT ID:

Q92597

Full Name:

N-myc downstream regulated 1

Calculated MW:

43 kDa

Observed MW:

43 kDa

Purification Method:

Antigen affinity purification

Excitation/Emission maxima wavelengths:

592 nm / 611 nm

Applications

Tested Applications:

FC (Intra)

Species Specificity:

human

Background Information

NDRG1 is a member of the N-myc down-regulated gene family which belongs to the alpha/beta hydrolase superfamily. NDRG1 is a highly conserved cytoplasmic protein involved in cell growth arrest and proliferation, cell differentiation, DNA damage response, heavy metal response, the hypoxia response, tumorigenesis, and metastasis. NDRG1 is a potent metastasis suppressor in multiple tumor-types. NDRG1 appears to serve as a putative tumor suppressor and is down-regulated in colorectal, gastric, cervical, ovarian and prostate cancers.

Storage

Storage:

Store at -20°C. Avoid exposure to light. Stable for one year after shipment.

Storage Buffer:

PBS with 50% Glycerol, 0.05% Proclin300, 0.5% BSA, pH 7.3.

Aliquoting is unnecessary for -20°C storage

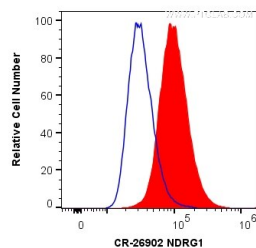
For technical support and original validation data for this product please contact:

T: 1 (888) 4PTGLAB (1-888-478-4522) (toll free in USA), or 1(312) 455-8498 (outside USA)

E: proteintech@ptglab.com
W: ptglab.com

This product is exclusively available under Proteintech Group brand and is not available to purchase from any other manufacturer.

Selected Validation Data



1X10⁶ HeLa cells were intracellularly stained with 0.2 ug Cardinal Red™ Anti-Human NDRG1 (CR-26902) (red), or 0.2 ug Control Antibody. Cells were fixed with 4% PFA and permeabilized with Flow Cytometry Perm Buffer (PF00011-C).