

For Research Use Only

# Cardinal Red™ Anti-Human DPP4/CD26 (BA5b)

Catalog Number: CR-65267



## Basic Information

Catalog Number:

CR-65267

Size:

100 tests, 5 µl/test

Source:

Mouse

Isotype:

IgG2a, kappa

GenBank Accession Number:

BC013329

GeneID (NCBI):

1803

Full Name:

dipeptidyl-peptidase 4

Calculated MW:

88 kDa

Purification Method:

Affinity purification

CloneNo.:

BA5b

Excitation/Emission maxima wavelengths:

592 nm / 611 nm

## Applications

Tested Applications:

FC

Species Specificity:

human

## Background Information

CD26, also known as DPP4 (dipeptidyl peptidase-4), is a 110 kDa type II cell-surface glycoprotein widely expressed on T cells, activated B cells, activated NK cells and myeloid cells as well as on epithelial cells, fibroblasts, mesothelium, and endothelial cells of a variety of tissues (PMID:33777580; 26919392). It has ecto-enzyme activity in its extracellular domain and cleaves amino-terminal dipeptides with either L-proline or L-alanine at the penultimate position (PMID: 9553764). CD26 plays roles in diverse biological processes such as immunoregulation, glucose homeostasis, and tumorigenesis (PMID: 33777580).

## Storage

Storage:

Store at 2-8°C. Avoid exposure to light. Stable for one year after shipment.

Storage Buffer:

PBS with 0.09% sodium azide and 0.5% BSA.

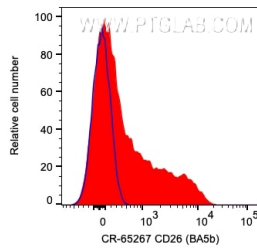
For technical support and original validation data for this product please contact:

T: 1 (888) 4PTGLAB (1-888-478-4522) (toll free in USA), or 1(312) 455-8498 (outside USA)

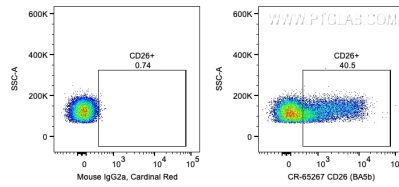
E: [proteintech@ptglab.com](mailto:proteintech@ptglab.com)  
W: [ptglab.com](http://ptglab.com)

This product is exclusively available under Proteintech Group brand and is not available to purchase from any other manufacturer.

## Selected Validation Data



1X10<sup>6</sup> human PBMCs were surface stained with 5 ul Cardinal Red™ Anti-Human CD26 (CR-65267, Clone:BA5b) (red) or Mouse IgG2a Isotype Control (66360-2-Ig, Clone: K11A1B2A2). Cells were not fixed.



1X10<sup>6</sup> human PBMCs were surface stained with 5 ul Cardinal Red™ Anti-Human CD26 (CR-65267, Clone:BA5b) or Mouse IgG2a Isotype Control. Cells were not fixed. Lymphocytes were gated.