

For Research Use Only

FITC Anti-Human CD106 (1.G11B1)



Catalog Number: FITC-65049

Basic Information

Catalog Number: FITC-65049	GenBank Accession Number: BC017276	Purification Method: Affinity purification
Size: 100tests , 10 µl/test	GeneID (NCBI): 7412	CloneNo.: 1.G11B1
Source: Mouse	Full Name: vascular cell adhesion molecule 1	
Isotype: IgG1	Calculated MW: 739 aa, 81 kDa	

Applications

Tested Applications:
FC

Species Specificity:
Human

Background Information

Vascular cell adhesion molecule 1 (VCAM1), also known as CD106, is a 110-kDa transmembrane glycoprotein belonging to the immunoglobulin gene superfamily. VCAM1 is expressed by cytokine-activated endothelium, interacts with integrin VLA4 ($\alpha 4\beta 1$) present on the surface of leukocytes, and mediates both adhesion and signal transduction. It is also expressed either constitutively or inducibly in a variety of other cell types, including vascular smooth muscle cells, differentiating skeletal muscle cells, renal and neural epithelial cells, macrophages (Kupffer cells), dendritic cells, and bone marrow stromal cells (PMID: 7507076, 11359843).

Storage

Storage:
Store at 2-8°C. Avoid exposure to light.

Storage Buffer:
PBS with 0.1% sodium azide.

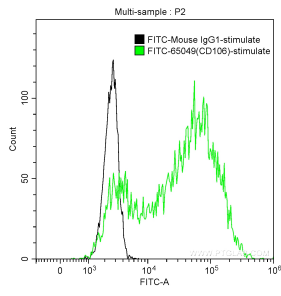
For technical support and original validation data for this product please contact:

T: 1 (888) 4PTGLAB (1-888-478-4522) (toll free
in USA), or 1(312) 455-8498 (outside USA)

E: proteintech@ptglab.com
W: ptglab.com

This product is exclusively available under Proteintech Group brand and is not available to purchase from any other manufacturer.

Selected Validation Data



1X10⁶ TNF-alpha treated HUVEC cells were surface stained with 10 ul FITC Anti-Human CD106 (FITC-65049, Clone: 1.G11B1) (green) or FITC-Mouse IgG1 isotype control (black). Cells were not fixed.