

For Research Use Only

FITC Anti-human CD11b (ICRF44)



Catalog Number: FITC-65116

Basic Information

Catalog Number: FITC-65116	GenBank Accession Number: BC096346	Purification Method: Affinity purification
Size: 100tests, Concentration: 5 µl(1µg)/test by Bradford method using BSA as the standard;	GeneID (NCBI): 3684	CloneNo.: ICRF44
Source: Mouse	Full Name: integrin, alpha M (complement component 3 receptor 3 subunit)	
Isotype: IgG1	Calculated MW: 1152 aa, 127 kDa	

Applications

Tested Applications:
FC

Species Specificity:
Human

Background Information

Integrins are cell adhesion receptors that are heterodimers composed of non-covalently associated α and β subunits (PMID: 9779984). CD11b, also known as Integrin alpha M or CR3A, belongs to the integrin alpha chain family. CD11b forms an α/β heterodimer with CD18 (integrin β 2). CD11b/CD18 is implicated in various adhesive interactions of monocytes, macrophages and granulocytes as well as in mediating the uptake of complement-coated particles and pathogens (PMID: 9558116; 20008295). CD11b/CD18 is a receptor for the complement protein fragment iC3b, and is also a receptor for fibrinogen, factor X and ICAM1 (PMID: 2971974; 15485828).

Storage

Storage:
Store at 2-8°C. Avoid exposure to light.

Storage Buffer:
Phosphate based buffer with 0.09% sodium azide and 0.1% gelatin, pH 7.2.

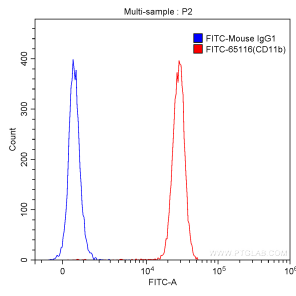
For technical support and original validation data for this product please contact:

T: 1 (888) 4PTGLAB (1-888-478-4522) (toll free
in USA), or 1(312) 455-8498 (outside USA)

E: proteintech@ptglab.com
W: ptglab.com

This product is exclusively available under Proteintech Group brand and is not available to purchase from any other manufacturer.

Selected Validation Data



1X10⁶ human peripheral blood granulocytes were surface stained with 1.00 ug FITC Anti-Human CD11b (FITC-65116, Clone:CRF44) (red) or 1.00 ug FITC Mouse IgG1 Isotype Control (blue). Samples were not fixed.