

For Research Use Only

HRP-conjugated Beta Tubulin Monoclonal antibody

Catalog Number: HRP-66240

14 Publications



Basic Information

Catalog Number: HRP-66240	GenBank Accession Number: BC000748	Purification Method: Protein A purification
Size: 100ul , Concentration: 2000 ug/ml by Nanodrop;	GeneID (NCBI): 10381	CloneNo.: 1D4A4
Source: Mouse	UNIPROT ID: Q13509	Recommended Dilutions: WB 1:20000-1:100000
Isotype: IgG2a	Full Name: tubulin, beta 3	
Immunogen Catalog Number: AG0117	Calculated MW: 450 aa, 50 kDa	
	Observed MW: 50-55 kDa	

Applications

Tested Applications: WB	Positive Controls: WB : HeLa cells,
Cited Applications: WB	
Species Specificity: human, mouse, rat, nematode, pig, zebrafish	
Cited Species: human, mouse, rat	

Background Information

There are five tubulins in human cells: alpha, beta, gamma, delta, and epsilon. Tubulins are conserved across species. They form heterodimers, which multimerize to form a microtubule filament. An alpha and beta tubulin heterodimer is the basic structural unit of microtubules. The heterodimer does not come apart, once formed. The alpha and beta tubulins, which are each about 55 kDa MW, are homologous but not identical. Alpha and beta tubulins have been widely used as loading controls. Tubulin expression may vary according to resistance to antimicrobial and antimitotic drugs. This antibody is conjugated with HRP.

Notable Publications

Author	Pubmed ID	Journal	Application
Nao Iguchi	35332157	Sci Rep	WB
Ya-Sheng Li	34217975	Bioorg Chem	WB
Zhanyang Qian	35280691	Int J Biol Sci	WB

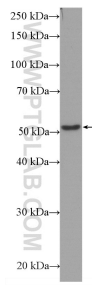
Storage

Storage:
Store at -20°C. Avoid exposure to light. Stable for one year after shipment.
Storage Buffer:
PBS with 50% Glycerol, 0.05% Proclin300, 0.5% BSA, pH 7.3.
Aliquoting is unnecessary for -20°C storage

For technical support and original validation data for this product please contact:
T: 1 (888) 4PTGLAB (1-888-478-4522) (toll free in USA), or 1(312) 455-8498 (outside USA)
E: proteintech@ptglab.com
W: ptglab.com

This product is exclusively available under Proteintech Group brand and is not available to purchase from any other manufacturer.

Selected Validation Data



HeLa cells were subjected to SDS PAGE followed by western blot with HRP-66240 (beta Tubulin antibody) at dilution of 1:50000 incubated at room temperature for 1.5 hours.