

HumanKine[®] TGF beta 1 (Recombinant Human)



Animal Component-Free	Human cell expressed	Tag-Free	Endotoxin Free
-----------------------	----------------------	----------	----------------

Product Description

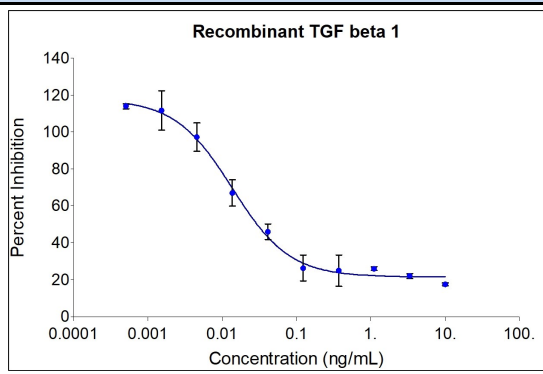
Animal-free Recombinant Human TGF beta 1 is expressed from human 293 cells as a mature disulfide-linked homodimer with an apparent molecular mass of 25 kDa. Tests indicate that TGF beta 1 is as efficient at inducing IL-17 expression in Th17 cells, as cytokine purified from human platelets. This product is produced in a human cell expression system with serum-free, chemically defined media.

Alternative Names	CED, DPD1, LAP, TGF ?1, TGF beta 1, tgf beta1, TGFB, TGFB1, TGFbeta, tgf-beta1
Source	Human Embryonic Kidney cells (HEK293). HEK293-derived TGF beta 1 protein

Specifications

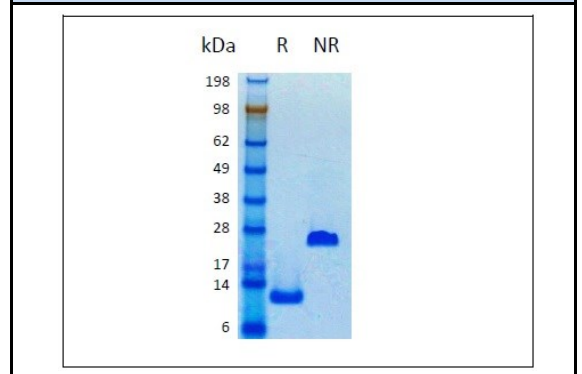
Test	Method	Specification
Activity	Dose-dependent inhibition of IL-4 induced proliferation of mouse HT-2 cells (BALB/c spleen activated by sheep erythrocytes in the presence of IL-2)	Typically ≤ 0.5 ng/mL EC50
Molecular Mass	SDS-PAGE	25 kDa, homodimer, nonglycosylated
Purity	SDS-PAGE	>95%
Endotoxin	LAL	<1 EU/ μ g

Activity Data



The activity was determined by the dose-dependent inhibition of IL-4 induced proliferation of mouse HT-2 cells (BALB/c spleen activated by sheep erythrocytes in the presence of IL-2) using Promega CellTiter96[®] Aqueous Non-Radioactive Cell Proliferation Assay.

SDS-PAGE



Preparation	
Shipping Temperature	ambient temperature
Formulation	50 mM NaOAc pH 4.5, See Certificate of Analysis for details
Reconstitution	Briefly centrifuge the vial before opening. It is recommended to reconstitute the protein in sterile 4 mM HCl containing 0.1% endotoxin-free recombinant human serum albumin (HSA).

Stability and Storage	Product Form	Temperature Conditions	Storage Time (From Date of Receipt)
	Lyophilized	-20°C to -80°C	Until Expiry Date
	Lyophilized	Room Temperature	2 weeks
	Reconstituted as per CofA	-20°C to -80°C	6 months
	Reconstituted as per CofA	4°C	1 week
Avoid repeated freeze-thaw cycles.			

www.ptglab.com

Document #: FR-QA118-101 Rev 0
Data Sheet Version #: 1

Proteintech Group, Inc.
5500 Pearl Street, Suite 400 Rosemont, IL 60612
t: 1-888-478-4522; f: 1-312-455-8408
Email: proteintech@ptglab.com