

Recombinant Human OSM

Catalog Number: **HZ-1030**

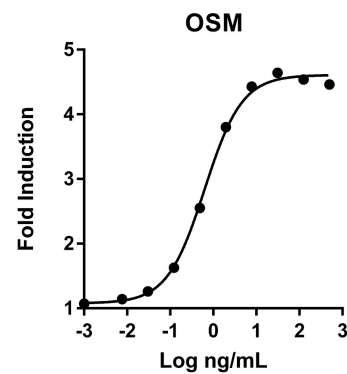
HEK293 expressed

Endotoxin-free

Animal-component free

Technical Specifications

Species	human
Expression	HEK293
Activity	Typically ≤ 1 ng/mL EC50
Purity	>95%
Endotoxin	<1 EU/ μ g
Molecular Mass	30 kDa, monomer, glycosylated
Formulation	1x PBS, See Certificate of Analysis for details
Gene ID	5008



The activity was determined by the dose-dependent stimulation of the proliferation of human TF-1 cells (human erythroleukemic indicator cell line) using Promega CellTiter96[®] Aqueous Non-Radioactive Cell Proliferation Assay.

Reconstitution Buffer

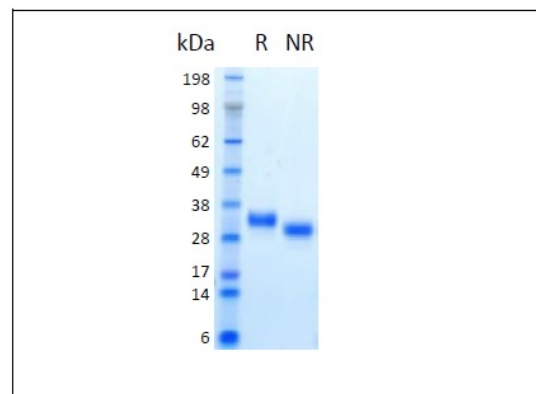
Briefly centrifuge the vial before opening. It is recommended to reconstitute the protein in sterile 1xPBS containing 0.1% endotoxin-free recombinant human serum albumin (HSA).

Stability and Storage

Lyophilized proteins are stable for 1 year from the date of receipt if stored between (-20°C) and (-80°C). Upon reconstitution we recommend that the solution can be stored at (4°C) for short term or at (-20°C) to (-80°C) for long term. Repeated freeze thaw cycles should be avoided with reconstituted products.

Product Description

Animal-free Recombinant Human Oncostatin M is expressed in human 293 cells as a monomeric glycoprotein with an apparent molecular mass of 30 kDa. This higher molecular mass is due to glycosylation and is not seen in the E. coli expressed form of this cytokine (22kDa). Glycosylation contributes to stability in cell growth media and other applications. This product is produced in a human cell expression system with serum-free, chemically defined media.



The protein was resolved by SDS-polyacrylamide gel electrophoresis and the gel was stained with Coomassie blue.

Synonyms

oncostatin M, OSM

For technical support and original validation data for this product please contact:

T: 1 (888) 4PTGLAB (1-888-478-4522) (toll free in USA), or
1(312) 455-8498 (outside USA)

E: proteintech@ptglab.com
W: ptglab.com

Humankine[®] product line
HUMANZYME
Now part of Proteintech Group[®]