

Recombinant Human LEFTY-1

Catalog Number: **HZ-1109**

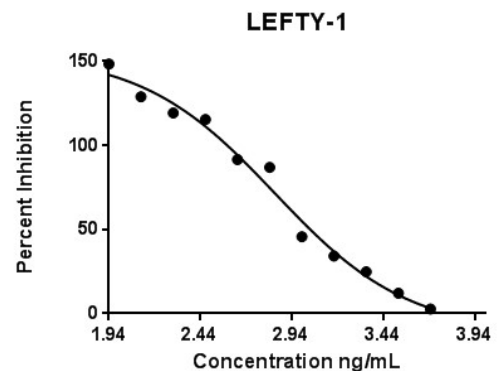
HEK293 expressed

Endotoxin-free

Animal-component free

Technical Specifications

Species	human
Expression	HEK293
Activity	Typically $\leq 2.5 \mu\text{g/mL}$ EC50
Purity	>95%
Endotoxin	<1 EU/ μg
Molecular Mass	38 kDa, monomer, glycosylated
Formulation	10 mM Tris-HCl pH 7.4 + 50 mM NaCl + 0.5% CHAPS, See Certificate of Analysis for details
Gene ID	10637



The activity of Lefty-1 was determined by the dose-dependent inhibition of proliferation of the Mv1Lu cell line (mink lung epithelial cells) using ProMega CellTiter96 aqueous Non-radioactive cell proliferation assay.

Reconstitution Buffer

Briefly centrifuge the vial before opening. It is recommended to reconstitute the protein in sterile water containing 0.1% endotoxin-free recombinant human serum albumin (HSA).

Stability and Storage

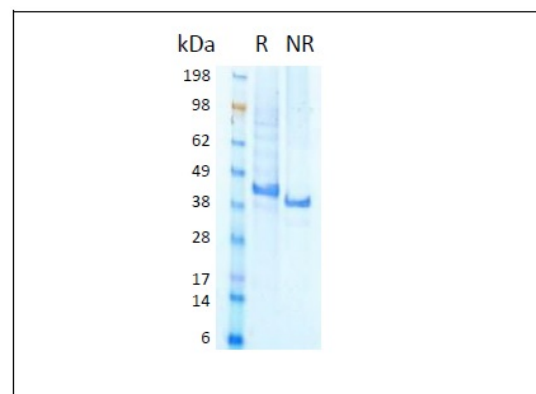
Lyophilized proteins are stable for 1 year from the date of receipt if stored between (-20°C) and (-80°C). Upon reconstitution we recommend that the solution can be stored at (4°C) for short term or at (-20°C) to (-80°C) for long term. Repeated freeze thaw cycles should be avoided with reconstituted products.

Product Description

Animal-free Recombinant Human LEFTY-1 is expressed in human 293 cells as a monomeric glycoprotein with an apparent molecular mass of 38 kDa. This cytokine is produced in a human cell expression system with serum-free, chemically defined media. Production in human 293 cells offers authentic glycosylation, contributing to stability in cell growth media.

Synonyms

LEFTB, LEFTY1, LEFTYB, Protein lefty 1, Protein lefty B



The protein was resolved by SDS-polyacrylamide gel electrophoresis and the gel was stained with Coomassie blue.

For technical support and original validation data for this product please contact:

T: 1 (888) 4PTGLAB (1-888-478-4522) (toll free in USA), or
1(312) 455-8498 (outside USA)

E: proteintech@ptglab.com
W: ptglab.com

Humankine[®] product line
HUMANZYME
Now part of Proteintech Group[®]