

HumanKine® IL-23 (Recombinant Human)



Animal Component-Free	Human cell expressed	Tag-Free	Endotoxin Free
-----------------------	----------------------	----------	----------------

Product Description

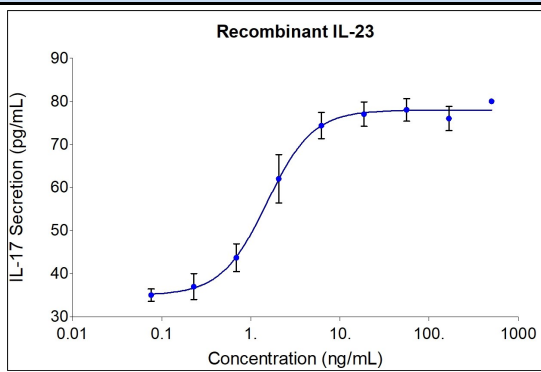
Animal-free Recombinant Human IL-23 is expressed in human 293 cells as a heterodimeric glycoprotein composed of two disulfide-linked subunits (p40 cystine linked to p19). IL-23 has been shown to enhance proliferation of memory T cells. It also stimulates the production of IFN-gamma in NK cells, induces IL-17 production, and drives Th17 mediated responses. Furthermore, it is known that IL-23 takes a vital part in the inflammation process and that it is associated with auto immune diseases.

Alternative Names	IL 23, IL 23 A, IL 23 subunit alpha, IL 23A, IL 23p19, IL23, IL-23, IL23A, IL23P19, Interleukin 23 subunit alpha, Interleukin 23 subunit p19, P19, SGRF
Source	Human Embryonic Kidney cells (HEK293). HEK293-derived IL-23 protein

Specifications

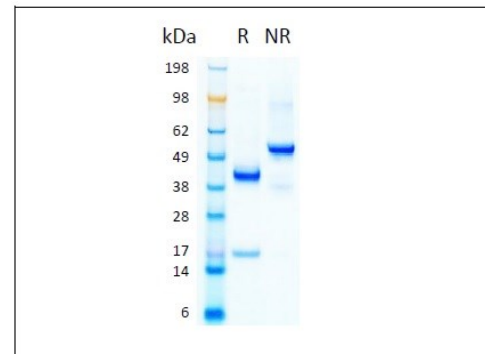
Test	Method	Specification
Activity		Typically ≤ 4 ng/mL EC50
Molecular Mass	SDS-PAGE	55 kDa, heterodimer, glycosylated
Purity	SDS-PAGE	>95%
Endotoxin	LAL	<1 EU/ μ g

Activity Data



The activity was determined by the dose-dependent secretion of IL-17 in response to IL-23 using murine splenocytes using IL17 ELISA kit.

SDS-PAGE



Preparation	
Shipping Temperature	ambient temperature
Formulation	1x PBS, See Certificate of Analysis for details
Reconstitution	Briefly centrifuge the vial before opening. It is recommended to reconstitute the protein in sterile 1xPBS containing 0.1% endotoxin-free recombinant human serum albumin (HSA).

Stability and Storage	Product Form	Temperature Conditions	Storage Time (From Date of Receipt)
	Lyophilized	-20°C to -80°C	Until Expiry Date
	Lyophilized	Room Temperature	2 weeks
	Reconstituted as per CofA	-20°C to -80°C	6 months
	Reconstituted as per CofA	4°C	1 week
Avoid repeated freeze-thaw cycles.			

www.ptglab.com

Document #: FR-QA118-101 Rev 0
Data Sheet Version #:

Proteintech Group, Inc.
5500 Pearl Street, Suite 400 Rosemont, IL 60612
t: 1-888-478-4522; f: 1-312-455-8408
Email: proteintech@ptglab.com