

IHC*easy* GFAP Ready-To-Use IHC Kit

Catalog Number: **KHC0002**

General Information

Sample type:
FFPE tissue

Cited sample type:

Reactivity:
Human, rat, mouse

Cited Reactivity:

Assay type:
Immunohistochemistry

Primary antibody type:
Mouse Monoclonal

Secondary antibody type:
Polymer-HRP-Goat anti-Mouse

Kit Component

Component	Size	Concentration
Antigen Retrieval Buffer	100 mL	50×
Washing Buffer	100 mL ×2	20×
Blocking Buffer	5 mL	RTU
Primary Antibody	5 mL	RTU
Secondary Antibody	5 mL	RTU
Chromogen Component A	0.2 mL	RTU
Chromogen Component B	4 mL	RTU
Signal Enhancer	5 mL	RTU
Counter Staining Reagent	5 mL	RTU
Mounting Media	5 mL	RTU
Control Slide	1 slide (Optional)	FFPE
Datasheet	1 Copy	
Manual	1 Copy	

Storage Instructions

All the reagents are stored at 2-8°C. The kit is stable for 6 months from the date of receipt.

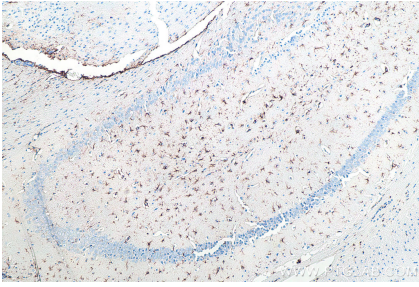
Background

GFAP (Glial fibrillary acidic protein), an intermediate-filament (IF) protein, is specifically expressed in cells of astroglial lineage and is widely used to mark the astroglia in the brain. It is also used as a marker for intracranial and intraspinal tumors arising from astrocytes.

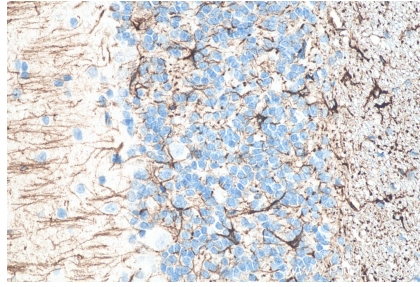
Synonyms

GFAP, glial fibrillary acidic protein, Intermediate filament protein

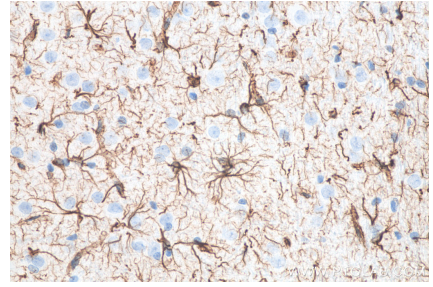
Selected Validation Data



Immunohistochemical analysis of paraffin-embedded mouse brain tissue slide using KHC0002 (GFAP IHC Kit).



Immunohistochemical analysis of paraffin-embedded rat cerebellum tissue slide using KHC0002 (GFAP IHC Kit).



Immunohistochemical analysis of paraffin-embedded rat brain tissue slide using KHC0002 (GFAP IHC Kit).