

For Research Use Only

PE Anti-Human CD107a (H4A3)

Catalog Number: PE-65051



Basic Information

Catalog Number: PE-65051	GenBank Accession Number: BC006345	Purification Method: Affinity purification
Size: 100tests , 10 µl/test	GeneID (NCBI): 3916	CloneNo.: H4A3
Source: Mouse	Full Name: lysosomal-associated membrane protein 1	Recommended Dilutions: IF 1:50-1:500
Isotype: IgG1		

Applications

Tested Applications: IF,FC	Positive Controls: IF : HeLa cells,
Species Specificity: Human	

Background Information

LAMP1 (CD107a) is a heavily glycosylated membrane protein enriched in the lysosomal membrane. LAMP1 is extensively glycosylated with asparagine-linked oligosaccharides which protect it from intracellular proteolysis (PMID: 10521503). Although LAMP1 is expressed largely in the endosome-lysosomal membrane of cells, it is also found on the plasma membrane (PMID: 16168398). Elevated LAMP1 expression at the cell surface has also been detected during platelet and granulocytic cell activation, as well as in some tumor cells (PMID: 29085473). LAMP1 functions to provide selectins with carbohydrate ligands. This protein has also been shown to be a marker of degranulation on lymphocytes such as CD8+ and NK cells and may also play a role in tumor cell differentiation and metastasis (PMID: 18835598; 29085473; 9426697).

Storage

Storage:
Store at 2-8°C. Avoid exposure to light.
Storage Buffer:
PBS with 0.1% sodium azide and a stabilizer.

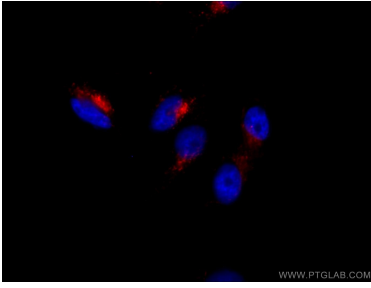
For technical support and original validation data for this product please contact:

T: 1 (888) 4PTGLAB (1-888-478-4522) (toll free in USA), or 1(312) 455-8498 (outside USA)

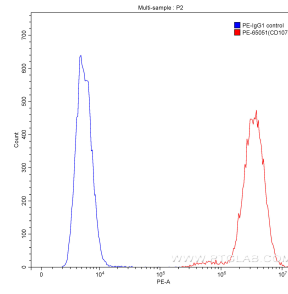
E: proteintech@ptglab.com
W: ptglab.com

This product is exclusively available under Proteintech Group brand and is not available to purchase from any other manufacturer.

Selected Validation Data



Immunofluorescent analysis of (4% PFA) fixed HeLa cells using PE-Anti-Human CD107a antibody (PE-65051, Clone: H4A3) at dilution of 1:50.



1×10^6 HeLa cells were intracellularly stained with 10 μ l PE-Anti-Human CD107a antibody (PE-65051, clone H4A3) (red) or 10 μ l PE-mouse IgG1 isotype control (blue). Cells were fixed with 90% MeOH.