

For Research Use Only

PE Mouse IgG1 Isotype Control (MOPC-21)



Catalog Number: PE-65124

Basic Information

Catalog Number:

PE-65124

Size:

100ug, 0.2 mg/ml

Source:

Mouse

Isotype:

IgG1

GenBank Accession Number:

GeneID (NCBI):

16017

Full Name:

immunoglobulin heavy constant
gamma 1 (G1m marker)

Purification Method:

Affinity purification

CloneNo.:

MOPC-21

Applications

Tested Applications:

FC

Species Specificity:

mouse

Background Information

The MOPC-21 immunoglobulin is useful as an isotype-matched control. The MOPC-21 immunoglobulin has an unknown binding specificity and is used as an isotype control for mouse IgG1 antibodies. This antibody has been quality-tested for flow cytometry as negative control.

Storage

Storage:

Store at 2-8°C. Avoid exposure to light.

Storage Buffer:

Phosphate based buffer with 0.09% sodium azide and 0.1% gelatin, pH 7.2.

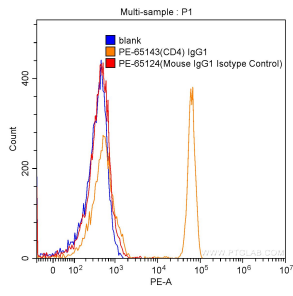
For technical support and original validation data for this product please contact:

T: 1 (888) 4PTGLAB (1-888-478-4522) (toll free
in USA), or 1(312) 455-8498 (outside USA)

E: proteintech@ptglab.com
W: ptglab.com

This product is exclusively available under Proteintech Group brand and is not available to purchase from any other manufacturer.

Selected Validation Data



1X10⁶ human peripheral blood lymphocytes were surface stained with 0.50 ug PE Mouse IgG1 Isotype Control (PE-65124, clone: MOPC-21) (red) or with 0.50 ug PE Anti-Human CD4 (PE-65143, clone: RPA-T4) (orange), or not stained (blank) (blue). Cells were not fixed.