

For Research Use Only

PE Rat IgG2b Isotype Control (LTF-2)

Catalog Number: PE-65211



Basic Information

Catalog Number:

PE-65211

Size:

100ug, 0.2 mg/mL

Source:

Rat

Isotype:

IgG2b, kappa

GenBank Accession Number:

GeneID (NCBI):

Full Name:

Purification Method:

Affinity purification

CloneNo.:

LTF-2

Excitation/Emission maxima
wavelengths:

496 nm, 565 nm / 578 nm

Applications

Tested Applications:

FC

Species Specificity:

Background Information

The LTF-2 immunoglobulin is useful as an isotype-matched control. The LTF-2 immunoglobulin has an unknown binding specificity and is used as an isotype control for rat IgG2b antibodies. This antibody has been quality-tested for flow cytometry as negative control.

Storage

Storage:

Store at 2-8°C. Avoid exposure to light. Stable for one year after shipment.

Storage Buffer:

Phosphate based buffer with 0.09% sodium azide and 0.1% gelatin, pH 7.2.

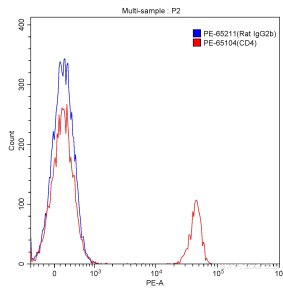
For technical support and original validation data for this product please contact:

T: 1 (888) 4PTGLAB (1-888-478-4522) (toll free
in USA), or 1(312) 455-8498 (outside USA)

E: proteintech@ptglab.com
W: ptglab.com

This product is exclusively available under Proteintech Group brand and is not available to purchase from any other manufacturer.

Selected Validation Data



1×10^6 BALB/c mouse splenocytes were surface stained with 0.5 μ g PE Rat IgG2b Isotype Control (PE-65211, Clone: LTF-2) (blue) or 0.5 μ g PE Anti-Mouse CD4 (PE-65104, Clone: GK1.5) (red). Cells were not fixed.