

For Research Use Only

PE Anti-Human ALCAM (3A6)

Catalog Number: PE-65223



Basic Information

Catalog Number:

PE-65223

Size:

100 tests, 5 µl/test

Source:

Mouse

Isotype:

IgG1, kappa

GenBank Accession Number:

BC057809

GeneID (NCBI):

214

UNIPROT ID:

Q13740

Full Name:

activated leukocyte cell adhesion molecule

Calculated MW:

105 kDa

Purification Method:

Affinity purification

CloneNo.:

3A6

Recommended Dilutions:

FC: 5 µl per 10⁶ cells in 100 µl suspension

Excitation/Emission maxima wavelengths:

496 nm, 565 nm / 578 nm

Applications

Tested Applications:

FC

Species Specificity:

Human

Positive Controls:

FC : PHA-treated human PBMCs,

Background Information

Activated leukocyte cell adhesion molecule (ALCAM, also known as CD166) is a cell adhesion molecule that belongs to the immunoglobulin superfamily. It is involved in cell-cell adhesion through homophilic and heterophilic (to CD6) interactions. ALCAM is widely expressed in a variety of normal tissues and cell types, including activated T cells and monocytes, epithelial cells, fibroblasts, neuronal cells, hepatocytes, and bone marrow mesenchymal stem cells (PMID: 7760007; 25221999). Altered ALCAM expression has been associated with the differentiation state and progression in some neoplasms including melanoma, prostate, colorectal, and breast cancers (PMID: 20461761; 18172759).

Storage

Storage:

Store at 2-8°C. Avoid exposure to light. Stable for one year after shipment.

Storage Buffer:

PBS with 0.09% sodium azide and 0.5% BSA, pH7.3

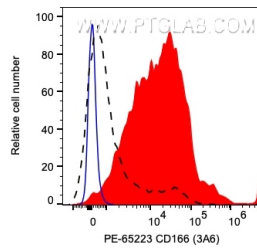
For technical support and original validation data for this product please contact:

T: 1 (888) 4PTGLAB (1-888-478-4522) (toll free in USA), or 1(312) 455-8498 (outside USA)

E: proteintech@ptglab.com
W: ptglab.com

This product is exclusively available under Proteintech Group brand and is not available to purchase from any other manufacturer.

Selected Validation Data



1X10⁶ PHA-treated human PBMCs were surface stained with 5 ul PE Anti-Human ALCAM (PE-65223, Clone:3A6) (red) or unstained (blue). The black dashed line indicates PBMCs surface stained with 5 ul PE Anti-Human ALCAM. Cells were not fixed. Monocytes were gated.