

For Research Use Only.
Not For Use In Diagnostics.

Multi-rAb® CoraLite® Plus 594- Goat Anti-Rabbit Recombinant Secondary Antibody (H+L)



www.ptglab.com

Catalog Number: **RGAR004**

Information

Catalog Number:

RGAR004

Host:

Goat

Applications:

IF, FC

Reactivity:

Rabbit

Physical State:

Liquid

Conjugation:

CoraLite® Plus 594

Clonality:

Multiclonal recombinant

Recommended Dilutions

1:200-1:1000 for IF and FC

Fluorophore

CoraLite® Plus 594, Amax=588 nm, Emax=604 nm

Safety Notes

This product is for research use only, not for diagnostic or therapeutic use.

Storage

Storage:

Store at -20°C. Stable for one year after shipment.

Storage Buffer:

PBS with 50% glycerol, 10 mg/mL BSA, 0.1% Proclin-300, pH 7.4.

Aliquoting is unnecessary

Purity

The antibody was purified from culture media supernatant by immunoaffinity chromatography using Protein G beads.

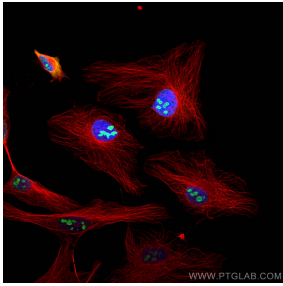
For technical support and original validation data for this product please contact:

T: 1 (888) 4PTGLAB
(1-888-478-4522)
(toll free in USA),
or 1(312) 455-8498
(outside USA)

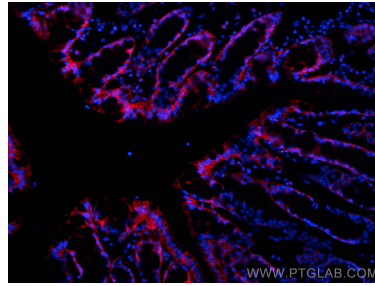
E : proteintech@ptglab.com
W: ptglab.com

This product is exclusively available under Proteintech Group brand and is not available to purchase from any other manufacturer.

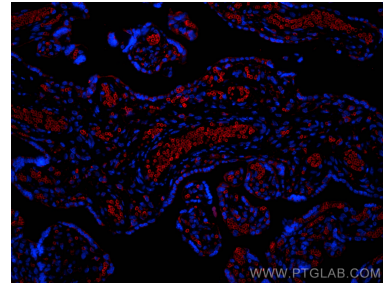
Selected Validation Data



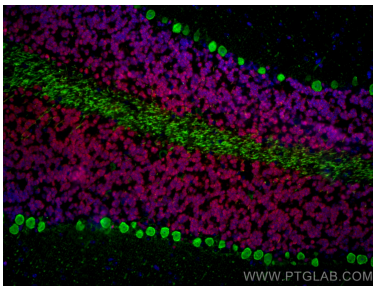
Immunofluorescence of HeLa cells: HeLa cells were fixed with 4% PFA and stained with Rabbit anti-Alpha Tubulin polyclonal antibody (11224-1-AP, 1:200, red) and mouse anti-NPM1 monoclonal antibody (60096-1-Ig, 1:1000, green). Multi-rAb@ CoraLite® Plus 594-Goat Anti-Rabbit Recombinant Secondary Antibody (H+L) (RGAR004, 1:500) and Multi-rAb@ CoraLite® Plus 488-Goat Anti-Mouse Recombinant Secondary Antibody (H+L) (RGAM002, 1:500) were used for detection.



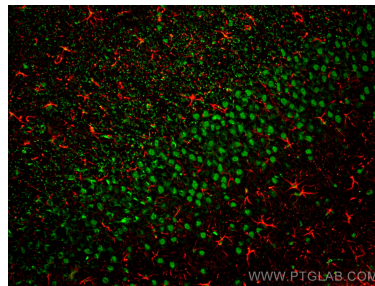
Immunofluorescent analysis of (4% PFA) fixed OCT-embedded frozen mouse colon tissue using E-cadherin antibody (20874-1-AP) at dilution of 1:400 and Multi-rAb@ CoraLite® Plus 594-Goat Anti-Rabbit Recombinant Secondary Antibody (H+L) (RGAR004).



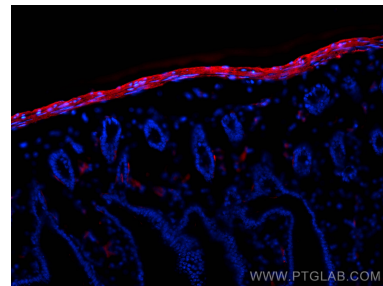
Immunofluorescent analysis of (4% PFA) fixed paraffin-embedded human placenta tissue using Band 3 / AE1 antibody (81066-1-RR, Clone: 3K21) at dilution of 1:200 and Multi-rAb@ CoraLite® Plus 594-Goat Anti-Rabbit Recombinant Secondary Antibody (H+L) (RGAR004). Heat mediated antigen retrieval with Tris-EDTA buffer (pH 9.0).



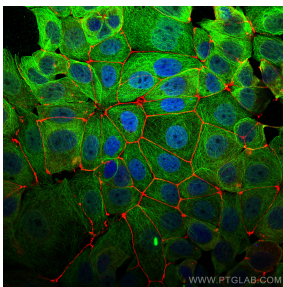
Immunofluorescence of mouse cerebellum: mouse cerebellum FFPE section was stained with Rabbit anti-NeuN polyclonal antibody (26975-1-AP, 1:200, red) and mouse anti-Calbindin-D28k monoclonal antibody (66394-1-Ig, 1:200, green). Multi-rAb@ CoraLite® Plus 594 conjugated Recombinant Goat anti-rabbit secondary antibody (RGAR004, 1:500) and Multi-rAb@ CoraLite® Plus 488 conjugated Goat Anti-Mouse Recombinant Secondary Antibody (H+L) were used for detection (RGAM002, 1:500) .



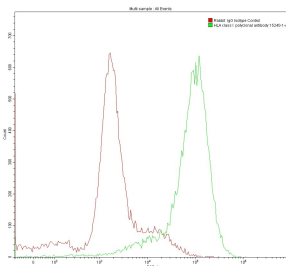
Immunofluorescence of rat brain: rat brain FFPE section was stained with Rabbit anti-GFAP polyclonal antibody (16825-1-AP, 1:200, red) and mouse anti-NeuN monoclonal antibody (66836-1-Ig, green). Multi-rAb@ CoraLite® Plus 594 conjugated Recombinant Goat anti-rabbit secondary antibody (RGAR004, 1:500) and Multi-rAb@ CoraLite® Plus 488 conjugated Goat Anti-Mouse Recombinant Secondary Antibody (H+L) were used for detection (RGAM002, 1:500) .



Immunofluorescent analysis of (4% PFA) fixed OCT-embedded frozen mouse small intestine tissue using smooth muscle actin antibody (14395-1-AP) at dilution of 1:400 and Multi-rAb@ CoraLite® Plus 594-Goat Anti-Rabbit Recombinant Secondary Antibody (H+L) (RGAR004).



Immunofluorescence of MCF-7 cells: MCF-7 cells were fixed with 4% PFA and stained with Rabbit anti-ZO1 polyclonal antibody (21773-1-AP, 1:2000, red) and mouse anti-Alpha Tubulin monoclonal antibody (66031-1-Ig, 1:1000, green). Multi-rAb@ CoraLite® Plus 594-Goat Anti-Rabbit Recombinant Secondary Antibody (H+L) (RGAR004, 1:500) and Multi-rAb@ CoraLite® Plus 488-Goat Anti-Mouse Recombinant Secondary Antibody (H+L) (RGAM002, 1:500) were used for detection.



1×10^6 MOLT4 were surface stained with 0.2 ug Anti-HLA class I rabbit polyclonal antibody (15240-1-AP) and Rabbit IgG Isotype Control. Multi-rAb@ CoraLite® Plus 594-Goat Anti-Rabbit Recombinant Secondary Antibody (H+L) RGAR004 was used at 1:500 for detection.