

For Research Use Only.
Not For Use In Diagnostics.

HRP-conjugated Affinipure Goat Anti-Rat IgG(H+L)

Catalog Number:SA00001-15



www.ptglab.com

Information

Catalog Number:

SA00001-15

Host:

Goat

Applications:

ELISA, WB

Reactivity:

Rat

Physical State:

Liquid

Conjugation:

HRP

Recommended Dilutions

1:2000-1:10,000 for western blotting with ECL substrates

1:1000-1:20,000 for ELISA and Western blotting with chromogenic substrates

Stabilizer

3 mg/ml BSA

Safety Notes

This product is for research use only, not for diagnostic or therapeutic use.

Storage

Storage:

Store at -20°C. Avoid repeated freeze / thaw cycles.

Storage Buffer:

0.01M Sodium phosphate, 0.25M NaCl, 50% glycerol, pH7.6

Aliquoting is unnecessary for -20°C storage

Purity

The antibody was purified from antisera by immunoaffinity chromatography using antigens coupled to agarose beads.

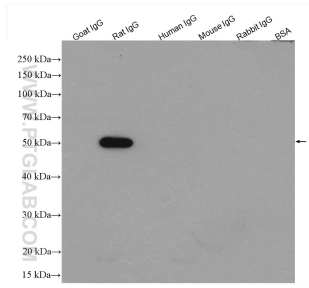
For technical support and original validation data for this product please contact:

T: 1 (888) 4PTGLAB
(1-888-478-4522)
(toll free in USA),
or 1(312) 455-8498
(outside USA)

E : proteintech@ptglab.com
W: ptglab.com

This product is exclusively available under Proteintech Group brand and is not available to purchase from any other manufacturer.

Selected Validation Data



IgG proteins of various species were subjected to SDS PAGE followed by western blot with SA00001-15 (HRP-conjugated Affinipure Goat Anti-Rat IgG(H+L) at dilution of 1:1000 incubated at room temperature for 1.5 hours.