

For Research Use Only.
Not For Use In Diagnostics.

Fluorescein (FITC)-conjugated Affinipure Goat Anti-Mouse IgG(H+L)



www.ptglab.com

Catalog Number:SA00003-1

Information

Catalog Number:

SA00003-1

Host:

Goat

Applications:

IF, Flow cyt

Reactivity:

Mouse

Physical State:

Liquid

Conjugation:

FITC

Recommended Dilutions

1:20-1:100 for most applications

Preservative

0.02% Sodium Azide

Fluorophore

Fluorescein-5-isothiocyanate(FITC)
Amax=492nm;Emax=520nm

Fluorophore Protein

9.0ug/mg; 3.4 moles FITC per mole IgG

Stabilizer

5mg/ml BSA

Safety Notes

This product is for research use only,not for diagnostic or therapeutic use.

Storage

Storage:

Store at -20°C. Avoid repeated freeze / thaw cycles.

Storage Buffer:

0.01M Sodium phosphate, 0.25M NaCl, 50% glycerol, pH7.6

Aliquoting is unnecessary for -20°C storage

Purity

The antibody was purified from antisera by immunoaffinity chromatography using antigens coupled to agarose beads.

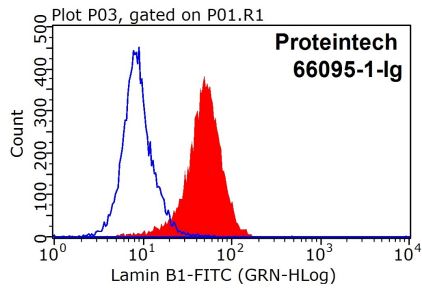
For technical support and original validation data for this product please contact:

T: 1 (888) 4PTGLAB
(1-888-478-4522)
(toll free in USA),
or 1(312) 455-8498
(outside USA)

E : proteintech@ptglab.com
W: ptglab.com

This product is exclusively available under Proteintech Group brand and is not available to purchase from any other manufacturer.

Selected Validation Data



1X10⁶ HeLa cells were stained with 0.2 ug Lamin B1 antibody (66095-1-Ig, red) and Fluorescein (FITC)-conjugated Affinipure Goat Anti-Mouse IgG(H+L) (SA00003-1) with dilution 1:100. Control antibody (blue). Cell were fixed with 90% MeOH.