

For Research Use Only.  
Not For Use In Diagnostics.

# CoraLite488-conjugated Goat Anti-Rabbit IgG(H+L)

Catalog Number:SA00013-2



## Information

Catalog Number:

SA00013-2

Host:

Goat

Applications:

IF, FC

Reactivity:

Rabbit

Physical State:

Liquid

Conjugation:

CoraLite®488

Clonality:

Polyclonal

## Recommended Dilutions

1:100-1:1000

## Preservative

0.02% Sodium Azide

## Fluorophore

CL488 Fluorescent Dye, Amax=488 nm; Emax=515 nm

## Stabilizer

5 mg/ml BSA

## Safety Notes

This product is for research use only, not for diagnostic or therapeutic use.

## Storage

Storage:

Store at -20°C. Stable for one year after shipment.

Storage Buffer:

0.01 M Sodium phosphate, 0.25 M NaCl, 50% glycerol, 5 mg/ml BSA, 0.02% Sodium Azide, pH 7.6.

Aliquoting is unnecessary for -20°C storage

## Purity

The antibody was purified from antisera by immunoaffinity chromatography using antigens coupled to agarose beads.

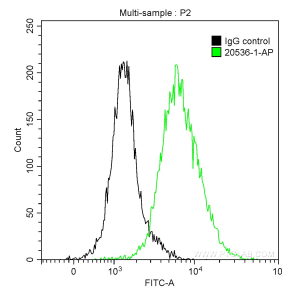
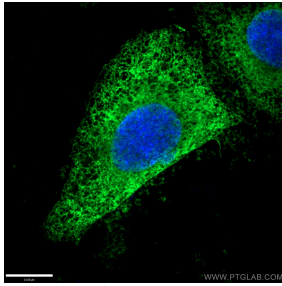
For technical support and original validation data for this product please contact:

T: 1 (888) 4PTGLAB  
(1-888-478-4522)  
(toll free in USA),  
or 1(312) 455-8498  
(outside USA)

E : proteintech@ptglab.com  
W: ptglab.com

This product is exclusively available under Proteintech Group brand and is not available to purchase from any other manufacturer.

## Selected Validation Data



Immunofluorescent analysis of (10% Formaldehyde) fixed HepG2 cells using 10427-2-AP (Calnexin antibody) at dilution of 1:50 and CoraLite®488-Conjugated Goat Anti-Rabbit IgG(H+L) (SA00013-2).

1X10<sup>6</sup> HepG2 cells were intracellularly stained with 0.2 ug Anti-Human Beta Actin (20536-1-AP) and CoraLite®488-Conjugated Goat Anti-Rabbit IgG(H+L) (SA00013-2) at dilution 1:1000 (green), and 0.2 ug Control Antibody. Cells were fixed with 90% MeOH.