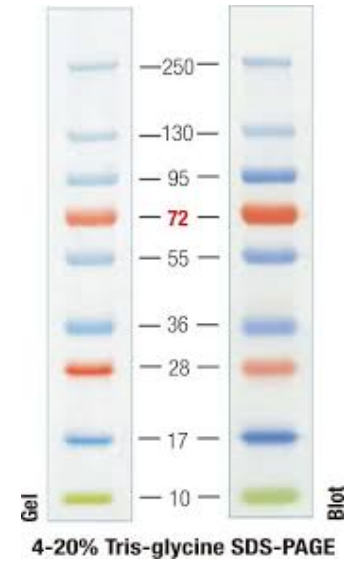


B2^{''}: 25.5 kDa



Pulled with Mouse Monoclonal V5
Primary Antibody: B2^{''} Rabbit Polyclonal;
overnight in 1% milk
Secondary Antibody: Goat α -rabbit IR 680;
RT 1 hour in 1% milk

Figure: Immunoblot analysis whole cell extract from induced HeLa cells. V5-tagged SNRPB2 was immunoprecipitated from whole cell extract using a α -V5 mouse monoclonal antibody. Immunoprecipitated samples were ran in a 10% SDS-PAGE alongside an input sample and blotted with α -snRPB2 rabbit polyclonal antibody (Proteintech, cat. #13512-1-AP).