

Nur für Forschungszwecke

GRB7 Polyklonaler Antikörper

Katalog-Nr.:10045-1-Ig

Vorgestelltes Produkt

2 Publikationen



Allgemeine Informationen

Katalog-Nr.:
10045-1-Ig

Größe:

150ul, Konzentration: 3000 µg/ml von 2886
Nanodrop und 1027 µg/ml durch die
Bradford-Methode mit BSA als
Standard;

Wirt:

Kaninchen

Isotyp:

IgG

Immunogen Katalognummer:
AG0023

GenBank-Zugangsnummer:

BC006535

GeneID (NCBI):

2886

Vollständiger Name:

growth factor receptor-bound protein
7

Berechnete Masse:

532 aa, 60 kDa

Beobachtete Masse:

60-70 kDa

Reinigungsmethode:

Protein-A-Reinigung

Empfohlene Verdünnungen:

WB 1:500-1:2000
IP 0.5-4.0 µg für IP und 1:500-1:1000
für WB
IHC 1:50-1:500
IF 1:10-1:100

Anwendungen

Geprüfte Anwendungen:

IF, IHC, IP, WB, ELISA

In Publikationen genannte Anwendungen:

IHC, WB

Getestete Reaktivität:

Human, Maus

Zitierte Arten:

Human, Maus

**Hinweis-IHC: Antigendemaskierung mit TE-
Puffer pH 9,0 empfohlen. (*) Wahlweise
kann die Antigendemaskierung auch mit
Citratpuffer pH 6,0 erfolgen.**

Positivkontrollen:

WB: A431-Zellen, HEK-293-Zellen

IP: A431-Zellen,

IHC: humanes Kolonkarzinomgewebe,

IF: A431-Zellen,

Hintergrundinformationen

Grb7 belongs to a family of adapter proteins. This family, including Grb10, Grb7 and Grb 14, contains a proline-rich, a RA, a PH, a BPS and SH2 domain. Grb7 associate with a number of receptors including EGFR and FAK. Functions of Grb7 include mobility because it associates receptors such FAK, and direct evidence from overexpression of this proteins. This antibody recognize the N-terminal of GRB7.

Bemerkenswerte Veröffentlichungen

Verfasser	Pubmed ID	Journal	Anwendung
Qiong Xu	34783299	Bioengineered	WB,IHC
Mu-Xin Zhang	36699092	Front Pharmacol	WB

Lagerung

Lagerungsbedingungen:

Bei -20°C lagern. Nach dem Versand ein Jahr lang stabil

Lagerungspuffer:

PBS mit 0.02% Natriumazid und 50% Glycerin pH 7.3.

Aliquotieren ist nicht notwendig bei -20°C Lagerung

*** 20ul-Größen enthalten 0.1% BSA

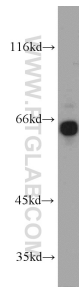
For technical support and original validation data for this product please contact:

T: 1 (888) 4PTGLAB (1-888-478-4522) (toll free
in USA), or 1(312) 455-8498 (outside USA)

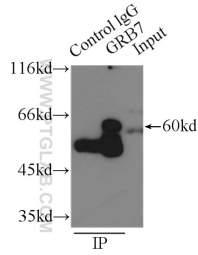
E: proteintech@ptglab.com
W: ptglab.com

This product is exclusively available under Proteintech
Group brand and is not available to purchase from any
other manufacturer.

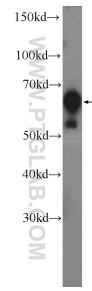
Ausgewählte Validierungsdaten



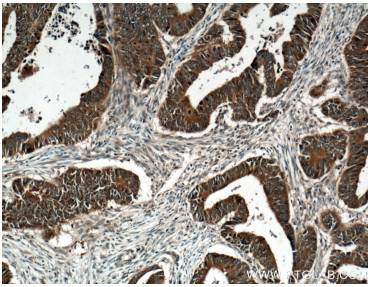
A431 cells were subjected to SDS PAGE followed by western blot with 10045-1-Ig (GRB7 antibody) at dilution of 1:1000 incubated at room temperature for 1.5 hours.



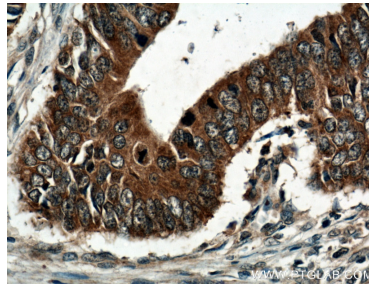
IP Result of anti-GRB7 (IP:10045-1-Ig, 3ug; Detection:10045-1-Ig 1:500) with A431 cells lysate 3300ug.



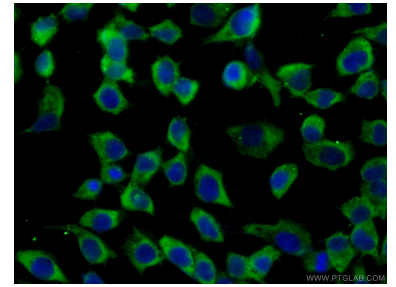
HEK-293 cells were subjected to SDS PAGE followed by western blot with 10045-1-Ig (GRB7 Antibody) at dilution of 1:1000 incubated at room temperature for 1.5 hours.



Immunohistochemical analysis of paraffin-embedded human colon cancer tissue slide using 10045-1-Ig (GRB7 Antibody) at dilution of 1:200 (under 10x lens). Heat mediated antigen retrieval with Tris-EDTA buffer (pH 9.0).



Immunohistochemical analysis of paraffin-embedded human colon cancer tissue slide using 10045-1-Ig (GRB7 Antibody) at dilution of 1:200 (under 40x lens). Heat mediated antigen retrieval with Tris-EDTA buffer (pH 9.0).



Immunofluorescent analysis of (-20°C Ethanol) fixed A431 cells using 10045-1-Ig(GRB7 antibody) at dilution of 1:25 and Alexa Fluor 488-conjugated AffiniPure Goat Anti-Rabbit IgG(H+L).