

Allgemeine Informationen

Katalog-Nr.: 10048-2-Ig	GenBank-Zugangsnummer: BC040540	Reinigungsmethode: Protein-A-Reinigung
Größe: 150ul , Konzentration: 1200 µg/ml von5925 Nanodrop;	GeneID (NCBI): retinoblastoma 1	Empfohlene Verdünnungen: WB 1:5000-1:50000 IP 0.5-4.0 ug für IP und 1:500-1:1000 für WB
Wirt: Kaninchen	Vollständiger Name: retinoblastoma 1	
Isotyp: IgG	Berechnete Masse: 110 kDa	
Immunogen Katalognummer: AG0006	Beobachtete Masse: 110 kDa	

Anwendungen

Geprüfte Anwendungen: IP, WB, ELISA	Positivkontrollen: WB : A431-Zellen, Jurkat-Zellen, MCF-7-Zellen IP : A431-Zellen,
In Publikationen genannte Anwendungen: CoIP, IF, IHC, WB	
Getestete Reaktivität: Human	
Zitierte Arten: Human, Zebrafisch	

Hintergrundinformationen

RB1, also named as pp110, pRb and p105 Rb, belongs to the retinoblastoma protein (RB) family. It is a key regulator of entry into cell division that acts as a tumor suppressor. RB1 acts as a transcription repressor of E2F1 target genes. The underphosphorylated, active form of RB1 interacts with E2F1 and represses its transcription activity, leading to cell cycle arrest. It is directly involved in heterochromatin formation by maintaining overall chromatin structure and, in particular, that of constitutive heterochromatin by stabilizing histone methylation. It recruits and targets histone methyltransferases SUV39H1, SUV420H1 and SUV420H2, leading to epigenetic transcriptional repression. RB1 controls histone H4 'Lys-20' trimethylation and inhibits the intrinsic kinase activity of TAF1. It mediates transcriptional repression by SMARCA4/BRG1 by recruiting a histone deacetylase (HDAC) complex to the c-FOS promoter. In resting neurons, transcription of the c-FOS promoter is inhibited by BRG1-dependent recruitment of a phospho-RB1-HDAC1 repressor complex. Upon calcium influx, RB1 is dephosphorylated by calcineurin, which leads to release of the repressor complex. In case of viral infections, interactions with SV40 large T antigen, HPV E7 protein or adenovirus E1A protein induce the disassembly of RB1-E2F1 complex thereby disrupting RB1's activity. This antibody is a rabbit polyclonal antibody raised against human RB1 fusion protein.

Bemerkenswerte Veröffentlichungen

Verfasser	Pubmed ID	Journal	Anwendung
Qinghua Wang	29033588	Onco Targets Ther	WB
Shuai Huang	31660066	Theranostics	WB
Chao Zhang	36093042	iScience	WB,CoIP

Lagerung

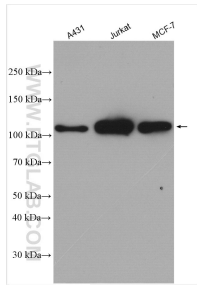
Lagerungsbedingungen:
Bei -20°C lagern. Nach dem Versand ein Jahr lang stabil
Lagerungspuffer:
PBS mit 0.02% Natriumazid und 50% Glycerin pH 7.3.
 Aliquotieren ist nicht notwendig bei -20°C Lagerung

*** 20ul-Größen enthalten 0.1% BSA

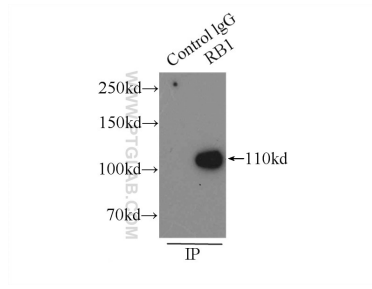
For technical support and original validation data for this product please contact:
 T: 1 (888) 4PTGLAB (1-888-478-4522) (toll free in USA), or 1(312) 455-8498 (outside USA)
 E: proteintech@ptglab.com
 W: ptglab.com

This product is exclusively available under Proteintech Group brand and is not available to purchase from any other manufacturer.

Ausgewählte Validierungsdaten



A431 cells were subjected to SDS PAGE followed by western blot with 10048-2-Ig (RB1 antibody) at dilution of 1:10000 incubated at room temperature for 1.5 hours.



IP result of anti-RB1 (IP:10048-2-Ig, 3ug; Detection:10048-2-Ig 1:500) with A431 cells lysate 3000 ug.