

Nur für Forschungszwecke

SNAPIN Polyklonaler Antikörper

Katalog-Nr.: 10055-1-AP

13 Publikationen



Allgemeine Informationen

Katalog-Nr.:
10055-1-AP

Größe:
150ul, Konzentration: 400 µg/ml von
Nanodrop und 353 µg/ml durch die
Bradford-Methode mit BSA als
Standard;

Wirt:
Kaninchen

Isotyp:
IgG

Immunogen Katalognummer:
AG0101

GenBank-Zugangsnummer:
BC000761

GeneID (NCBI):
23557

Vollständiger Name:
SNAP-associated protein

Berechnete Masse:
15 kDa

Beobachtete Masse:
15-18 kDa

Reinigungsmethode:

Antigen-Affinitätsreinigung

Empfohlene Verdünnungen:

WB 1:200-1:1000
IP 0.5-4.0 µg für IP und 1:200-1:1000
für WB
IHC 1:50-1:500
IF 1:20-1:200

Anwendungen

Geprüfte Anwendungen:

FC, IF, IHC, IP, WB, ELISA

In Publikationen genannte Anwendungen:

IF, IHC, WB

Getestete Reaktivität:

Human, Maus, Ratte

Zitierte Arten:

Human, Maus

**Hinweis-IHC: Antigendemaskierung mit TE-
Puffer pH 9,0 empfohlen. (*) Wahlweise
kann die Antigendemaskierung auch mit
Citratpuffer pH 6,0 erfolgen.**

Positivkontrollen:

WB: A375-Zellen, HEK-293-Zellen, Rattenhirngewebe

IP: Maushirngewebe,

IHC: humanes Hodengewebe, humanes Hirngewebe

IF: HepG2-Zellen,

Hintergrundinformationen

Snapin, a protein of relative molecular weight of 15kd, is implicated in neurotransmission by binding to SNAP-25. Snapin was enriched in neurons and exclusively located on synaptic vesicle membrane, which may be a PKA target for modulating transmitter release through the cAMP-dependent signal-transduction pathway. This antibody can recognize the 15-18kd(Monomer) and 30-36kd(Dimer) forms of SNAPIN.

Bemerkenswerte Veröffentlichungen

Verfasser	Pubmed ID	Journal	Anwendung
Przemyslaw A Filipek	28993467	J Cell Biol	WB
Kelsey Michelle Wells	35587649	Elife	WB
Mengxue Jiang	34194388	Front Endocrinol (Lausanne)	WB, IHC, IF

Lagerung

Lagerungsbedingungen:

Bei -20°C lagern. Nach dem Versand ein Jahr lang stabil

Lagerungspuffer:

PBS mit 0.02% Natriumazid und 50% Glycerin pH 7.3.

Aliquotieren ist nicht notwendig bei -20°C Lagerung

*** 20ul-Größen enthalten 0.1% BSA

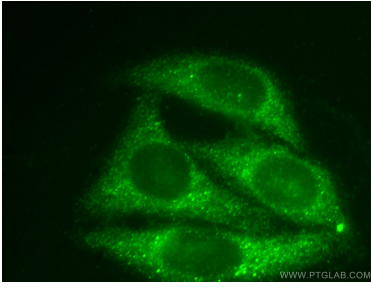
For technical support and original validation data for this product please contact:

T: 1 (888) 4PTGLAB (1-888-478-4522) (toll free
in USA), or 1(312) 455-8498 (outside USA)

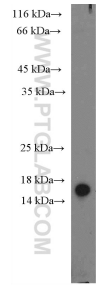
E: proteintech@ptglab.com
W: ptglab.com

This product is exclusively available under Proteintech Group brand and is not available to purchase from any other manufacturer.

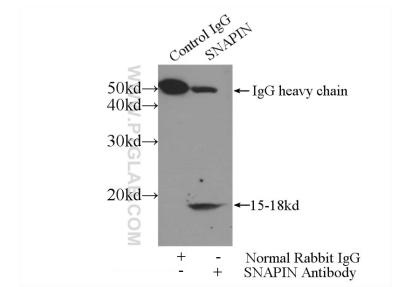
Ausgewählte Validierungsdaten



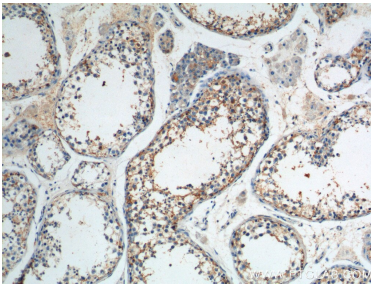
Immunofluorescent analysis of HepG2 cells, using SNAPIN antibody 10055-1-AP at 1:50 dilution and FITC-labeled donkey anti-rabbit IgG (green).



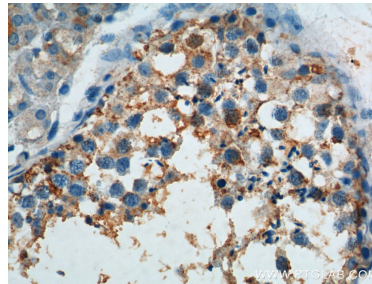
A375 cells were subjected to SDS PAGE followed by western blot with 10055-1-AP (SNAPIN Antibody) at dilution of 1:300 incubated at room temperature for 1.5 hours.



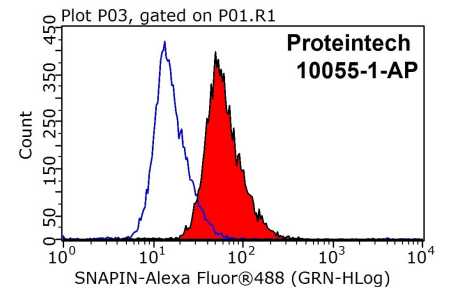
IP Result of anti-SNAPIN (IP:10055-1-AP, 5ug; Detection:10055-1-AP 1:300) with mouse brain tissue lysate 4000ug.



Immunohistochemical analysis of paraffin-embedded human testis tissue slide using 10055-1-AP (SNAPIN Antibody) at dilution of 1:200 (under 10x lens).



Immunohistochemical analysis of paraffin-embedded human testis tissue slide using 10055-1-AP (SNAPIN Antibody) at dilution of 1:200 (under 40x lens).



1×10^6 HepG2 cells were stained with 0.2ug SNAPIN antibody (10055-1-AP, red) and control antibody (blue). Fixed with 90% MeOH blocked with 3% BSA (30 min). Alexa Fluor 488-conjugated AffiniPure Goat Anti-Rabbit IgG(H+L) with dilution 1:1000.