

## Allgemeine Informationen

**Katalog-Nr.:**  
10056-1-AP

**Größe:**  
150ul , Konzentration: 1000 µg/ml von 4208  
Nanodrop und 467 µg/ml durch die  
Bradford-Methode mit BSA als  
Standard;

**Wirt:**  
Kaninchen

**Isotyp:**  
IgG

**Immunogen Katalognummer:**  
AG0020

**GenBank-Zugangsnummer:**  
BC156603

**GeneID (NCBI):**

**Vollständiger Name:**  
myocyte enhancer factor 2C

**Berechnete Masse:**  
51 kDa

**Beobachtete Masse:**  
52 kDa, 60 kDa

**Reinigungsmethode:**

Antigen-Affinitätsreinigung

**Empfohlene Verdünnungen:**

WB 1:500-1:1000  
IP 0.5-4.0 µg für IP und 1:500-1:1000  
für WB  
IHC 1:20-1:200  
IF 1:20-1:200

## Anwendungen

**Geprüfte Anwendungen:**

IF, IHC, IP, WB, ELISA

**In Publikationen genannte Anwendungen:**

chIP, IF, IHC, WB

**Getestete Reaktivität:**

Human, Maus, Ratte

**Zitierte Arten:**

Hausschwein, Human, Maus, Ratte, Rind

**Hinweis-IHC: Antigendemaskierung mit TE-Puffer pH 9,0 empfohlen. (\*) Wahlweise kann die Antigendemaskierung auch mit Citratpuffer pH 6,0 erfolgen.**

**Positivkontrollen:**

**WB:** SH-SY5Y-Zellen, Maus-Kolontgewebe

**IP:** SH-SY5Y-Zellen,

**IHC:** humanes Lymphomgewebe,

**IF:** HepG2-Zellen,

## Hintergrundinformationen

MEF2C belongs to the MEF2 family. It is a transcription activator which binds specifically to the MEF2 element present in the regulatory regions of many muscle-specific genes. MEF2C controls cardiac morphogenesis and myogenesis, and is also involved in vascular development[PMID: 20221419]. It plays an essential role in hippocampal-dependent learning and memory by suppressing the number of excitatory synapses and thus regulating basal and evoked synaptic transmission[PMID:18599438]. It is crucial for normal neuronal development, distribution, and electrical activity in the neocortex and is necessary for proper development of megakaryocytes and platelets and for bone marrow B lymphopoiesis[PMID: 21666133]. This protein is required for B-cell survival and proliferation in response to BCR stimulation, efficient IgG1 antibody responses to T-cell-dependent antigens and for normal induction of germinal center B cells. It may also be involved in neurogenesis and in the development of cortical architecture. MEF2C exists some isoforms with MV 50-52 kDa, 47 kDa, and 45 kDa, but modified MEF2C is about 55-60 kDa.

## Bemerkenswerte Veröffentlichungen

Verfasser	Pubmed ID	Journal	Anwendung
Adrian Fischer	27901111	Sci Rep	WB
Jae-Yeol Joo	26595656	Nat Neurosci	WB
Shichun Tu	29133852	Nat Commun	WB

## Lagerung

**Lagerungsbedingungen:**

Bei -20°C lagern. Nach dem Versand ein Jahr lang stabil

**Lagerungspuffer:**

PBS mit 0.02% Natriumazid und 50% Glycerin pH 7.3.

Aliquotieren ist nicht notwendig bei -20°C Lagerung

**\*\*\* 20ul-Größen enthalten 0.1% BSA**

For technical support and original validation data for this product please contact:

T: 1 (888) 4PTGLAB (1-888-478-4522) (toll free in USA), or 1(312) 455-8498 (outside USA)

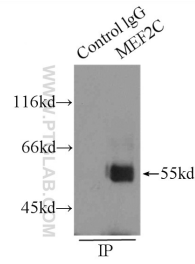
E: [proteintech@ptglab.com](mailto:proteintech@ptglab.com)  
W: [ptglab.com](http://ptglab.com)

**This product is exclusively available under Proteintech Group brand and is not available to purchase from any other manufacturer.**

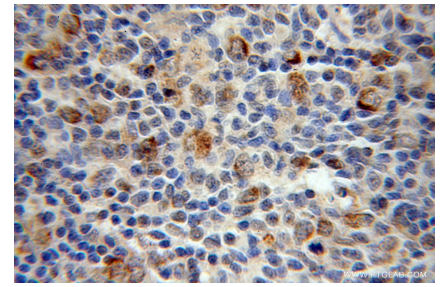
## Ausgewählte Validierungsdaten



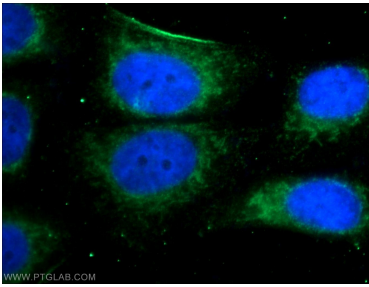
SH-SY5Y cells were subjected to SDS PAGE followed by western blot with 10056-1-AP (MEF2C antibody) at dilution of 1:500 incubated at room temperature for 1.5 hours.



IP Result of anti-MEF2C (IP:10056-1-AP, 3ug; Detection:10056-1-AP 1:500) with SH-SY5Y cells lysate 2000ug.



Immunohistochemical analysis of paraffin-embedded human lymphoma using 10056-1-AP (MEF2C antibody) at dilution of 1:50 (under 40x lens).



Immunofluorescent analysis of HepG2 cells using 10056-1-AP (MEF2C antibody) at dilution of 1:50 and Alexa Fluor 488-conjugated AffiniPure Goat Anti-Rabbit IgG(H+L).