

Allgemeine Informationen

| | | |
|---|---|--|
| Katalog-Nr.: 10068-1-AP | GenBank-Zugangsnummer: BC000748 | Reinigungsmethode: Antigen-Affinitätsreinigung |
| Größe: 150ul , Konzentration: 400 µg/ml von Nanodrop; | GeneID (NCBI): 10381 | Empfohlene Verdünnungen: WB 1:500-1:2000 IP 0.5-4.0 ug für IP und 1:2000-1:10000 für WB |
| Wirt: Kaninchen | Vollständiger Name: tubulin, beta 3 | IHC 1:20-1:200 IF 1:200-1:800 |
| Isotyp: IgG | Berechnete Masse: 450 aa, 50 kDa | |
| Immunogen Katalognummer: AG0117 | Beobachtete Masse: 50-55 kDa | |

Anwendungen

Geprüfte Anwendungen:

FC, IF, IHC, IP, WB, ELISA

In Publikationen genannte Anwendungen:

IF, IHC, IP, WB

Getestete Reaktivität:

Human, Maus, Ratte

Zitierte Arten:

Caenorhabditis Elegans, Hausschwein, Human, Hund, Maus, Ratte, Rind, Zebrafisch, Seidenraupe

Hinweis-IHC: Antigenmaskierung mit TE-Puffer pH 9,0 empfohlen. (*) Wahlweise kann die Antigenmaskierung auch mit Citratpuffer pH 6,0 erfolgen.

Positivkontrollen:

WB : Maus-Cerebellum-Gewebe, A431-Zellen, HEK-293-Zellen, HeLa-Zellen, HepG2-Zellen, Jurkat-Zellen, Maushirngewebe, NIH/3T3-Zellen, Rattenhirngewebe

IP : HEK-293-Zellen,

IHC : Maushirngewebe, humanes Hirngewebe, Rattenhirngewebe

IF : C2C12-Zellen, HepG2-Zellen

Hintergrundinformationen

There are five tubulins in human cells: alpha, beta, gamma, delta, and epsilon. Tubulins are conserved across species. They form heterodimers, which multimerize to form a microtubule filament. An alpha and beta tubulin heterodimer is the basic structural unit of microtubules. The heterodimer does not come apart, once formed. The alpha and beta tubulins, which are each about 55 kDa MW, are homologous but not identical. Alpha, beta, and gamma tubulins have all been used as loading controls. Tubulin expression may vary according to resistance to antimicrobial and antimetabolic drugs.

Bemerkenswerte Veröffentlichungen

| Verfasser | Pubmed ID | Journal | Anwendung |
|--------------|-----------|----------------------------|-----------|
| Xiaodong Lan | 26417862 | Microsc Microanal | WB |
| Zhongming Li | 36164968 | Clin Exp Pharmacol Physiol | WB |
| YanHua Fan | 36174847 | Fitoterapia | WB |

Lagerung

Lagerungsbedingungen:

Bei -20°C lagern. Nach dem Versand ein Jahr lang stabil

Lagerungspuffer:

PBS mit 0.02% Natriumazid und 50% Glycerin pH 7.3.

Aliquotieren ist nicht notwendig bei -20°C Lagerung

***** 20ul-Größen enthalten 0.1% BSA**

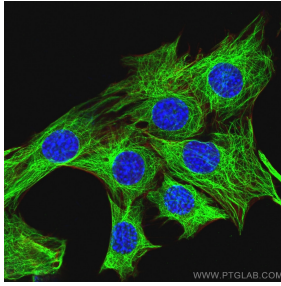
For technical support and original validation data for this product please contact:

T: 1 (888) 4PTGLAB (1-888-478-4522) (toll free in USA), or 1(312) 455-8498 (outside USA)

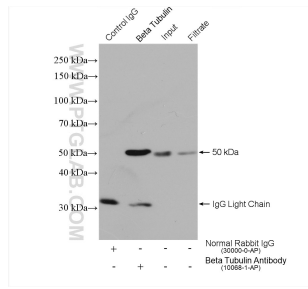
E: proteintech@ptglab.com
W: ptglab.com

This product is exclusively available under Proteintech Group brand and is not available to purchase from any other manufacturer.

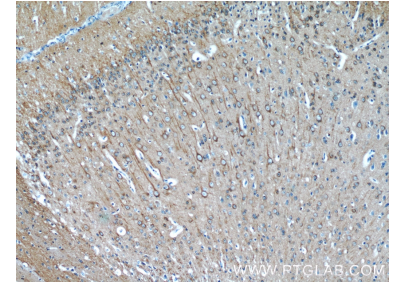
Ausgewählte Validierungsdaten



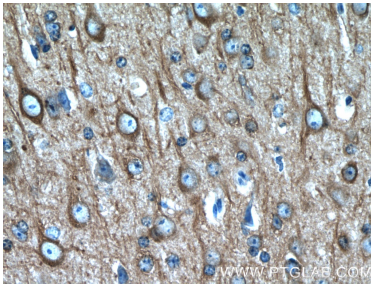
Immunofluorescent analysis of (4% PFA) fixed C2C12 cells using Beta Tubulin antibody (10068-1-AP) at dilution of 1:400 and CoraLite®488-Conjugated AffiniPure Goat Anti-Rabbit IgG(H+L), CL594-Phalloidin (red).



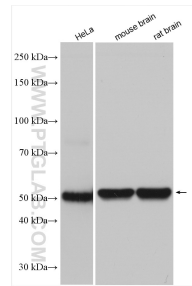
IP result of anti-beta Tubulin (IP:10068-1-AP, 4ug; Detection:10068-1-AP 1:5000) with HEK-293 cells lysate 2320 ug.



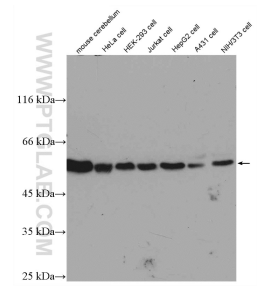
Immunohistochemical analysis of paraffin-embedded mouse brain tissue slide using 10068-1-AP (beta Tubulin antibody at dilution of 1:50 (under 10x lens).



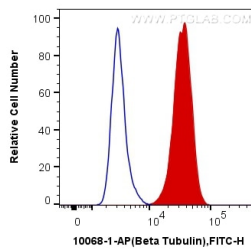
Immunohistochemical analysis of paraffin-embedded mouse brain tissue slide using 10068-1-AP (beta Tubulin antibody at dilution of 1:50 (under 40x lens).



Various lysates were subjected to SDS PAGE followed by western blot with 10068-1-AP (Beta Tubulin antibody) at dilution of 1:8000 incubated at room temperature for 1.5 hours.



Various lysates were subjected to SDS PAGE followed by western blot with 10068-1-AP (beta Tubulin antibody) at dilution of 1:1000 incubated at room temperature for 1.5 hours.



1X10⁶ HeLa cells were intracellularly stained with 0.4 ug Anti-Human Beta Tubulin (10068-1-AP) and CoraLite®488-Conjugated AffiniPure Goat Anti-Rabbit IgG(H+L) at dilution 1:1000 (red), or 0.4 ug Control Antibody. Cells were fixed with 4% PFA and permeabilized with Flow Cytometry Perm Buffer (PF00011-C).