

Allgemeine Informationen

Katalog-Nr.: 10078-2-AP	GenBank-Zugangsnummer: BC000481	Reinigungsmethode: Antigen-Affinitätsreinigung
Größe: 150ul, Konzentration: 300 µg/ml von Nanodrop und 140 µg/ml durch die Bradford-Methode mit BSA als Standard;	GeneID (NCBI): 5315	Empfohlene Verdünnungen: WB 1:1000-1:4000 IHC 1:250-1:1000 IF 1:200-1:800
Wirt: Kaninchen	Vollständiger Name: PKM pyruvate kinase, muscle	
Isotyp: IgG	Berechnete Masse: 58 kDa	
Immunogen Katalognummer: AG0110	Beobachtete Masse: 58 kDa	

Anwendungen

Geprüfte Anwendungen:

IF, IHC, WB, ELISA

In Publikationen genannte Anwendungen:

IF, IHC, WB

Getestete Reaktivität:

Human, Maus, Ratte

Zitierte Arten:

Hausschwein, Human, Maus, Ratte

Hinweis-IHC: Antigendemaskierung mit TE-Puffer pH 9,0 empfohlen. (*) Wahlweise kann die Antigendemaskierung auch mit Citratpuffer pH 6,0 erfolgen.

Positivkontrollen:

WB: HeLa-Zellen, HEK-293-Zellen, HepG2-Zellen, Jurkat-Zellen, Mausherzgewebe, Maushirngewebe, Mausmuskulgewebe, MCF-7-Zellen, Multizellen/-gewebe, NIH/3T3-Zellen, Raji-Zellen, Ratten-Skelettmuskulgewebe, SH-SY5Y-Zellen, SKOV-3-Zellen

IHC: humanes Kolonkarzinomgewebe,

IF: HeLa-Zellen,

Hintergrundinformationen

PKM, also named as OIP3, PK2, PK3, PKM1/2, p58, THBP1, CTHBP and Tumor M2-PK, belongs to the pyruvate kinase family. It is glycolytic enzyme that catalyzes the transfer of a phosphoryl group from phosphoenolpyruvate (PEP) to ADP, generating ATP. It stimulates POU5F1-mediated transcriptional activation. PKM plays a general role in caspase independent cell death of tumor cells. PKM has 2 isoforms named as PKM1/M2. The activity of the M2 isoform can be inhibited by tyrosine kinase signalling in tumourcells. The primary pyruvate kinase isoform before tumour development is PKM1; however, the primary isoform from four independent tumours is PKM2.(PMID:18337823). This antibody can recognize both PKM1 and PKM2.

Bemerkenswerte Veröffentlichungen

Verfasser	Pubmed ID	Journal	Anwendung
Li-Jun Wen	34956471	Am J Transl Res	WB,IHC
Liangliang Fu	28345649	Sci Rep	WB
Yang Yang	31211620	Am J Physiol Endocrinol Metab	WB

Lagerung

Lagerungsbedingungen:

Bei -20°C lagern. Nach dem Versand ein Jahr lang stabil

Lagerungspuffer:

PBS mit 0.02% Natriumazid und 50% Glycerin pH 7.3.

Aliquotieren ist nicht notwendig bei -20°C Lagerung

***** 20ul-Größen enthalten 0.1% BSA**

For technical support and original validation data for this product please contact:

T: 1 (888) 4PTGLAB (1-888-478-4522) (toll free in USA), or 1(312) 455-8498 (outside USA)

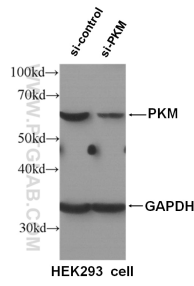
E: proteintech@ptglab.com
 W: ptglab.com

This product is exclusively available under Proteintech Group brand and is not available to purchase from any other manufacturer.

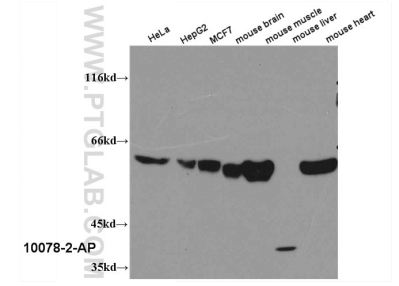
Ausgewählte Validierungsdaten



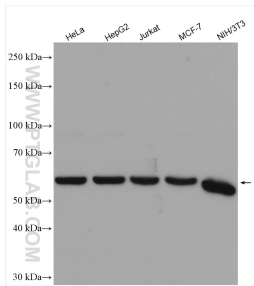
Immunohistochemical analysis of paraffin-embedded human colon cancer tissue slide using 10078-2-AP (PKM antibody) at dilution of 1:500 (under 10x lens). Heat mediated antigen retrieval with Tris-EDTA buffer (pH 9.0).



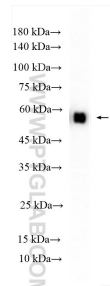
WB result of PKM antibody (10078-2-AP, 1:1000) with si-Control and si-PKM transfected HEK293 cells.



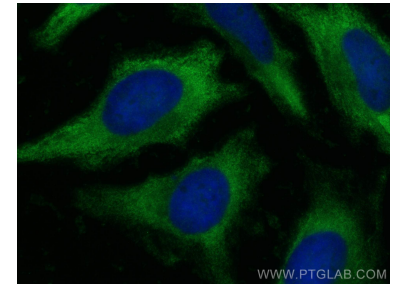
WB result of 10078-2-AP (PKM antibody) with various lysates.



Various lysates were subjected to SDS PAGE followed by western blot with 10078-2-AP (PKM antibody) at dilution of 1:2000 incubated at room temperature for 1.5 hours.



rat skeletal muscle tissue were subjected to SDS PAGE followed by western blot with 10078-2-AP (PKM antibody) at dilution of 1:2000 incubated at room temperature for 1.5 hours.



Immunofluorescent analysis of (-20°C Ethanol) fixed HeLa cells using PKM antibody (10078-2-AP) at dilution of 1:400 and CoraLite®488-Conjugated AffiniPure Goat Anti-Rabbit IgG(H+L).