

Nur für Forschungszwecke

# GTF2F1 Polyklonaler Antikörper

Katalog-Nr.: 10093-2-AP

1 Publikationen



## Allgemeine Informationen

Katalog-Nr.:  
10093-2-AP

Größe:  
150ul, Konzentration: 600 µg/ml von  
Nanodrop und 280 µg/ml durch die  
Bradford-Methode mit BSA als  
Standard;

Wirt:  
Kaninchen

Isotyp:  
IgG

Immunogen Katalognummer:  
AG0133

GenBank-Zugangsnummer:  
BC000120

GeneID (NCBI):  
2962

Vollständiger Name:  
general transcription factor IIF,  
polypeptide 1, 74kDa

Berechnete Masse:  
58 kDa

Beobachtete Masse:  
74 kDa

Reinigungsmethode:

Antigen-Affinitätsreinigung

Empfohlene Verdünnungen:

WB 1:500-1:2000  
IP 0.5-4.0 µg für IP und 1:200-1:1000  
für WB

## Anwendungen

Geprüfte Anwendungen:

IP, WB, ELISA

In Publikationen genannte Anwendungen:

WB

Getestete Reaktivität:

Human, Maus, Ratte

Zitierte Arten:

Human

Positivkontrollen:

WB : K-562-Zellen,

IP : K-562-Zellen,

## Hintergrundinformationen

In eukaryotic systems, the initiation of gene transcription involves the ordered assembly of a multiprotein complex on proximal promoter elements, consisting of RNA polymerase II and broad families of auxiliary transcription factors. Such factors can be divided into two major functional classes: the basal factors that are required for transcription of all Pol II genes, including TFIIA, B, D, E, F and H; and sequence specific factors that regulate gene expression. The basal transcription factors and Pol II form a specific multiprotein complex near the transcription start site by interacting with core promoter elements such as the TATA box generally located 25-30 base pairs upstream of the transcription start site. TFIIF, a heteromer composed of a small (RAP 30) and a large (RAP 74) subunit, acting at an intermediate stage in initiation complex formation, binds directly to RNA polymerase II in solution and decrease the affinity of RNA polymerase II for nonspecific DNA. In addition, TFIIF stimulates transcription elongation by RNA polymerase II.

## Bemerkenswerte Veröffentlichungen

Verfasser

Xinxin Wang

Pubmed ID

35476980

Journal

Cell Rep

Anwendung

WB

## Lagerung

Lagerungsbedingungen:

Bei -20°C lagern. Nach dem Versand ein Jahr lang stabil

Lagerungspuffer:

PBS mit 0.02% Natriumazid und 50% Glycerin pH 7.3.

Aliquotieren ist nicht notwendig bei -20°C Lagerung

\*\*\* 20ul-Größen enthalten 0.1% BSA

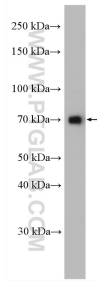
For technical support and original validation data for this product please contact:

T: 1 (888) 4PTGLAB (1-888-478-4522) (toll free  
in USA), or 1(312) 455-8498 (outside USA)

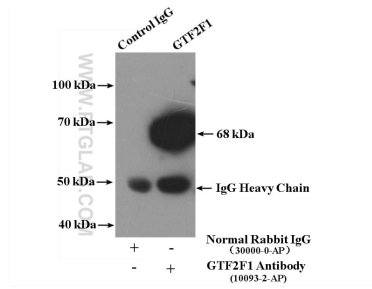
E: proteintech@ptglab.com  
W: ptglab.com

This product is exclusively available under Proteintech Group brand and is not available to purchase from any other manufacturer.

## Ausgewählte Validierungsdaten



K-562 cells were subjected to SDS PAGE followed by western blot with 10093-2-AP (GTF2F1 antibody) at dilution of 1:1000 incubated at room temperature for 1.5 hours.



IP Result of anti-GTF2F1 (IP:10093-2-AP, 4ug; Detection:10093-2-AP 1:300) with K-562 cells lysate 4000ug.