

Nur für Forschungszwecke

PRC1 Polyklonaler Antikörper

Katalog-Nr.: 10110-2-AP

Vorgestelltes Produkt



Allgemeine Informationen

Katalog-Nr.: 10110-2-AP	GenBank-Zugangsnummer: BC005140	Reinigungsmethode: Antigen-Affinitätsreinigung
Größe: 150ul, Konzentration: 600 µg/ml von Nanodrop und 300 µg/ml durch die Bradford-Methode mit BSA als Standard;	GeneID (NCBI): 9055	Empfohlene Verdünnungen: WB 1:2000-1:12000 IHC 1:50-1:500
Wirt: Kaninchen	Vollständiger Name: protein regulator of cytokinesis 1	
Isotyp: IgG	Berechnete Masse: 67 kDa	
Immunogen Katalognummer: AG0163	Beobachtete Masse: 67 kDa	

Anwendungen

Geprüfte Anwendungen: IHC, WB, ELISA	Positivkontrollen: WB : MCF-7-Zellen, HEK-293-Zellen, HeLa-Zellen, HepG2-Zellen IHC : humanes Kolonkarzinomgewebe,
Getestete Reaktivität: Human, Maus, Ratte	
Hinweis-IHC: Antigenmaskierung mit TE-Puffer pH 9,0 empfohlen. (*) Wahlweise kann die Antigenmaskierung auch mit Citratpuffer pH 6,0 erfolgen.	

Hintergrundinformationen

PRC1 is involved in cytokinesis. PRC1 is at high level during S and G2/M and drop dramatically after cell exit mitosis and enter G1. PRC1 is located in the nucleus during interphase, and becomes associated with mitotic spindles in a highly dynamic manner during mitosis, and localizes to the cell mid-body during cytokinesis. PRC1 is a good substrate for several cyclin-dependent kinases (CDKs) in vitro and is phosphorylated in vivo at sites that are phosphorylated by CDK in vitro, suggesting that PRC1 is an in vivo CDK substrate.

Lagerung

Lagerungsbedingungen:
Bei -20°C lagern. Nach dem Versand ein Jahr lang stabil
Lagerungspuffer:
PBS mit 0.02% Natriumazid und 50% Glycerin pH 7.3.
Aliquotieren ist nicht notwendig bei -20°C Lagerung

*** 20ul-Größen enthalten 0.1% BSA

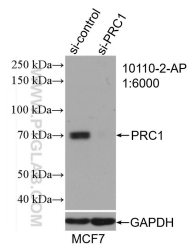
For technical support and original validation data for this product please contact:

T: 1 (888) 4PTGLAB (1-888-478-4522) (toll free in USA), or 1(312) 455-8498 (outside USA)

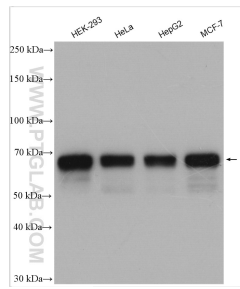
E: proteintech@ptglab.com
W: ptglab.com

This product is exclusively available under Proteintech Group brand and is not available to purchase from any other manufacturer.

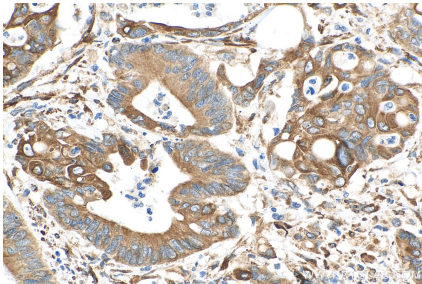
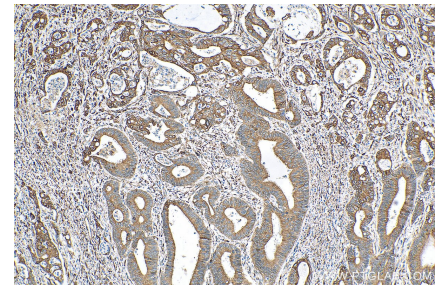
Ausgewählte Validierungsdaten



WB result of PRC1 antibody (10110-2-AP; 1:6000; incubated at room temperature for 1.5 hours) with sh-Control and sh-PRC1 transfected MCF-7 cells.



Various lysates were subjected to SDS PAGE followed by western blot with 10110-2-AP (PRC1 antibody) at dilution of 1:10000 incubated at room temperature for 1.5 hours.



Immunohistochemical analysis of paraffin-embedded human colon cancer tissue slide using 10110-2-AP (PRC1 antibody) at dilution of 1:200 (under 40x lens). Heat mediated antigen retrieval with Tris-EDTA buffer (pH 9.0).