

## Allgemeine Informationen

<b>Katalog-Nr.:</b> 10121-2-AP	<b>GenBank-Zugangsnummer:</b> BC003097	<b>Reinigungsmethode:</b> Antigen-Affinitätsreinigung
<b>Größe:</b> 150ul , Konzentration: 250 µg/ml von Nanodrop und 247 µg/ml durch die Bradford-Methode mit BSA als Standard;	<b>GeneID (NCBI):</b> 3384	<b>Empfohlene Verdünnungen:</b> WB 1:500-1:1000 IHC 1:50-1:500
<b>Wirt:</b> Kaninchen	<b>Vollständiger Name:</b> intercellular adhesion molecule 2	
<b>Isotyp:</b> IgG	<b>Berechnete Masse:</b> 31 kDa	
<b>Immunogen Katalognummer:</b> AG0165	<b>Beobachtete Masse:</b> 55-80 kDa	

## Anwendungen

<b>Geprüfte Anwendungen:</b> IHC, WB,ELISA	<b>Positivkontrollen:</b> WB : Jurkat-Zellen, HEK-293-Zellen, Maushirngewebe, RAW 264.7-Zellen IHC : humanes Mammakarzinomgewebe, humanes Lungenkarzinomgewebe
<b>In Publikationen genannte Anwendungen:</b> IHC, WB	
<b>Getestete Reaktivität:</b> Human, Maus, Ratte	
<b>Zitierte Arten:</b> Human, Maus	
<b>Hinweis-IHC: Antigendemaskierung mit TE-Puffer pH 9,0 empfohlen. (*) Wahlweise kann die Antigendemaskierung auch mit Citratpuffer pH 6,0 erfolgen.</b>	

## Hintergrundinformationen

ICAM2 is a cell adhesion protein having important roles in cell migration, especially during inflammation when leukocytes cross the endothelium. Initially described as a receptor for lymphocyte function-associated antigen-1 (LFA1), ICAM2 may play a role in lymphocyte recirculation by blocking LFA-1-dependent cell adhesion. It mediates adhesive interactions important for antigen-specific immune response, NK-cell mediated clearance, lymphocyte recirculation, and other cellular interactions important for immune response and surveillance. ICAM2 has six N-linked glycosylation sites at amino acids (asparagines) 47, 82, 105, 153, 178 and 187. This antibody got 55-80 kDa in western blotting maybe due to glycosylation.

## Bemerkenswerte Veröffentlichungen

Verfasser	Pubmed ID	Journal	Anwendung
Yoon Karina Jin KJ	18978946	PLoS One	WB,IHC
Yu Dong	24457076	Hum Pathol	IHC
Xinxin Xu	35907907	J Ovarian Res	IHC

## Lagerung

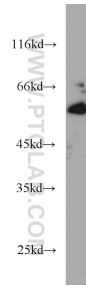
**Lagerungsbedingungen:**  
Bei -20°C lagern. Nach dem Versand ein Jahr lang stabil  
**Lagerungspuffer:**  
PBS mit 0.02% Natriumazid und 50% Glycerin pH 7.3.  
Aliquotieren ist nicht notwendig bei -20°C Lagerung

\*\*\* 20ul-Größen enthalten 0.1% BSA

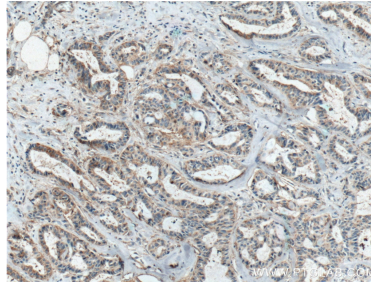
For technical support and original validation data for this product please contact:  
T: 1 (888) 4PTGLAB (1-888-478-4522) (toll free in USA), or 1(312) 455-8498 (outside USA)  
E: [proteintech@ptglab.com](mailto:proteintech@ptglab.com)  
W: [ptglab.com](http://ptglab.com)

This product is exclusively available under Proteintech Group brand and is not available to purchase from any other manufacturer.

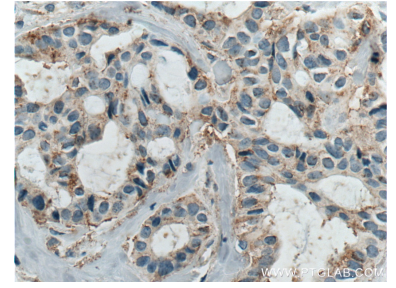
## Ausgewählte Validierungsdaten



Jurkat cells were subjected to SDS PAGE followed by western blot with 10121-2-AP (ICAM2 antibody) at dilution of 1:500 incubated at room temperature for 1.5 hours.



Immunohistochemical analysis of paraffin-embedded human breast cancer tissue slide using 10121-2-AP (ICAM2 antibody) at dilution of 1:200 (under 10x lens. Heat mediated antigen retrieval with Tris-EDTA buffer (pH 9.0).



Immunohistochemical analysis of paraffin-embedded human breast cancer tissue slide using 10121-2-AP (ICAM2 antibody) at dilution of 1:200 (under 40x lens. Heat mediated antigen retrieval with Tris-EDTA buffer (pH 9.0).