

Nur für Forschungszwecke

PPP1CB-Specific Polyklonaler Antikörper



Katalog-Nr.: 10140-2-AP

3 Publikationen

Allgemeine Informationen

Katalog-Nr.:
10140-2-AP

Größe:
150ul, Konzentration: 750 µg/ml von Nanodrop und 333 µg/ml durch die Bradford-Methode mit BSA als Standard;

Wirt:
Kaninchen

Isotyp:
IgG

Immunogen Katalognummer:
AG0183

GenBank-Zugangsnummer:
BC002697

GeneID (NCBI):
5500

Vollständiger Name:
protein phosphatase 1, catalytic subunit, beta isoform

Berechnete Masse:
37 kDa

Beobachtete Masse:
37 kDa

Reinigungsmethode:
Antigen-Affinitätsreinigung

Empfohlene Verdünnungen:
WB 1:500-1:2000
IP 0.5-4.0 µg für IP und 1:500-1:2000 für WB
IHC 1:20-1:200
IF 1:20-1:200

Anwendungen

Geprüfte Anwendungen:
IF, IHC, IP, WB, ELISA

In Publikationen genannte Anwendungen:
IHC, IP, WB

Getestete Reaktivität:
Human, Maus, Ratte

Zitierte Arten:
Human, Ratte

Hinweis-IHC: Antigenmaskierung mit TE-Puffer pH 9,0 empfohlen. (*) Wahlweise kann die Antigenmaskierung auch mit Citratpuffer pH 6,0 erfolgen.

Positivkontrollen:

WB: humanes Hirngewebe, NIH/3T3

IP: Maushirngewebe,

IHC: humanes Prostatakarzinomgewebe,

IF: NIH/3T3-Zellen,

Hintergrundinformationen

Protein phosphatase 1 (PP1) is the main eukaryotic protein serine/threonine phosphatase that regulates an enormous variety of cellular processes including protein-protein interactions, gene transcription, cell-cycle progression and apoptosis. It is a trimeric complex composed of a regulatory subunit, a variable subunit and a catalytic subunit. The catalytic subunit of PP1 (PP1c) can interact with amount of regulatory subunits in vivo that target it to particular subcellular locations and regulate its activity towards specific substrates. PPP1CB migrated as a 37kd protein on SDS page. This antibody is specific to PPP1CB.

Bemerkenswerte Veröffentlichungen

Verfasser	Pubmed ID	Journal	Anwendung
Ru-Jia Liao	25224648	Clin Exp Pharmacol Physiol	WB, IP
Chao Huang	24196533	Am J Physiol Cell Physiol	WB
Sun Daxin D	21566537	Melanoma Res	WB, IHC

Lagerung

Lagerungsbedingungen:

Bei -20°C lagern. Nach dem Versand ein Jahr lang stabil

Lagerungspuffer:

PBS mit 0.02% Natriumazid und 50% Glycerin pH 7.3.

Aliquotieren ist nicht notwendig bei -20°C Lagerung

*** 20ul-Größen enthalten 0.1% BSA

For technical support and original validation data for this product please contact:

T: 1 (888) 4PTGLAB (1-888-478-4522) (toll free in USA), or 1(312) 455-8498 (outside USA)

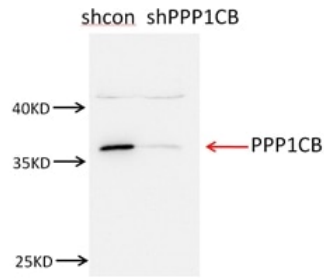
E: proteintech@ptglab.com
W: ptglab.com

This product is exclusively available under Proteintech Group brand and is not available to purchase from any other manufacturer.

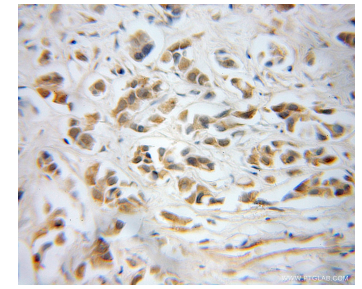
Ausgewählte Validierungsdaten



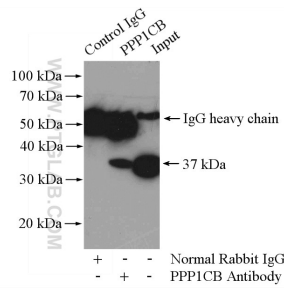
human brain tissue were subjected to SDS PAGE followed by western blot with 10140-2-AP (PPP1CB-Specific antibody) at dilution of 1:1500 incubated at room temperature for 1.5 hours.



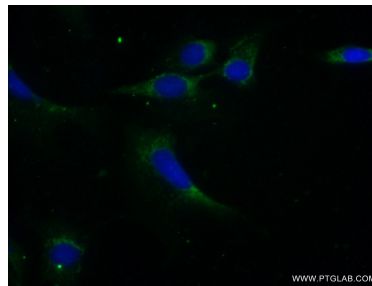
NIH3T3 cells were subjected to SDS PAGE followed by western blot with 10140-2-AP (PPP1CB-Specific antibody) at dilution of 1:1500.



Immunohistochemical analysis of paraffin-embedded human prostate cancer using 10140-2-AP (PPP1CB-Specific antibody) at dilution of 1:50 (under 40x lens).



IP Result of anti-PPP1CB-Specific (IP:10140-2-AP, 4ug; Detection:10140-2-AP 1:1000) with mouse brain tissue lysate 4000ug.



Immunofluorescent analysis of (-20°C Ethanol) fixed NIH/3T3 cells using 10140-2-AP (PPP1CB-Specific antibody) at dilution of 1:50 and Alexa Fluor 488-conjugated AffiniPure Goat Anti-Rabbit IgG(H+L).