

Nur für Forschungszwecke

STAT1 Polyklonaler Antikörper

Katalog-Nr.: 10144-2-AP

Vorgestelltes Produkt

91 Publikationen



Allgemeine Informationen

Katalog-Nr.:

10144-2-AP

Größe:

150ul, Konzentration: 700 µg/ml von Nanodrop;

Wirt:

Kaninchen

Isotyp:

IgG

Immunogen Katalognummer:

AG0199

GenBank-Zugangsnummer:

BC002704

GeneID (NCBI):

6772

Vollständiger Name:

signal transducer and activator of transcription 1, 91kDa

Berechnete Masse:

83 kDa

Beobachtete Masse:

84 kDa

Reinigungsmethode:

Antigen-Affinitätsreinigung

Empfohlene Verdünnungen:

WB 1:2000-1:10000

IP 0.5-4.0 µg für IP und 1:500-1:1000 für WB

IF 1:50-1:500

Anwendungen

Geprüfte Anwendungen:

FC, IF, IP, WB, ELISA

In Publikationen genannte Anwendungen:

ChIP, CoIP, IF, IHC, IP, WB

Getestete Reaktivität:

Human, Ratte

Zitierte Arten:

Human, Maus, Ratte

Positivkontrollen:

WB: A431-Zellen, A549-Zellen, HEK-293-Zellen, HepG2-Zellen, K-562-Zellen, Multizellen, PC-3-Zellen

IP: PC-3-Zellen,

IF: PC-3-Zellen,

Hintergrundinformationen

STAT1 (signal transducers and activators of transcription 1) is a member of the STAT protein family. In response to cytokines and growth factors, STAT family members are phosphorylated by the receptor associated kinases, and then form homo- or heterodimers that translocate to the cell nucleus where they act as transcription activators. Various ligands, including interferons- and -, EGF, PDGF and IL-6, can activate STAT1. STAT1 protein mediates the expression of a variety of genes, which is thought to be important for cell viability in response to different cell stimuli and pathogens. This antibody is a rabbit polyclonal antibody raised against residues near the N terminus of human STAT1.

Bemerkenswerte Veröffentlichungen

Verfasser	Pubmed ID	Journal	Anwendung
Xin Wen	36249018	Front Oncol	WB
Lin Deng	36170649	J Med Chem	WB
Bin Zhang	32964498	Neurochem Res	WB,IHC

Lagerung

Lagerungsbedingungen:

Bei -20°C lagern. Nach dem Versand ein Jahr lang stabil

Lagerungspuffer:

PBS mit 0.02% Natriumazid und 50% Glycerin pH 7.3.

Aliquotieren ist nicht notwendig bei -20°C Lagerung

*** 20ul-Größen enthalten 0.1% BSA

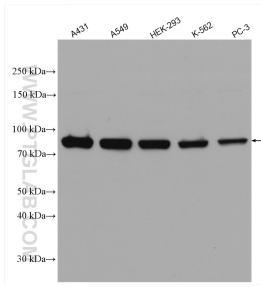
For technical support and original validation data for this product please contact:

T: 1 (888) 4PTGLAB (1-888-478-4522) (toll free in USA), or 1(312) 455-8498 (outside USA)

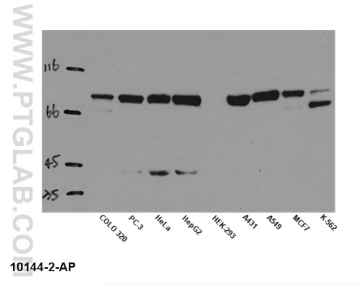
E: proteintech@ptglab.com
W: ptglab.com

This product is exclusively available under Proteintech Group brand and is not available to purchase from any other manufacturer.

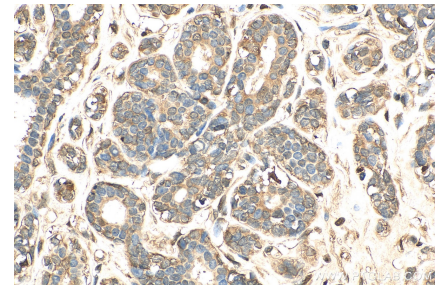
Ausgewählte Validierungsdaten



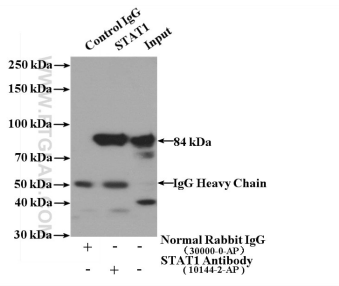
Various lysates were subjected to SDS PAGE followed by western blot with 10144-2-AP (STAT1 antibody) at dilution of 1:5000 incubated at room temperature for 1.5 hours.



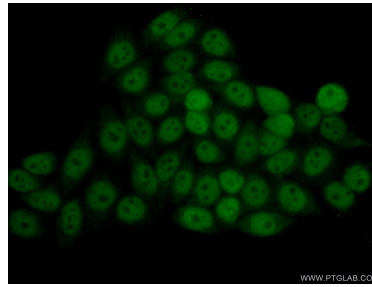
WB result of anti-STAT1 (10144-2-AP) in different cells lysates.



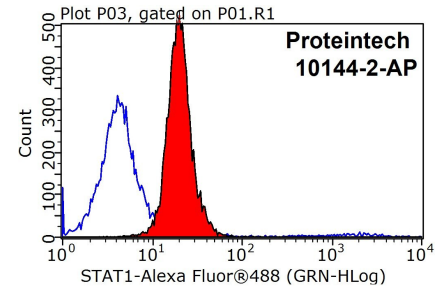
Immunohistochemical analysis of paraffin-embedded human breast cancer tissue slide using 10144-2-AP (STAT1 antibody) at dilution of 1:200 (under 40x lens). Heat mediated antigen retrieval with Tris-EDTA buffer (pH 9.0).



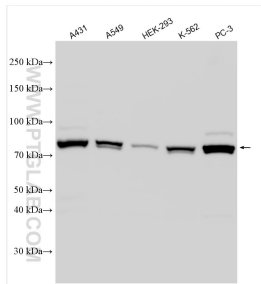
IP Result of anti-STAT1 (IP:10144-2-AP, 4ug; Detection:10144-2-AP 1:500) with PC-3 cells lysate 3200ug.



Immunofluorescent analysis of (10% Formaldehyde) fixed PC-3 cells using 10144-2-AP (STAT1 antibody) at dilution of 1:50 and Alexa Fluor 488-conjugated AffiniPure Goat Anti-Rabbit IgG(H+L).



1X10⁶ MCF-7 cells were stained with 0.2ug STAT1 antibody (10144-2-AP, red) and control antibody (blue). Fixed with 90% MeOH blocked with 3% BSA (30 min). Alexa Fluor 488-conjugated AffiniPure Goat Anti-Rabbit IgG(H+L) with dilution 1:1000.



Various lysates were subjected to SDS PAGE followed by western blot with 10144-2-AP (STAT1 antibody) at dilution of 1:10000 incubated at room temperature for 1.5 hours.