

Nur für Forschungszwecke

Cytokeratin 13 Polyklonaler Antikörper



Katalog-Nr.:10164-2-AP

12 Publikationen

Allgemeine Informationen

Katalog-Nr.: 10164-2-AP	GenBank-Zugangsnummer: BC002661	Reinigungsmethode: Antigen-Affinitätsreinigung
Größe: 150ul , Konzentration: 550 µg/ml von Nanodrop und 307 µg/ml durch die Bradford-Methode mit BSA als Standard;	GeneID (NCBI): 3860	Empfohlene Verdünnungen: WB 1:5000-1:10000 IP 0.5-4.0 ug für IP und 1:500-1:2000 für WB
Wirt: Kaninchen	Vollständiger Name: keratin 13	IHC 1:50-1:500 IF 1:200-1:800
Isotyp: IgG	Berechnete Masse: 50 kDa	
Immunogen Katalognummer: AG0217	Beobachtete Masse: 50 kDa	

Anwendungen

Geprüfte Anwendungen: FC, IF, IHC, IP, WB, ELISA	Positivkontrollen: WB : A431-Zellen, Maushautgewebe IP : A431-Zellen, IHC : humanes Zervixkarzinomgewebe, humanes Ösophagusgewebe IF : A431-Zellen,
In Publikationen genannte Anwendungen: IF, IHC, WB	
Getestete Reaktivität: Human, Maus	
Zitierte Arten: Human	

Hinweis-IHC: Antigendemaskierung mit TE-Puffer pH 9,0 empfohlen. (*) Wahlweise kann die Antigendemaskierung auch mit Citratpuffer pH 6,0 erfolgen.

Hintergrundinformationen

Keratin 13 is a member of the keratin family. The keratins are intermediate filament proteins responsible for the structural integrity of epithelial cells and are subdivided into cytokeratins and hair keratins. Most of the type I cytokeratins consist of acidic proteins which are arranged in pairs of heterotypic keratin chains. This type I cytokeratin is paired with keratin 4 and expressed in the suprabasal layers of non-cornified stratified epithelia. Mutations in keratin 13 gene and keratin 4 have been associated with the autosomal dominant disorder White Sponge Nevus. The type I cytokeratins are clustered in a region of chromosome 17q21.2.

Bemerkenswerte Veröffentlichungen

Verfasser	Pubmed ID	Journal	Anwendung
Cong Li	31885626	Stem Cells Int	IF
Jaworski C J C J	19956562	Mol Vis	IHC
Henna Pehkonen	30005669	Cell Commun Signal	WB

Lagerung

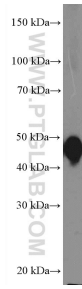
Lagerungsbedingungen:
Bei -20°C lagern. Nach dem Versand ein Jahr lang stabil
Lagerungspuffer:
PBS mit 0.02% Natriumazid und 50% Glycerin pH 7.3.
Aliquotieren ist nicht notwendig bei -20°C Lagerung

*** 20ul-Größen enthalten 0.1% BSA

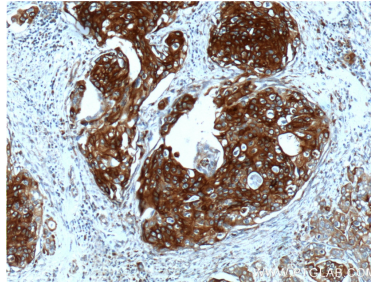
For technical support and original validation data for this product please contact:
T: 1 (888) 4PTGLAB (1-888-478-4522) (toll free in USA), or 1(312) 455-8498 (outside USA)
E: proteintech@ptglab.com
W: ptglab.com

This product is exclusively available under Proteintech Group brand and is not available to purchase from any other manufacturer.

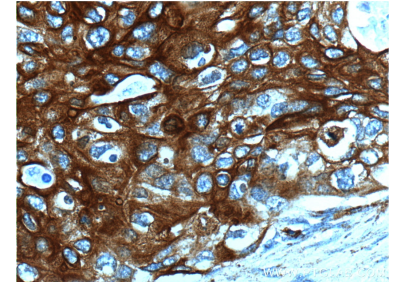
Ausgewählte Validierungsdaten



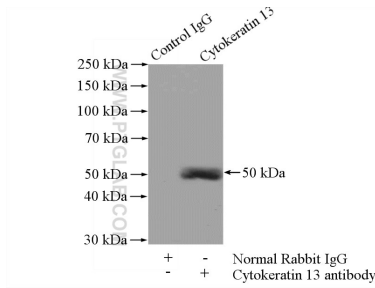
A431 cells were subjected to SDS PAGE followed by western blot with 10164-2-AP (Cytokeratin 13 antibody at dilution of 1:10000 incubated at room temperature for 1.5 hours.



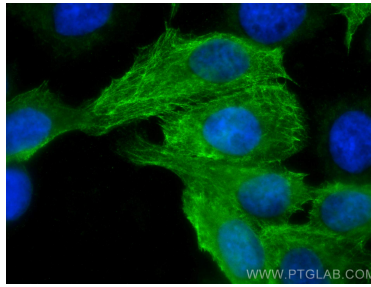
Immunohistochemical analysis of paraffin-embedded human cervical cancer tissue slide using 10164-2-AP (Cytokeratin 13 antibody at dilution of 1:200 (under 10x lens).



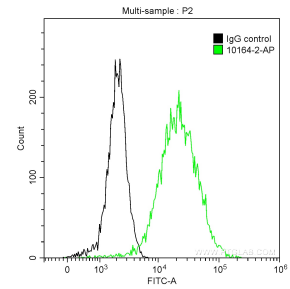
Immunohistochemical analysis of paraffin-embedded human cervical cancer tissue slide using 10164-2-AP (Cytokeratin 13 antibody at dilution of 1:200 (under 40x lens).



IP Result of anti-Cytokeratin 13 (IP:10164-2-AP, 4ug; Detection:10164-2-AP 1:1000) with A431 cells lysate 2400ug.



Immunofluorescent analysis of (-20°C Methanol) fixed A431 cells using Cytokeratin 13 antibody (10164-2-AP) at dilution of 1:400 and CoraLite@488-Conjugated AffiniPure Goat Anti-Rabbit IgG(H+L).



1×10^6 A431 cells were intracellularly stained with 0.2 ug Anti-Human Cytokeratin 13 (10164-2-AP) and CoraLite@488-Conjugated AffiniPure Goat Anti-Rabbit IgG(H+L) at dilution 1:1000 (green), and 0.2 ug Control Antibody. Cells were fixed with 90% MeOH.