

Nur für Forschungszwecke

ACSM3 Polyklonaler Antikörper

Katalog-Nr.:10168-2-AP

Vorgestelltes Produkt

6 Publikationen



Allgemeine Informationen

Katalog-Nr.: 10168-2-AP	GenBank-Zugangsnummer: BC002790	Reinigungsmethode: Antigen-Affinitätsreinigung
Größe: 150ul , Konzentration: 300 µg/ml von Nanodrop und 167 µg/ml durch die Bradford-Methode mit BSA als Standard;	GeneID (NCBI): 6296	Empfohlene Verdünnungen: WB 1:500-1:1000 IHC 1:20-1:200 IF 1:10-1:100
Wirt: Kaninchen	Vollständiger Name: acyl-CoA synthetase medium-chain family member 3	
Isotyp: IgG	Berechnete Masse: 49 kDa, 66 kDa	
Immunogen Katalognummer: AG0224	Beobachtete Masse: 60-70 kDa	

Anwendungen

Geprüfte Anwendungen: FC, IF, IHC, WB, ELISA	Positivkontrollen: WB : HEK-293-Zellen, Mausnierengewebe
In Publikationen genannte Anwendungen: IF, IHC, WB	IHC : humanes Nierengewebe, humanes Prostatakarzinomgewebe
Getestete Reaktivität: Human, Maus, Ratte	IF : HepG2-Zellen,
Zitierte Arten: Human, Maus	

Hinweis-IHC: Antigenmaskierung mit TE-Puffer pH 9,0 empfohlen. (*) Wahlweise kann die Antigenmaskierung auch mit Citratpuffer pH 6,0 erfolgen.

Hintergrundinformationen

SA hypertension-associated rat homolog (SAH, synonym: SA) is expressed at 10-fold greater levels in the kidney of the spontaneously hypertensive rat than in the corresponding wild-type strain. The gene is linked to blood pressure levels in a number of crosses involving the spontaneously hypertensive rat and other strains of genetically hypertensive rats. Human SAH gene polymorphism may be associated with the renal prognosis of immunoglobulin A nephropathy through its effect on blood pressure. Furthermore, variation in SAH has a role in predisposition.

Bemerkenswerte Veröffentlichungen

Verfasser	Pubmed ID	Journal	Anwendung
Paul Dowling	31776009	Eur J Cell Biol	WB, IF
Limei Yan	33869039	Front Oncol	WB, IHC
Lingyun Zhang	34322485	Front Cell Dev Biol	IHC

Lagerung

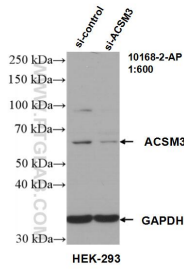
Lagerungsbedingungen:
Bei -20°C lagern. Nach dem Versand ein Jahr lang stabil
Lagerungspuffer:
PBS mit 0.02% Natriumazid und 50% Glycerin pH 7.3.
Aliquotieren ist nicht notwendig bei -20°C Lagerung

*** 20ul-Größen enthalten 0.1% BSA

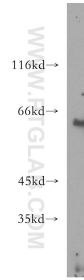
For technical support and original validation data for this product please contact:
T: 1 (888) 4PTGLAB (1-888-478-4522) (toll free in USA), or 1(312) 455-8498 (outside USA)
E: proteintech@ptglab.com
W: ptglab.com

This product is exclusively available under Proteintech Group brand and is not available to purchase from any other manufacturer.

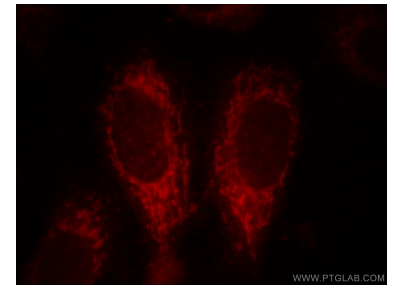
Ausgewählte Validierungsdaten



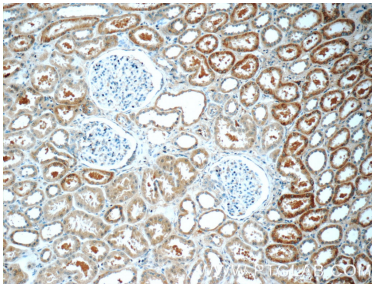
WB result of ACSM3 antibody (10168-2-AP; 1:600; incubated at room temperature for 1.5 hours) with sh-Control and sh-ACSM3 transfected HEK-293 cells.



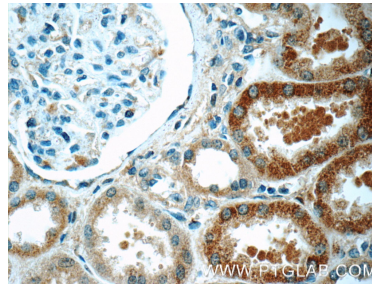
HEK-293 cells were subjected to SDS PAGE followed by western blot with 10168-2-AP (ACSM3 antibody) at dilution of 1:500 incubated at room temperature for 1.5 hours.



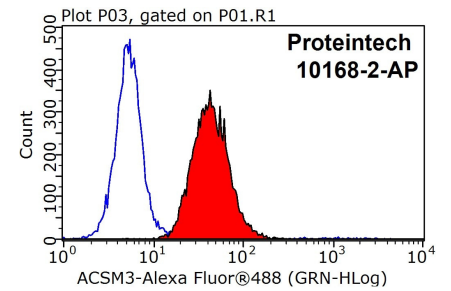
Immunofluorescent analysis of HepG2 cells, using ACSM3 antibody 10168-2-AP at 1:25 dilution and Rhodamine-labeled goat anti-rabbit IgG (red).



Immunohistochemical analysis of paraffin-embedded human kidney tissue slide using 10168-2-AP (ACSM3 Antibody) at dilution of 1:50 (under 10x lens).



Immunohistochemical analysis of paraffin-embedded human kidney tissue slide using 10168-2-AP (ACSM3 Antibody) at dilution of 1:50 (under 40x lens).



1×10^6 HepG2 cells were stained with 0.2ug ACSM3 antibody (10168-2-AP, red) and control antibody (blue). Fixed with 90% MeOH blocked with 3% BSA (30 min). Alexa Fluor 488-conjugated AffiniPure Goat Anti-Rabbit IgG(H+L) with dilution 1:1000.