

Nur für Forschungszwecke

# Mitofilin Polyklonaler Antikörper

Katalog-Nr.: 10179-1-AP

Vorgestelltes Produkt

65 Publikationen



## Allgemeine Informationen

<b>Katalog-Nr.:</b> 10179-1-AP	<b>GenBank-Zugangsnummer:</b> BC002412	<b>Reinigungsmethode:</b> Antigen-Affinitätsreinigung
<b>Größe:</b> 150ul, Konzentration: 350 µg/ml von Nanodrop;	<b>GeneID (NCBI):</b> 10989	<b>Empfohlene Verdünnungen:</b> WB 1:5000-1:50000 IP 0.5-4.0 µg für IP und 1:500-1:2000 für WB
<b>Wirt:</b> Kaninchen	<b>Vollständiger Name:</b> inner membrane protein, mitochondrial (mitofilin)	<b>IHC 1:50-1:500</b> <b>IF 1:50-1:500</b>
<b>Isotyp:</b> IgG	<b>Berechnete Masse:</b> 90 kDa	
<b>Immunogen Katalognummer:</b> AG0102	<b>Beobachtete Masse:</b> 80-90 kDa	

## Anwendungen

**Geprüfte Anwendungen:**  
FC, IF, IHC, IP, WB, ELISA

**In Publikationen genannte Anwendungen:**  
CoIP, IF, IP, WB

**Getestete Reaktivität:**  
Human, Maus, Ratte

**Zitierte Arten:**  
Hamster, Human, Maus, Ratte

**Hinweis-IHC: Antigenmaskierung mit TE-Puffer pH 9,0 empfohlen. (\*) Wahlweise kann die Antigenmaskierung auch mit Citratpuffer pH 6,0 erfolgen.**

**Positivkontrollen:**

**WB:** COLO 320-Zellen, HEK-293-Zellen, HeLa-Zellen, HepG2-Zellen, Maushirngewebe, MCF-7-Zellen, Raji-Zellen, Rattenhirngewebe

**IP:** Raji-Zellen,

**IHC:** humanes Mammakarzinomgewebe,

**IF:** HeLa-Zellen,

## Hintergrundinformationen

IMMT (also known as mitofilin) is an inner mitochondrial membrane protein that is preferentially expressed in heart tissue and is commonly used as the marker for mitochondria. Mitofilin is known to be a critical organizer of mitochondrial cristae morphology and is indispensable for normal mitochondrial function. Three isoforms of mitofilin exist due to the alternative splicing. All three proteins of 87kD, 89kD and 80kD can be detected in immunoblot analysis with this antibody.

## Bemerkenswerte Veröffentlichungen

Verfasser	Pubmed ID	Journal	Anwendung
Q E Xie	34571250	Mitochondrion	WB
Steven J Edwards	33195398	Front Mol Biosci	IF
Brendan Miller	36127429	Mol Psychiatry	WB,IP

## Lagerung

**Lagerungsbedingungen:**

Bei -20°C lagern. Nach dem Versand ein Jahr lang stabil

**Lagerungspuffer:**

PBS mit 0.02% Natriumazid und 50% Glycerin pH 7.3.

Aliquotieren ist nicht notwendig bei -20°C Lagerung

\*\*\* 20ul-Größen enthalten 0.1% BSA

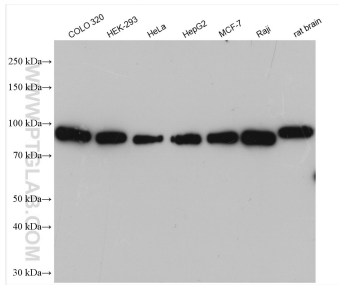
For technical support and original validation data for this product please contact:

T: 1 (888) 4PTGLAB (1-888-478-4522) (toll free in USA), or 1(312) 455-8498 (outside USA)

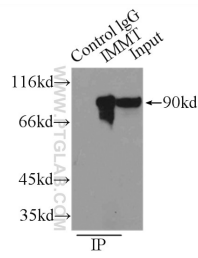
E: proteintech@ptglab.com  
W: ptglab.com

This product is exclusively available under Proteintech Group brand and is not available to purchase from any other manufacturer.

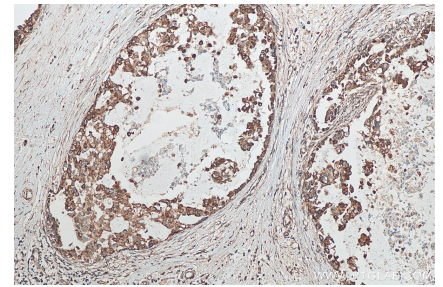
## Ausgewählte Validierungsdaten



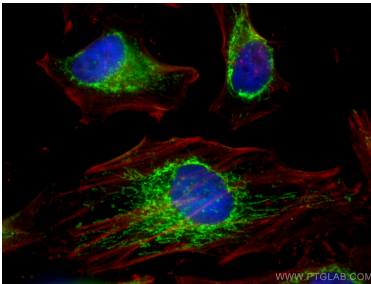
Various lysates were subjected to SDS PAGE followed by western blot with 10179-1-AP (Mitofilin antibody) at dilution of 1:15000 incubated at room temperature for 1.5 hours.



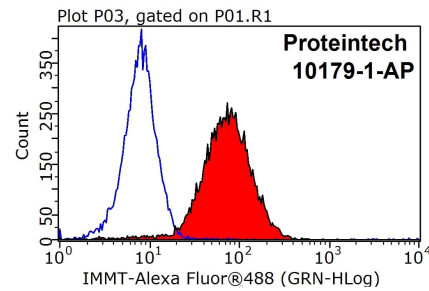
IP Result of anti-Mitofilin (IP:10179-1-AP, 3 $\mu$ g; Detection:10179-1-AP 1:1000) with Raji cells lysate 3800 $\mu$ g.



Immunohistochemical analysis of paraffin-embedded human breast cancer tissue slide using 10179-1-AP (Mitofilin antibody) at dilution of 1:200 (under 10x lens). Heat mediated antigen retrieval with Tris-EDTA buffer (pH 9.0).



Immunofluorescent analysis of (4% PFA) fixed HeLa cells using Mitofilin antibody (10179-1-AP) at dilution of 1:200 and CoraLite@488-Conjugated AffiniPure Goat Anti-Rabbit IgG(H+L), CL594-Phalloidin (red).



1x10<sup>6</sup> HEK-293T cells were stained with .2 $\mu$ g Mitofilin antibody (10179-1-AP, red) and control antibody (blue). Fixed with 90% MeOH blocked with 3% BSA (30 min). Alexa Fluor 488-conjugated AffiniPure Goat Anti-Rabbit IgG(H+L) with dilution 1:1000.