

Nur für Forschungszwecke

# ATG5 Polyklonaler Antikörper

Katalog-Nr.: 10181-2-AP

Vorgestelltes Produkt

223 Publikationen



## Allgemeine Informationen

<b>Katalog-Nr.:</b> 10181-2-AP	<b>GenBank-Zugangsnummer:</b> BC002699	<b>Reinigungsmethode:</b> Antigen-Affinitätsreinigung
<b>Größe:</b> 150ul, Konzentration: 650 µg/ml von Nanodrop;	<b>GeneID (NCBI):</b> 9474	<b>Empfohlene Verdünnungen:</b> WB 1:1000-1:5000 IP 0.5-4.0 µg für IP und 1:1000-1:6000 für WB IHC 1:50-1:500
<b>Wirt:</b> Kaninchen	<b>Vollständiger Name:</b> ATG5 autophagy related 5 homolog (S. cerevisiae)	
<b>Isotyp:</b> IgG	<b>Berechnete Masse:</b> 32 kDa	
<b>Immunogen Katalognummer:</b> AG0214	<b>Beobachtete Masse:</b> 32 kDa, 40-45 kDa, 50-55 kDa	

## Anwendungen

### Geprüfte Anwendungen:

IHC, IP, WB, ELISA

### In Publikationen genannte Anwendungen:

FC, IF, IHC, WB

### Getestete Reaktivität:

Human, Maus, Ratte

### Zitierte Arten:

Affe, Hausschwein, Huhn, Human, Maus, Ratte, Rind, Zackenbarsch

**Hinweis-IHC: Antigenmaskierung mit TE-Puffer pH 9,0 empfohlen. (\*) Wahlweise kann die Antigenmaskierung auch mit Citratpuffer pH 6,0 erfolgen.**

### Positivkontrollen:

**WB:** A549-Zellen, HeLa-Zellen, HepG2-Zellen, Mausnierengewebe

**IP:** HeLa-Zellen,

**IHC:** humanes Kolonkarzinomgewebe, humanes Gliomgewebe

## Hintergrundinformationen

ATG5, also named as APG5L and ASP, belongs to the ATG5 family. It is required for autophagy. It plays an important role in the apoptotic process, possibly within the modified cytoskeleton. Its expression is a relatively late event in the apoptotic process, occurring downstream of caspase activity. Autophagy is a catabolic process for the autophagosomic-lysosomal degradation of bulk cytoplasmic contents. Formation of the autophagosome involves a ubiquitin-like conjugation system in which Atg12 is covalently bound to Atg5 and targeted to autophagosome vesicles. It mediates autophagosome-independent host protection. This antibody is raised against 28-275 amino acids of human ATG5. It can recognize the ATG5-ATG12 complex (55 kDa) which can be truncated and generate a 40-45 kDa band. 10181-2-AP also recognizes the free ATG5 (32 kDa).

## Bemerkenswerte Veröffentlichungen

Verfasser	Pubmed ID	Journal	Anwendung
Zeen Zhu	36248959	Front Oncol	WB
Samana Batool	30274346	Int J Mol Sci	WB
Jiawei Hao	36126167	Autophagy	WB

## Lagerung

### Lagerungsbedingungen:

Bei -20°C lagern. Nach dem Versand ein Jahr lang stabil

### Lagerungspuffer:

PBS mit 0.02% Natriumazid und 50% Glycerin pH 7.3.

Aliquotieren ist nicht notwendig bei -20°C Lagerung

\*\*\* 20ul-Größen enthalten 0.1% BSA

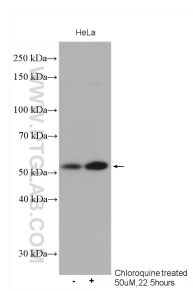
For technical support and original validation data for this product please contact:

T: 1 (888) 4PTGLAB (1-888-478-4522) (toll free in USA), or 1(312) 455-8498 (outside USA)

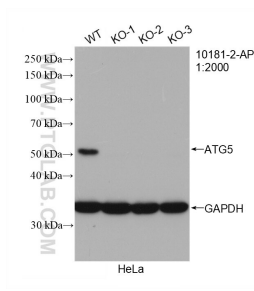
E: proteintech@ptglab.com  
W: ptglab.com

This product is exclusively available under Proteintech Group brand and is not available to purchase from any other manufacturer.

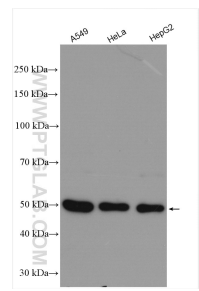
## Ausgewählte Validierungsdaten



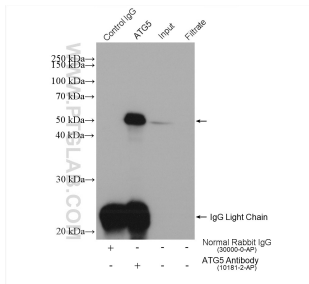
HeLa cells were subjected to SDS PAGE followed by western blot with 10181-2-AP (ATG5 antibody) at dilution of 1:500 incubated at room temperature for 1.5 hours.



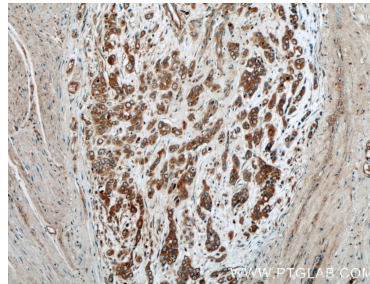
WB result of ATG5 antibody (10181-2-AP; 1:2000; room temperature for 1.5 hours) with wild-type and ATG5 knockout HeLa cells.



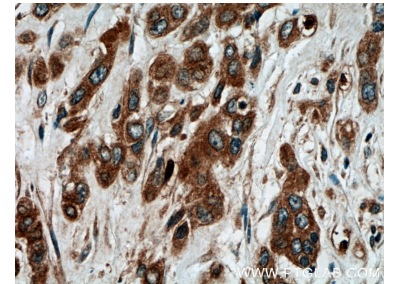
Various lysates were subjected to SDS PAGE followed by western blot with 10181-2-AP (ATG5 antibody) at dilution of 1:2500 incubated at room temperature for 1.5 hours.



IP result of anti-ATG5(IP:10181-2-AP, 4ug; Detection:10181-2-AP 1:3000) with HeLa cells lysate 1760 ug.



Immunohistochemical analysis of paraffin-embedded human colon cancer tissue slide using 10181-2-AP (ATG5 antibody) at dilution of 1:200 (under 10x lens).



Immunohistochemical analysis of paraffin-embedded human colon cancer tissue slide using 10181-2-AP (ATG5 antibody) at dilution of 1:200 (under 40x lens).