

Nur für Forschungszwecke

WTAP Polyklonaler Antikörper

Katalog-Nr.: 10200-1-AP

Vorgestelltes Produkt

29 Publikationen



Allgemeine Informationen

| | | |
|--|--|--|
| Katalog-Nr.: 10200-1-AP | GenBank-Zugangsnummer: BC000383 | Reinigungsmethode: Antigen-Affinitätsreinigung |
| Größe: 150ul, Konzentration: 350 µg/ml von Nanodrop; | GeneID (NCBI): 9589 | Empfohlene Verdünnungen: WB 1:2000-1:16000 IP 0.5-4.0 µg für IP und 1:500-1:1000 für WB |
| Wirt: Kaninchen | Vollständiger Name: Wilms tumor 1 associated protein | |
| Isotyp: IgG | Berechnete Masse: 45 kDa | |
| Immunogen Katalognummer: AG0259 | Beobachtete Masse: 50-55 kDa | |

Anwendungen

| | |
|---|---|
| Geprüfte Anwendungen: IP, WB, ELISA | Positivkontrollen: WB: HeLa-Zellen, HepG2-Zellen, Jurkat-Zellen, K-562-Zellen, L02-Zellen, MOLT-4-Zellen IP: HEK-293-Zellen, |
| In Publikationen genannte Anwendungen: IF, IHC, IP, RIP, WB | |
| Getestete Reaktivität: Human, Maus, Ratte | |
| Zitierte Arten: Human, Maus, Ratte | |

Hintergrundinformationen

WTAP, also named as KIAA0105 and hFL(2)D, is previously identified as a protein associated with Wilms' tumor-1 (WT-1) protein that is essential for the development of the genitourinary system. It is a Pre-mRNA-splicing regulator protein. It is a regulatory subunit of the WMM N6-methyltransferase complex which plays a role in the efficiency of mRNA splicing and processing and mRNA stability. It is required for accumulation of METTL3 and METTL14 to nuclear speckle. MW of WTAP is 50-55 kDa due to phosphorylation.

Bemerkenswerte Veröffentlichungen

| Verfasser | Pubmed ID | Journal | Anwendung |
|---------------|-----------|------------|-----------|
| Yong Ge | 34467630 | EMBO Rep | WB,IP |
| Yuanpei Li | 36289222 | Nat Commun | WB,IHC,IF |
| Lingfang Wang | 36288717 | Cell Rep | WB |

Lagerung

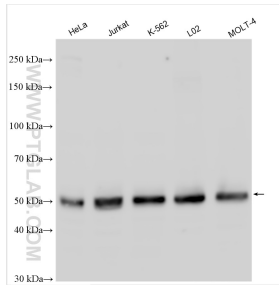
Lagerungsbedingungen:
Bei -20°C lagern. Nach dem Versand ein Jahr lang stabil
Lagerungspuffer:
PBS mit 0.02% Natriumazid und 50% Glycerin pH 7.3.
Aliquotieren ist nicht notwendig bei -20°C Lagerung

*** 20ul-Größen enthalten 0.1% BSA

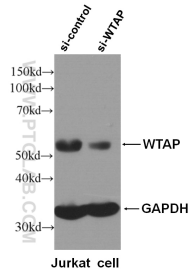
For technical support and original validation data for this product please contact:
T: 1 (888) 4PTGLAB (1-888-478-4522) (toll free in USA), or 1(312) 455-8498 (outside USA)
E: proteintech@ptglab.com
W: ptglab.com

This product is exclusively available under Proteintech Group brand and is not available to purchase from any other manufacturer.

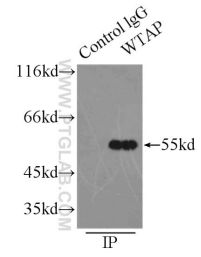
Ausgewählte Validierungsdaten



HeLa cells were subjected to SDS PAGE followed by western blot with 10200-1-AP (WTAP antibody) at dilution of 1:8000 incubated at room temperature for 1.5 hours.



WB result of WTAP specific antibody (10200-1-AP, 1:6000) with si-control and si-WTAP transfected Jurkat cells.



IP Result of anti-WTAP (IP:10200-1-AP, 3ug; Detection:10200-1-AP 1:500) with HEK-293 cells lysate 2500ug.