

Nur für Forschungszwecke

# APEX1 Polyklonaler Antikörper

Katalog-Nr.: 10203-1-AP

Vorgestelltes Produkt

18 Publikationen



## Allgemeine Informationen

Katalog-Nr.:  
10203-1-AP

Größe:

150ul, Konzentration: 800 µg/ml von  
Nanodrop und 533 µg/ml durch die  
Bradford-Methode mit BSA als  
Standard;

Wirt:

Kaninchen

Isotyp:

IgG

Immunogen Katalognummer:  
AG0251

GenBank-Zugangsnummer:

BC002338

GeneID (NCBI):

328

Vollständiger Name:

APEX nuclease (multifunctional DNA  
repair enzyme) 1

Berechnete Masse:

36 kDa

Beobachtete Masse:

36 kDa

Reinigungsmethode:

Antigen-Affinitätsreinigung

Empfohlene Verdünnungen:

WB 1:500-1:2000  
IP 0.5-4.0 µg für IP und 1:500-1:2000  
für WB  
IHC 1:20-1:200  
IF 1:10-1:100

## Anwendungen

Geprüfte Anwendungen:

IF, IHC, IP, WB, ELISA

In Publikationen genannte Anwendungen:

IF, IHC, WB

Getestete Reaktivität:

Human, Maus, Ratte

Zitierte Arten:

Human, Maus, Ratte

**Hinweis-IHC: Antigendemaskierung mit TE-  
Puffer pH 9,0 empfohlen. (\*) Wahlweise  
kann die Antigendemaskierung auch mit  
Citratpuffer pH 6,0 erfolgen.**

Positivkontrollen:

WB: HeLa-Zellen, Maushirngewebe

IP: HeLa-Zellen,

IHC: humanes Mammakarzinomgewebe,

IF: MCF-7-Zellen,

## Hintergrundinformationen

APEX1, also named as APE, APE1, HAP1 and REF-1, belongs to the DNA repair enzymes AP/ExoA family. It is a multifunctional protein that plays a central role in the cellular response to oxidative stress. The two major activities of APEX1 are in DNA repair and redox regulation of transcriptional factors. APEX nuclease is a DNA repair enzyme having apurinic/apyrimidinic (AP) endonuclease, 3-prime,5-prime-exonuclease, DNA 3-prime repair diesterase, and DNA 3-prime-phosphatase activities. On the other hand, APEX1 also exerts reversible nuclear redox activity to regulate DNA binding affinity and transcriptional activity of transcriptional factors by controlling the redox status of their DNA-binding domain, such as the FOS/JUN AP-1 complex after exposure to IR. APEX1 is involved in calcium-dependent down-regulation of parathyroid hormone (PTH) expression by binding to negative calcium response elements (nCaREs). When acetylated at Lys-6 and Lys-7, APEX1 stimulates the YBX1-mediated MDR1 promoter activity, leading to drug resistance. It also acts as an endoribonuclease involved in the control of single-stranded RNA metabolism. It plays a role in regulating MYC mRNA turnover by preferentially cleaving in between UA and CA dinucleotides of the MYC coding region determinant (CRD). In association with NMD1, APEX1 plays a role in the rRNA quality control process during cell cycle progression. 10203-1-AP is a rabbit polyclonal antibody raised against full length APE1 of human origin.

## Bemerkenswerte Veröffentlichungen

Verfasser	Pubmed ID	Journal	Anwendung
Meng Chen	36096885	Cell Death Dis	WB
Wei Liang	31564904	Onco Targets Ther	WB
Jingjing Zhang	29066842	Sci Rep	IF

## Lagerung

Lagerungsbedingungen:

Bei -20°C lagern. Nach dem Versand ein Jahr lang stabil

Lagerungspuffer:

PBS mit 0.02% Natriumazid und 50% Glycerin pH 7.3.

Aliquotieren ist nicht notwendig bei -20°C Lagerung

\*\*\* 20ul-Größen enthalten 0.1% BSA

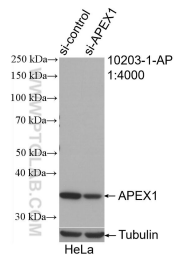
For technical support and original validation data for this product please contact:

T: 1 (888) 4PTGLAB (1-888-478-4522) (toll free  
in USA), or 1(312) 455-8498 (outside USA)

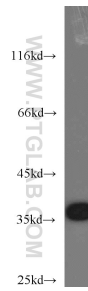
E: proteintech@ptglab.com  
W: ptglab.com

This product is exclusively available under Proteintech Group brand and is not available to purchase from any other manufacturer.

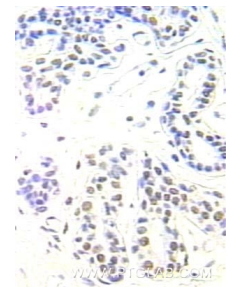
## Ausgewählte Validierungsdaten



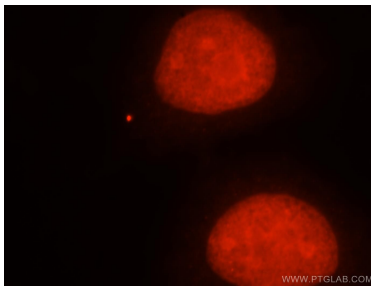
WB result of APEX1 antibody (10203-1-AP; 1:4000; incubated at room temperature for 1.5 hours) with sh-Control and sh-APEX1 transfected HeLa cells.



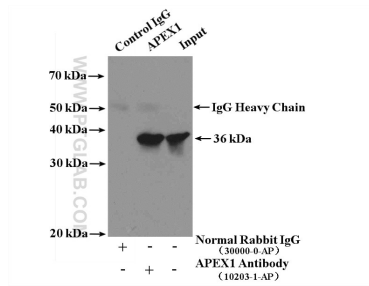
HeLa cells were subjected to SDS PAGE followed by western blot with 10203-1-AP (APEX1 antibody) at dilution of 1:1000 incubated at room temperature for 1.5 hours.



Immunohistochemical analysis of paraffin-embedded human breast cancer using 10203-1-AP (APEX1 antibody) at dilution of 1:100 (under 25x lens).



Immunofluorescent analysis of MCF-7 cells, using APEX1 antibody 10203-1-AP at 1:25 dilution and Rhodamine-labeled goat anti-rabbit IgG (red).



IP Result of anti-APEX1 (IP:10203-1-AP, 4ug; Detection:10203-1-AP 1:1000) with HeLa cells lysate 1600ug.