

## Allgemeine Informationen

<b>Katalog-Nr.:</b> 10206-1-AP	<b>GenBank-Zugangsnummer:</b> BC000103	<b>Reinigungsmethode:</b> Antigen-Affinitätsreinigung
<b>Größe:</b> 150ul , Konzentration: 600 µg/ml von Nanodrop und 300 µg/ml durch die Bradford-Methode mit BSA als Standard;	<b>GeneID (NCBI):</b> 8440	<b>Empfohlene Verdünnungen:</b> WB 1:500-1:1000 IHC 1:50-1:500
<b>Wirt:</b> Kaninchen	<b>Vollständiger Name:</b> NCK adaptor protein 2	
<b>Isotyp:</b> IgG	<b>Berechnete Masse:</b> 43 kDa	
<b>Immunogen Katalognummer:</b> AG0262	<b>Beobachtete Masse:</b> 43 kDa	

## Anwendungen

<b>Geprüfte Anwendungen:</b> IHC, WB,ELISA	<b>Positivkontrollen:</b> WB : U-937-Zellen, IHC : humanes Plazenta-Gewebe,
<b>In Publikationen genannte Anwendungen:</b> WB	
<b>Getestete Reaktivität:</b> Human, Maus, Ratte	
<b>Zitierte Arten:</b> Maus	

**Hinweis-IHC: Antigendemaskierung mit TE-Puffer pH 9,0 empfohlen. (\*) Wahlweise kann die Antigendemaskierung auch mit Citratpuffer pH 6,0 erfolgen.**

## Hintergrundinformationen

Lots of the protein-protein interactions that are essential for eukaryotic intracellular signal transduction are mediated by protein binding modules including SH2, SH3, and LIM domains. NCK is a SH3- and SH2-containing adaptor protein implicated in coordinating various signaling pathways, including those of growth factor receptors and cell adhesion receptors. NCK-2 is a ubiquitously expressed and NCK-related adaptor protein comprising primarily three N-terminal SH3 domains and one C-terminal SH2 domain. NCK-2 interacts with PINCH, a LIM-only protein implicated in integrin-linked kinase signaling, and recognizes several key components of growth factor kinase-signaling pathways including EGF receptors, PDGF receptor, and IRS-1. NCK-2 may thus function as an adaptor protein connecting the growth factor receptor-signaling pathways with the integrin-signaling pathways. NCK-2 also interacts with focal adhesion kinase (FAK), a cytoplasmic protein tyrosine kinase critically involved in the cellular control of motility.

## Bemerkenswerte Veröffentlichungen

Verfasser	Pubmed ID	Journal	Anwendung
Mi Huang	32508946	Evid Based Complement Alternat Med	WB

## Lagerung

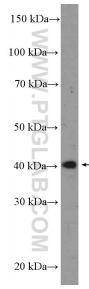
**Lagerungsbedingungen:**  
Bei -20°C lagern. Nach dem Versand ein Jahr lang stabil  
**Lagerungspuffer:**  
PBS mit 0.02% Natriumazid und 50% Glycerin pH 7.3.  
 Aliquotieren ist nicht notwendig bei -20°C Lagerung

**\*\*\* 20ul-Größen enthalten 0.1% BSA**

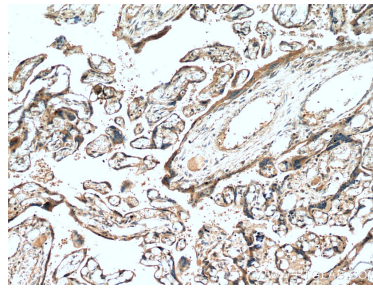
For technical support and original validation data for this product please contact:  
 T: 1 (888) 4PTGLAB (1-888-478-4522) (toll free in USA), or 1(312) 455-8498 (outside USA)  
 E: [proteintech@ptglab.com](mailto:proteintech@ptglab.com)  
 W: [ptglab.com](http://ptglab.com)

**This product is exclusively available under Proteintech Group brand and is not available to purchase from any other manufacturer.**

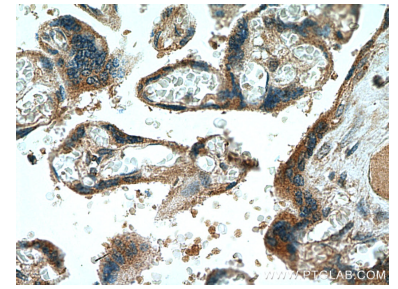
## Ausgewählte Validierungsdaten



U-937 cells were subjected to SDS PAGE followed by western blot with 10206-1-AP (NCK2 Antibody) at dilution of 1:600 incubated at room temperature for 1.5 hours.



Immunohistochemical analysis of paraffin-embedded human placenta tissue slide using 10206-1-AP (NCK2 Antibody) at dilution of 1:200 (under 10x lens).



Immunohistochemical analysis of paraffin-embedded human placenta tissue slide using 10206-1-AP (NCK2 Antibody) at dilution of 1:200 (under 40x lens).