

Nur für Forschungszwecke

CDC37 Polyklonaler Antikörper

Katalog-Nr.:10218-1-AP

Vorgestelltes Produkt

8 Publikationen



Allgemeine Informationen

Katalog-Nr.:
10218-1-AP

Größe:
150ul, Konzentration: 350 µg/ml von
Nanodrop und 200 µg/ml durch die
Bradford-Methode mit BSA als
Standard;

Wirt:
Kaninchen

Isotyp:
IgG

Immunogen Katalognummer:
AG0267

GenBank-Zugangsnummer:
BC000083

GeneID (NCBI):
11140

Vollständiger Name:
cell division cycle 37 homolog (S.
cerevisiae)

Berechnete Masse:
44 kDa

Beobachtete Masse:
45-50 kDa

Reinigungsmethode:

Antigen-Affinitätsreinigung

Empfohlene Verdünnungen:

WB 1:500-1:2000
IP 0.5-4.0 µg für IP und 1:500-1:2000
für WB
IHC 1:20-1:200
IF 1:20-1:200

Anwendungen

Geprüfte Anwendungen:

FC, IF, IHC, IP, WB, ELISA

In Publikationen genannte Anwendungen:

IP, WB

Getestete Reaktivität:

Affe, Human, Maus

Zitierte Arten:

Human

Hinweis-IHC: Antigendemaskierung mit TE-Puffer pH 9,0 empfohlen. (*) Wahlweise kann die Antigendemaskierung auch mit Citratpuffer pH 6,0 erfolgen.

Positivkontrollen:

WB : HEK-293-Zellen, A431-Zellen, COS-7-Zellen,
Jurkat-Zellen

IP : HEK-293-Zellen,

IHC : humanes Kolonkarzinomgewebe,

IF : HeLa-Zellen, A431-Zellen, HEK-293-Zellen, MCF-7-Zellen

Hintergrundinformationen

Cdc (cell division control) family of proteins are regulatory proteins involved in the processes of cell cycle and proliferation. CDC37, migrated as a protein of 50 kDa in SDS PAGE, is a co-chaperone protein that recruits several immature client kinases to Hsp90 for proper folding. It functions in association with Hsp90, although little is known of its mechanism of action or where it fits into a folding pathway involving other Hsp90 cochaperones. CDC37 up-regulation is a common early event in some localized human cancers. But, the effect of CDC37 dysregulation in human cells is unclear.

Bemerkenswerte Veröffentlichungen

Verfasser	Pubmed ID	Journal	Anwendung
Jiawei Zhang	35595767	Nat Commun	WB
Qian Zhao	32156008	Int J Mol Sci	WB
Dongrong Zhu	33667688	Pharmacol Res	WB, IP

Lagerung

Lagerungsbedingungen:

Bei -20°C lagern. Nach dem Versand ein Jahr lang stabil

Lagerungspuffer:

PBS mit 0.02% Natriumazid und 50% Glycerin pH 7.3.

Aliquotieren ist nicht notwendig bei -20°C Lagerung

*** 20ul-Größen enthalten 0.1% BSA

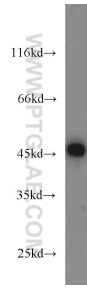
For technical support and original validation data for this product please contact:

T: 1 (888) 4PTGLAB (1-888-478-4522) (toll free
in USA), or 1(312) 455-8498 (outside USA)

E: proteintech@ptglab.com
W: ptglab.com

This product is exclusively available under Proteintech Group brand and is not available to purchase from any other manufacturer.

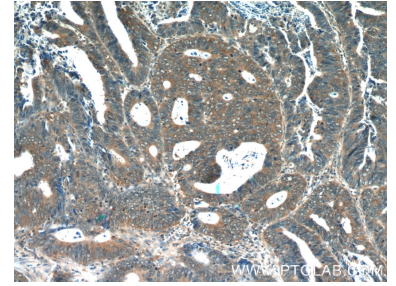
Ausgewählte Validierungsdaten



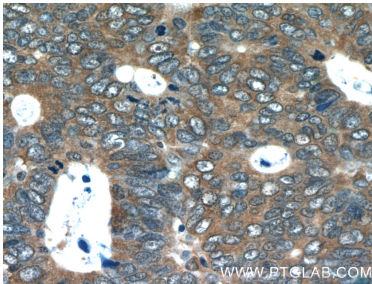
HEK-293 cells were subjected to SDS PAGE followed by western blot with 10218-1-AP (CDC37 antibody) at dilution of 1:1000 incubated at room temperature for 1.5 hours.



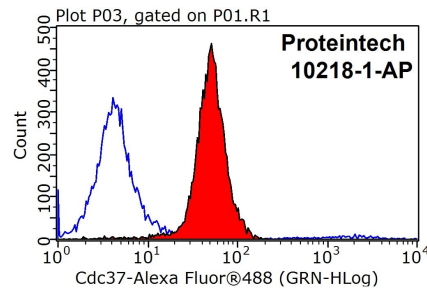
Immunofluorescent analysis of HeLa cells using 10218-1-AP (Cdc37 antibody) at dilution of 1:50 and Alexa Fluor 488-conjugated AffiniPure Goat Anti-Rabbit IgG(H+L).



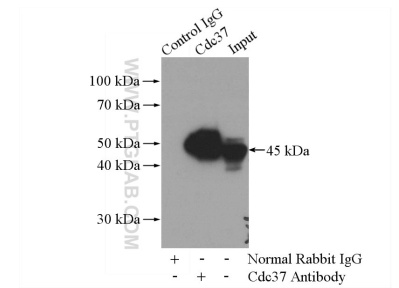
Immunohistochemical analysis of paraffin-embedded human colon cancer tissue slide using 10218-1-AP (CDC37 Antibody) at dilution of 1:50 (under 10x lens).



Immunohistochemical analysis of paraffin-embedded human colon cancer tissue slide using 10218-1-AP (CDC37 Antibody) at dilution of 1:50 (under 40x lens).



1X10⁶ MCF-7 cells were stained with 0.2ug CDC37 antibody (10218-1-AP, red) and control antibody (blue). Fixed with 90% MeOH blocked with 3% BSA (30 min). Alexa Fluor 488-conjugated AffiniPure Goat Anti-Rabbit IgG(H+L) with dilution 1:1000.



IP Result of anti-CDC37 (IP:10218-1-AP, 4ug; Detection:10218-1-AP 1:1000) with HEK-293 cells lysate 3200ug.