

## Allgemeine Informationen

<b>Katalog-Nr.:</b> 10222-1-AP	<b>GenBank-Zugangsnummer:</b> BC000717	<b>Reinigungsmethode:</b> Antigen-Affinitätsreinigung
<b>Größe:</b> 150ul , Konzentration: 450 µg/ml von Nanodrop;	<b>GeneID (NCBI):</b> 10657	<b>Empfohlene Verdünnungen:</b> WB 1:1000-1:4000 IP 0.5-4.0 ug für IP und 1:500-1:2000 für WB
<b>Wirt:</b> Kaninchen	<b>Vollständiger Name:</b> KH domain containing, RNA binding, signal transduction associated 1	<b>IHC 1:20-1:200</b> <b>IF 1:50-1:500</b>
<b>Isotyp:</b> IgG	<b>Berechnete Masse:</b> 48 kDa	
<b>Immunogen Katalognummer:</b> AG0235	<b>Beobachtete Masse:</b> 68 kDa	

## Anwendungen

**Geprüfte Anwendungen:**  
FC, IF, IHC, IP, WB, ELISA

**In Publikationen genannte Anwendungen:**  
CoIP, IHC, RIP, WB

**Getestete Reaktivität:**  
Human, Maus, Ratte

**Zitierte Arten:**  
Human, Maus

**Hinweis-IHC: Antigenmaskierung mit TE-Puffer pH 9,0 empfohlen. (\*) Wahlweise kann die Antigenmaskierung auch mit Citratpuffer pH 6,0 erfolgen.**

**Positivkontrollen:**

**WB:** HT-29-Zellen, HEK-293-Zellen, HeLa-Zellen, Maushirngewebe, NIH/3T3-Zellen, Rattenhirngewebe

**IP:** HeLa-Zellen,

**IHC:** humanes Mammakarzinomgewebe,

**IF:** Maushirngewebe,

## Hintergrundinformationen

KHDRBS1, also named as SAM68, p62 and p68, belongs to the KHDRBS family. It is recruited and tyrosine phosphorylated by several receptor systems, for example the T-cell, leptin and INS receptors. Once phosphorylated, KHDRBS1 functions as an adapter protein in signal transduction cascades by binding to SH2 and SH3 domain-containing proteins. It represses CBP-dependent transcriptional activation apparently by competing with other nuclear factors for binding to CBP. KHDRBS1 also acts as a putative regulator of mRNA stability and/or translation rates and mediates mRNA nuclear export. KHDRBS1 has three isoforms with calculated MW of 44-48kd. For isoform with a calculated MW of 48.2 kD, it migrated as a 68kD protein on SDS-PAGE gels [PMID: 10564820]. This is a rabbit polyclonal antibody raised against residues near the N terminus of human KHDRBS1.

## Bemerkenswerte Veröffentlichungen

Verfasser	Pubmed ID	Journal	Anwendung
Xin Yu	36247240	Am J Transl Res	IHC,WB
Song Zhu	33537092	Theranostics	IHC
Cira Dansokho	26912648	Brain	IHC

## Lagerung

**Lagerungsbedingungen:**

Bei -20°C lagern. Nach dem Versand ein Jahr lang stabil

**Lagerungspuffer:**

PBS mit 0.02% Natriumazid und 50% Glycerin pH 7.3.

Aliquotieren ist nicht notwendig bei -20°C Lagerung

**\*\*\* 20ul-Größen enthalten 0.1% BSA**

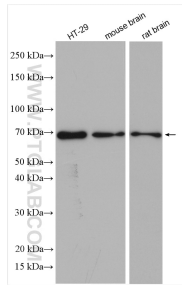
For technical support and original validation data for this product please contact:

T: 1 (888) 4PTGLAB (1-888-478-4522) (toll free in USA), or 1(312) 455-8498 (outside USA)

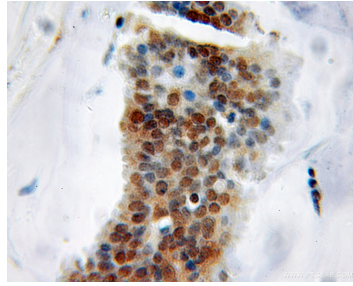
E: [proteintech@ptglab.com](mailto:proteintech@ptglab.com)  
W: [ptglab.com](http://ptglab.com)

**This product is exclusively available under Proteintech Group brand and is not available to purchase from any other manufacturer.**

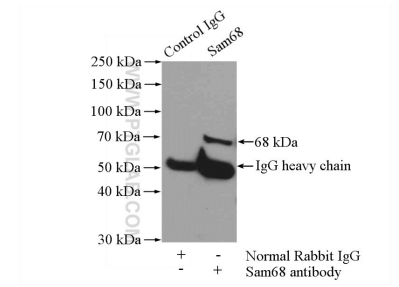
## Ausgewählte Validierungsdaten



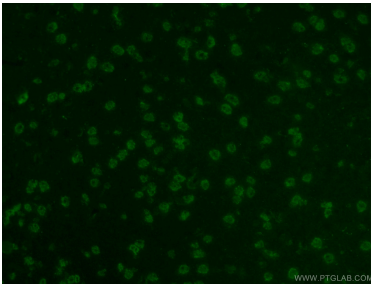
Various lysates were subjected to SDS PAGE followed by western blot with 10222-1-AP (Sam68 antibody) at dilution of 1:2000 incubated at room temperature for 1.5 hours.



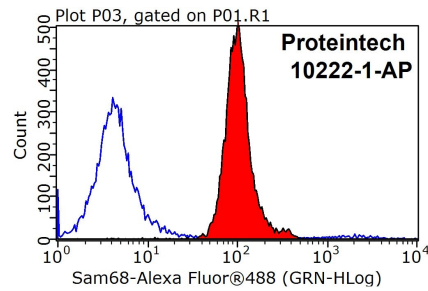
Immunohistochemical analysis of paraffin-embedded human breast cancer using 10222-1-AP (KHDRBS1 antibody) at dilution of 1:50 (under 10x lens).



IP Result of anti-Sam68 (IP:10222-1-AP, 4ug; Detection:10222-1-AP 1:1000) with HeLa cells lysate 1200ug.



Immunofluorescent analysis of (4% PFA) fixed mouse brain tissue using 10222-1-AP (Sam68 antibody) at dilution of 1:50 and Alexa Fluor 488-conjugated AffiniPure Goat Anti-Rabbit IgG(H+L).



1x10<sup>6</sup> MCF-7 cells were stained with 0.2ug Sam68 antibody (10222-1-AP, red) and control antibody (blue). Fixed with 90% MeOH blocked with 3% BSA (30 min). Alexa Fluor 488-conjugated AffiniPure Goat Anti-Rabbit IgG(H+L) with dilution 1:1000.