

## Allgemeine Informationen

<b>Katalog-Nr.:</b> 10227-1-AP	<b>GenBank-Zugangsnummer:</b> BC000461	<b>Reinigungsmethode:</b> Antigen-Affinitätsreinigung
<b>Größe:</b> 150ul, Konzentration: 700 µg/ml von Nanodrop;	<b>GeneID (NCBI):</b> 8894	<b>Empfohlene Verdünnungen:</b> WB 1:5000-1:50000 IP 0.5-4.0 µg für IP und 1:500-1:2000 für WB
<b>Wirt:</b> Kaninchen	<b>Vollständiger Name:</b> eukaryotic translation initiation factor 2, subunit 2 beta, 38kDa	<b>IHC 1:20-1:200</b> <b>IF 1:10-1:100</b>
<b>Isotyp:</b> IgG	<b>Berechnete Masse:</b> 38 kDa	
<b>Immunogen Katalognummer:</b> AG0269	<b>Beobachtete Masse:</b> 50 kDa	

## Anwendungen

### Geprüfte Anwendungen:

IF, IHC, IP, WB, ELISA

### In Publikationen genannte Anwendungen:

WB

### Getestete Reaktivität:

Human, Maus, Ratte

### Zitierte Arten:

Human, Maus

**Hinweis-IHC: Antigenmaskierung mit TE-Puffer pH 9,0 empfohlen. (\*) Wahlweise kann die Antigenmaskierung auch mit Citratpuffer pH 6,0 erfolgen.**

### Positivkontrollen:

**WB:** HEK-293T-Zellen, C6-Zellen, HeLa-Zellen, HepG2-Zellen, Jurkat-Zellen, L02-Zellen, Maushodengewebe, Mauslebergewebe, NIH/3T3-Zellen, PC-3-Zellen, Rattenlebergewebe

**IP:** Mauslebergewebe,

**IHC:** humanes Hodengewebe, humanes Lebergewebe

**IF:** HepG2-Zellen, L02-Zellen

## Hintergrundinformationen

Eukaryotic translation initiation factor 2 (eIF2) is composed of three subunits, eIF2 alpha, eIF2 beta (EIF2S2), and eIF2 gamma, which are present in equal molar amounts. eIF2 beta plays a central role in the maintenance of what is generally considered a rate-limiting step in mRNA translation. In the early steps of protein synthesis, eIF2 beta binds GTP and Met-tRNA and transfers Met-tRNA to the 40S ribosomal subunit. At the end of the initiation process, GTP bound to eIF2 beta is hydrolyzed to GDP and the eIF2/GDP complex is released from the ribosome. The exchange of GDP bound to eIF2 beta for GTP is a prerequisite to binding Met-tRNA and is mediated by eIF2 beta, which recycles the eIF2 complex for another round of initiation.

## Bemerkenswerte Veröffentlichungen

Verfasser	Pubmed ID	Journal	Anwendung
Genee Y Lee	24755469	Cancer Res	WB
Matthias Kroiss	19690462	Fly (Austin)	WB
M Fittschen	25721894	Neurogenetics	WB

## Lagerung

### Lagerungsbedingungen:

Bei -20°C lagern. Nach dem Versand ein Jahr lang stabil

### Lagerungspuffer:

PBS mit 0.02% Natriumazid und 50% Glycerin pH 7.3.

Aliquotieren ist nicht notwendig bei -20°C Lagerung

**\*\*\* 20ul-Größen enthalten 0.1% BSA**

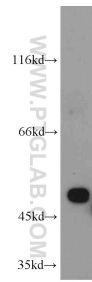
For technical support and original validation data for this product please contact:

T: 1 (888) 4PTGLAB (1-888-478-4522) (toll free in USA), or 1(312) 455-8498 (outside USA)

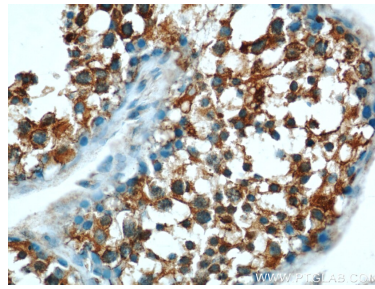
E: [proteintech@ptglab.com](mailto:proteintech@ptglab.com)  
W: [ptglab.com](http://ptglab.com)

**This product is exclusively available under Proteintech Group brand and is not available to purchase from any other manufacturer.**

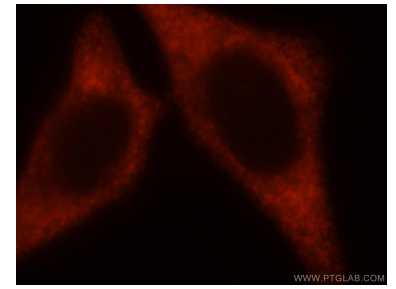
## Ausgewählte Validierungsdaten



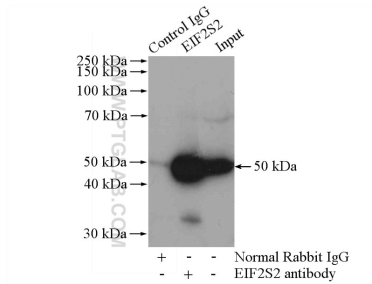
mouse liver tissue were subjected to SDS PAGE followed by western blot with 10227-1-AP (EIF2S2 antibody) at dilution of 1:1000 incubated at room temperature for 1.5 hours.



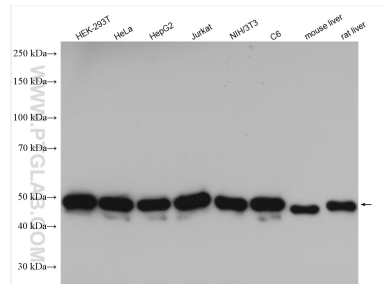
Immunohistochemical analysis of paraffin-embedded human testis using 10227-1-AP (EIF2S2 antibody) at dilution of 1:50 (under 40x lens).



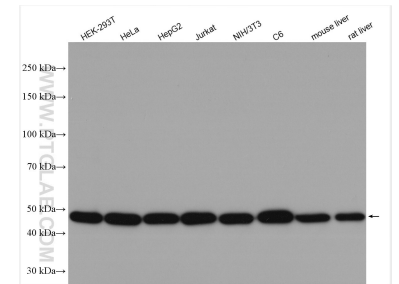
Immunofluorescent analysis of HepG2 cells, using EIF2S2 antibody 10227-1-AP at 1:25 dilution and Rhodamine-labeled goat anti-rabbit IgG (red).



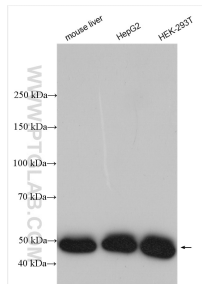
IP Result of anti-EIF2S2 (IP:10227-1-AP, 4ug; Detection:10227-1-AP 1:1000) with mouse liver tissue lysate 4000ug.



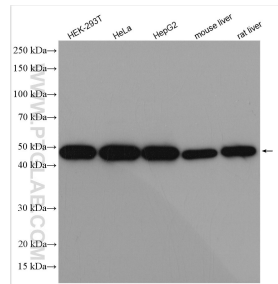
Various lysates were subjected to SDS PAGE followed by western blot with 10227-1-AP (EIF2S2 antibody) at dilution of 1:10000 incubated at room temperature for 1.5 hours.



Various lysates were subjected to SDS PAGE followed by western blot with 10227-1-AP (EIF2S2 antibody) at dilution of 1:10000 incubated at room temperature for 1.5 hours.



Various lysates were subjected to SDS PAGE followed by western blot with 10227-1-AP (EIF2S2 antibody) at dilution of 1:8000 incubated at room temperature for 1.5 hours.



HEK-293T cells were subjected to SDS PAGE followed by western blot with 10227-1-AP (EIF2S2 antibody) at dilution of 1:10000 incubated at room temperature for 1.5 hours.