

Allgemeine Informationen

Katalog-Nr.: 10229-1-AP	GenBank-Zugangsnummer: BC000344	Reinigungsmethode: Antigen-Affinitätsreinigung
Größe: 150ul , Konzentration: 240 µg/ml von Nanodrop;	GeneID (NCBI): 10055	Empfohlene Verdünnungen: WB 1:200-1:1000 IHC 1:20-1:200
Wirt: Kaninchen	Vollständiger Name: SUMO1 activating enzyme subunit 1	Berechnete Masse: 38 kDa
Isotyp: IgG	Beobachtete Masse: 38 kDa	
Immunogen Katalognummer: AG0275		

Anwendungen

Geprüfte Anwendungen:

IF, IHC, WB, ELISA

In Publikationen genannte Anwendungen:

IHC, WB

Getestete Reaktivität:

Human, Maus, Ratte

Zitierte Arten:

Human, Maus

Positivkontrollen:

WB : A431-Zellen, A549-Zellen, COLO 320-Zellen, HEK-293-Zellen, HeLa-Zellen

IHC : humanes Kolonkarzinomgewebe, humanes Hautkrebsgewebe

IF : HeLa-Zellen,

Hinweis-IHC: Antigendemaskierung mit TE-Puffer pH 9,0 empfohlen. (*) Wahlweise kann die Antigendemaskierung auch mit Citratpuffer pH 6,0 erfolgen.

Hintergrundinformationen

SAE1(SUMO-activating enzyme subunit 1) is also named as AOS1, SUA1, UBLE1A and belongs to the ubiquitin-activating E1 family. SAE1 has a calculated molecular mass of 38 kD. It had an apparent molecular mass of 40 kD by SDS-PAGE. SAE1 and UBA2 form a heterodimer that functions as a SUMO-activating enzyme for the sumoylation of proteins(PMID:9920803). Western blot analysis of synchronized HeLa cells detects increased AOS1 expression as cells progressed through S phase, followed by a substantial decrease in G2 phase. Immunofluorescence analysis shows AOS1 and UBA2 distributed throughout nuclei, but they are excluded from nucleoli.(PMID:11481243).

Bemerkenswerte Veröffentlichungen

Verfasser	Pubmed ID	Journal	Anwendung
Lingjie Yan	36414671	Nat Commun	WB
Dong Chen	22342750	Curr Biol	WB
Yang Liu	35859792	Open Med (Wars)	IHC

Lagerung

Lagerungsbedingungen:

Bei -20°C lagern. Nach dem Versand ein Jahr lang stabil

Lagerungspuffer:

PBS mit 0.02% Natriumazid und 50% Glycerin pH 7.3.

Aliquotieren ist nicht notwendig bei -20°C Lagerung

***** 20ul-Größen enthalten 0.1% BSA**

For technical support and original validation data for this product please contact:

T: 1 (888) 4PTGLAB (1-888-478-4522) (toll free in USA), or 1(312) 455-8498 (outside USA)

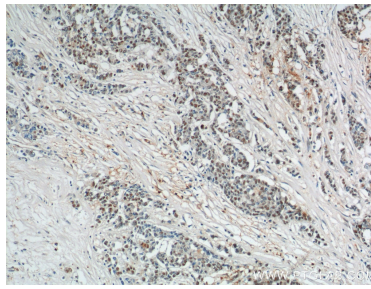
E: proteintech@ptglab.com
 W: ptglab.com

This product is exclusively available under Proteintech Group brand and is not available to purchase from any other manufacturer.

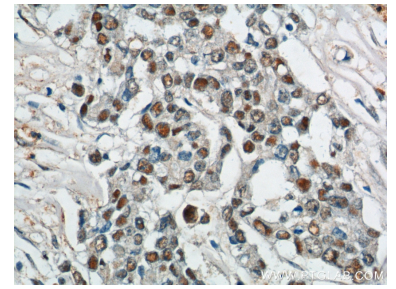
Ausgewählte Validierungsdaten



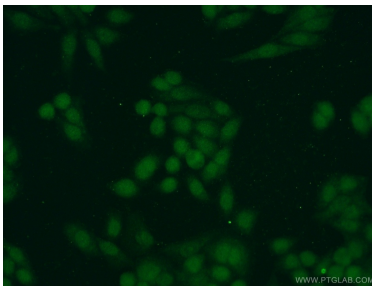
A431 cells were subjected to SDS PAGE followed by western blot with 10229-1-AP (SAE1 antibody) at dilution of 1:300 incubated at room temperature for 1.5 hours.



Immunohistochemical analysis of paraffin-embedded human colon cancer tissue slide using 10229-1-AP (SAE1 Antibody) at dilution of 1:200 (under 10x lens).



Immunohistochemical analysis of paraffin-embedded human colon cancer tissue slide using 10229-1-AP (SAE1 Antibody) at dilution of 1:200 (under 40x lens).



Immunofluorescent analysis of HeLa cells using 10229-1-AP (SAE1 antibody) at dilution of 1:50 and Alexa Fluor 488-conjugated AffiniPure Goat Anti-Rabbit IgG(H+L).