

Nur für Forschungszwecke

NDE1 Polyklonaler Antikörper

Katalog-Nr.: 10233-1-AP

Vorgestelltes Produkt

35 Publikationen



Allgemeine Informationen

Katalog-Nr.:
10233-1-AP

Größe:

150ul, Konzentration: 900 µg/ml von Nanodrop und 453 µg/ml durch die Bradford-Methode mit BSA als Standard;

Wirt:

Kaninchen

Isotyp:

IgG

Immunogen Katalognummer:
AG0336

GenBank-Zugangsnummer:

BC001421

GeneID (NCBI):

54820

Vollständiger Name:

nudE nuclear distribution gene E homolog 1 (A. nidulans)

Berechnete Masse:

335 aa, 38 kDa

Beobachtete Masse:

40 kDa

Reinigungsmethode:

Antigen-Affinitätsreinigung

Empfohlene Verdünnungen:

WB 1:500-1:3000
IP 0.5-4.0 µg für IP und 1:500-1:3000 für WB
IHC 1:20-1:200
IF 1:200-1:800

Anwendungen

Geprüfte Anwendungen:

IF, IHC, IP, WB, ELISA

In Publikationen genannte Anwendungen:

CoIP, IF, IHC, IP, WB

Getestete Reaktivität:

Human, Maus, Ratte

Zitierte Arten:

Human, Maus, Ratte

Hinweis-IHC: Antigendemaskierung mit TE-Puffer pH 9,0 empfohlen. (*) Wahlweise kann die Antigendemaskierung auch mit Citratpuffer pH 6,0 erfolgen.

Positivkontrollen:

WB: A2780-Zellen, HEK-293-Zellen, HeLa-Zellen, HepG2-Zellen, Maushirngewebe, Mauslebergewebe, Rattenhirngewebe, Rattenlebergewebe

IP: HEK-293-Zellen,

IHC: humanes Mammakarzinomgewebe, humanes Kolonkarzinomgewebe

IF: humanes Mammakarzinomgewebe, MCF-7-Zellen

Hintergrundinformationen

NDE1 (NUDE / NUDE1) is a LIS1-interacting protein. A signaling pathway containing NDE1, LIS1, and cytoplasmic dynein is conserved for eukaryotic nuclear migration and has profound impact on neuronal migration during development of the central nervous system. LIS1 and dynein have been shown to be involved in mitosis and NDE1 participates in a subset of dynein function in M phase. NDE1 is specifically phosphorylated in M phase in its serine/threonine phosphorylation motifs, probably by Cdc2 and also Erk1 and Erk2. A fraction of NDE1 binds to centrosomes strongly in interphase and is localized to mitotic spindles in early M phase. Phosphorylation of NDE1 also regulates the cell-cycle-dependent distribution, possibly by increasing its dissociation rate at the microtubule-organizing center. This antibody is a rabbit polyclonal antibody raised against a peptide mapping within human NDE1.

Bemerkenswerte Veröffentlichungen

Verfasser	Pubmed ID	Journal	Anwendung
Shauna L Houlihan	25245017	Elife	IF
Syeda Ridita Sharif	27646688	Mol Cells	IF
Shubhankar Nath	27534551	J Immunol	WB

Lagerung

Lagerungsbedingungen:

Bei -20°C lagern. Nach dem Versand ein Jahr lang stabil

Lagerungspuffer:

PBS mit 0.02% Natriumazid und 50% Glycerin pH 7.3.

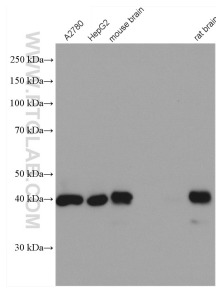
Aliquotieren ist nicht notwendig bei -20°C Lagerung

*** 20ul-Größen enthalten 0.1% BSA

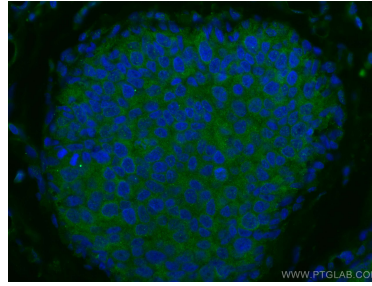
For technical support and original validation data for this product please contact:
T: 1 (888) 4PTGLAB (1-888-478-4522) (toll free in USA), or 1(312) 455-8498 (outside USA)
E: proteintech@ptglab.com
W: ptglab.com

This product is exclusively available under Proteintech Group brand and is not available to purchase from any other manufacturer.

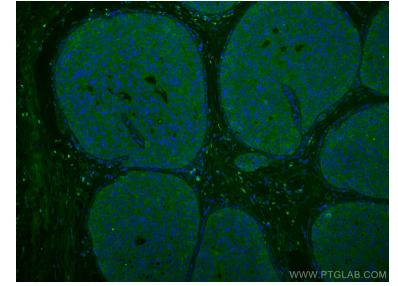
Ausgewählte Validierungsdaten



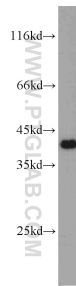
Various cells were subjected to SDS PAGE followed by western blot with 10233-1-AP (NDE1 antibody) at dilution of 1:1500 incubated at room temperature for 1.5 hours.



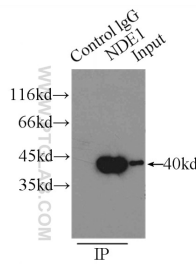
Immunofluorescent analysis of (4% PFA) fixed human breast cancer tissue using NDE1 antibody (10233-1-AP) at dilution of 1:400 and CoraLite®488-Conjugated AffiniPure Goat Anti-Rabbit IgG(H+L).



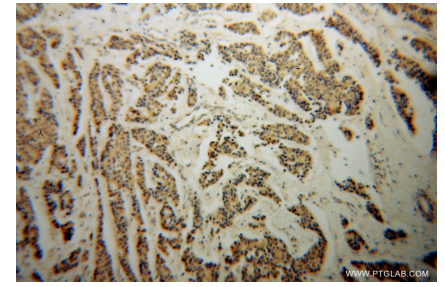
Immunofluorescent analysis of (4% PFA) fixed human breast cancer tissue using NDE1 antibody (10233-1-AP) at dilution of 1:400 and CoraLite®488-Conjugated AffiniPure Goat Anti-Rabbit IgG(H+L).



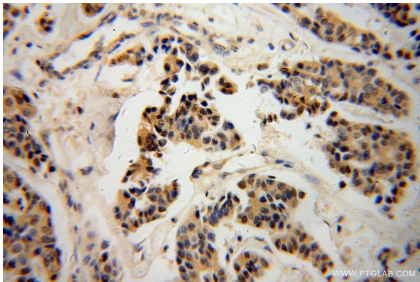
A2780 cells were subjected to SDS PAGE followed by western blot with 10233-1-AP (NDE1 antibody) at dilution of 1:1500 incubated at room temperature for 1.5 hours.



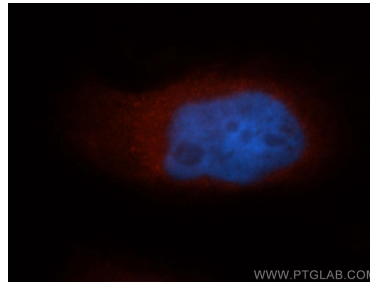
IP Result of anti-NDE1 (IP:10233-1-AP, 3ug; Detection:10233-1-AP 1:1500) with HEK-293 cells lysate 4500ug.



Immunohistochemical analysis of paraffin-embedded human breast cancer using 10233-1-AP (NDE1 antibody) at dilution of 1:100 (under 10x lens).



Immunohistochemical analysis of paraffin-embedded human breast cancer using 10233-1-AP (NDE1 antibody) at dilution of 1:100 (under 40x lens).



Immunofluorescent analysis of MCF-7 cells, using NDE1 antibody 10233-1-AP at 1:50 dilution and Rhodamine-labeled goat anti-rabbit IgG (red). Blue pseudocolor = DAPI (fluorescent DNA dye).