

Nur für Forschungszwecke

S100A11 Polyklonaler Antikörper

Katalog-Nr.: 10237-1-AP

Vorgestelltes Produkt

42 Publikationen



Allgemeine Informationen

Katalog-Nr.:
10237-1-AP

Größe:
150ul, Konzentration: 550 µg/ml von
Nanodrop und 460 µg/ml durch die
Bradford-Methode mit BSA als
Standard;

Wirt:
Kaninchen

Isotyp:
IgG

Immunogen Katalognummer:
AG0343

GenBank-Zugangsnummer:
BC001410

GeneID (NCBI):
6282

Vollständiger Name:
S100 calcium binding protein A11

Berechnete Masse:
105 aa, 12 kDa

Beobachtete Masse:
12 kDa

Reinigungsmethode:

Antigen-Affinitätsreinigung

Empfohlene Verdünnungen:

WB 1:2000-1:12000

IP 0.5-4.0 µg für IP und 1:500-1:2000
für WB

IHC 1:50-1:500

IF 1:200-1:800

Anwendungen

Geprüfte Anwendungen:

FC, IF, IHC, IP, WB, ELISA

In Publikationen genannte Anwendungen:

CoIP, IF, IHC, WB

Getestete Reaktivität:

Human, Maus, Ratte

Zitierte Arten:

Human, Maus, Ratte

Hinweis-IHC: Antigendemaskierung mit TE-Puffer pH 9,0 empfohlen. (*) Wahlweise kann die Antigendemaskierung auch mit Citratpuffer pH 6,0 erfolgen.

Positivkontrollen:

WB : DU 145-Zellen, BxPC-3-Zellen, COLO 320-Zellen, HaCaT-Zellen, HCT 116-Zellen, HEK-293-Zellen, humanes Herzgewebe, humanes Lungengewebe, SKOV-3-Zellen, U2OS-Zellen

IP : PC-3-Zellen,

IHC : humanes Mammakarzinomgewebe, humanes Kolonkarzinomgewebe, humanes Leberkarzinomgewebe, humanes Lungenkarzinomgewebe, humanes Ovarialkarzinomgewebe, humanes Schilddrüsenkarzinomgewebe, humanes Zervixkarzinomgewebe, Mauslebergewebe, Mausnierengewebe, Rattennierengewebe

IF : PC-3-Zellen, BxPC-3-Zellen

Hintergrundinformationen

S100A11 (also known as S100C or calziggarin), is a member of the S100 family of proteins containing 2 EF-hand calcium-binding motifs (PMID: 18694925). S100 proteins are localized in the cytoplasm and/or nucleus of a wide range of cells, and involved in the regulation of a number of cellular processes such as cell cycle progression and differentiation. First discovered in 1989, S100A11 has since been proposed to have direct biological functions in an assortment of physiological processes such as endo- and exocytosis, regulation of enzyme activity, cell growth and regulation, apoptosis and inflammation (PMID: 15241500). Chromosomal rearrangements and altered expression of S100A11 have been implicated in tumor metastasis. This S100A11 antibody (10237-1-AP) has also been instrumental in investigations into S100A11's role in the development of brain tumors in tuberous sclerosis complex (TSC) patients (PMID: 20133820).

Bemerkenswerte Veröffentlichungen

Verfasser	Pubmed ID	Journal	Anwendung
Yu-Pu Liu	33132818	Front Neurosci	IF
Arseniy E Yuzhalin	31545917	Am J Physiol Gastrointest Liver Physiol	IF
Arsila P. K. Ashraf	36200035	Front Cell Dev Biol	IF

Lagerung

Lagerungsbedingungen:

Bei -20°C lagern. Nach dem Versand ein Jahr lang stabil

Lagerungspuffer:

PBS mit 0.02% Natriumazid und 50% Glycerin pH 7.3.

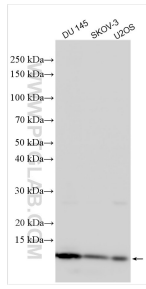
Aliquotieren ist nicht notwendig bei -20°C Lagerung

*** 20ul-Größen enthalten 0.1% BSA

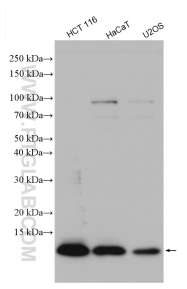
For technical support and original validation data for this product please contact:
T: 1 (888) 4PTGLAB (1-888-478-4522) (toll free in USA), or 1(312) 455-8498 (outside USA)
E: proteintech@ptglab.com
W: ptglab.com

This product is exclusively available under Proteintech Group brand and is not available to purchase from any other manufacturer.

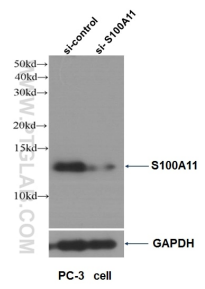
Ausgewählte Validierungsdaten



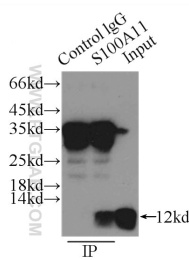
Various lysates were subjected to SDS PAGE followed by western blot with 10237-1-AP (S100A11 antibody) at dilution of 1:6000 incubated at room temperature for 1.5 hours.



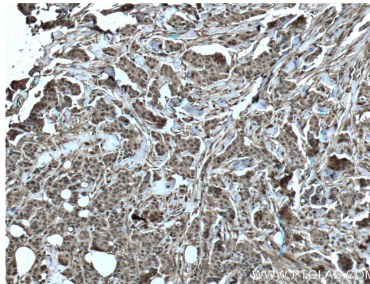
Various lysates were subjected to SDS PAGE followed by western blot with 10237-1-AP (S100A11 antibody) at dilution of 1:1000 incubated at room temperature for 1.5 hours.



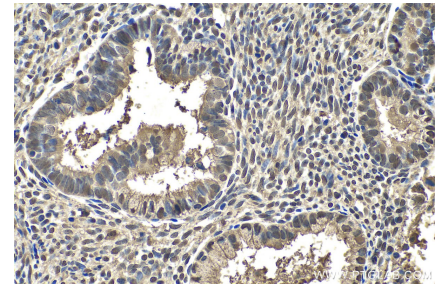
WB result of S100A11 antibody (10237-1-AP, 1:4000) with si-control and si-S100A11 transfected PC-3 cells.



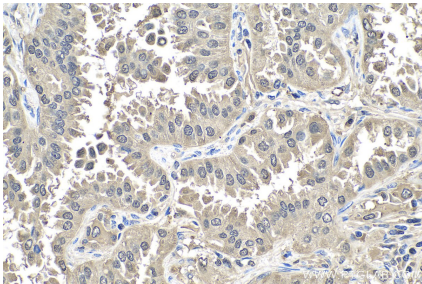
IP Result of anti-S100A11 (IP:10237-1-AP, 3ug; Detection:10237-1-AP 1:1000) with PC-3 cells lysate 1000ug.



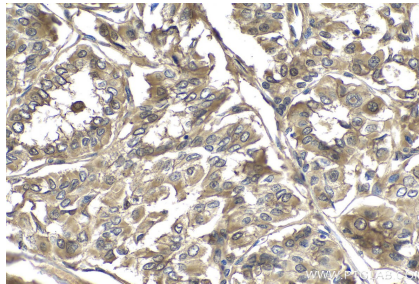
Immunohistochemical analysis of paraffin-embedded human breast cancer tissue slide using 10237-1-AP (S100A11 Antibody) at dilution of 1:200 (under 10x lens). Heat mediated antigen retrieval with Tris-EDTA buffer (pH 9.0).



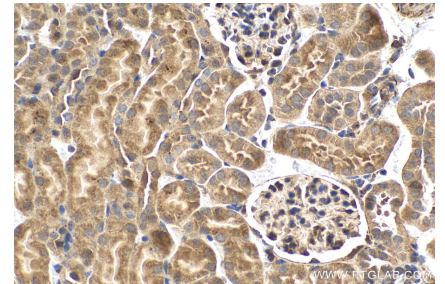
Immunohistochemical analysis of paraffin-embedded human cervical cancer tissue slide using 10237-1-AP (S100A11 antibody) at dilution of 1:1000 (under 40x lens). Heat mediated antigen retrieval with Tris-EDTA buffer (pH 9.0).



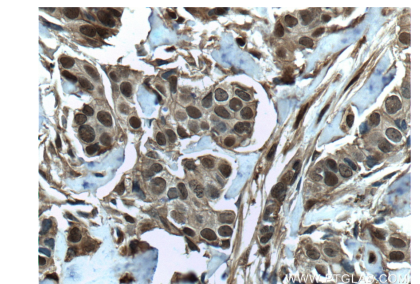
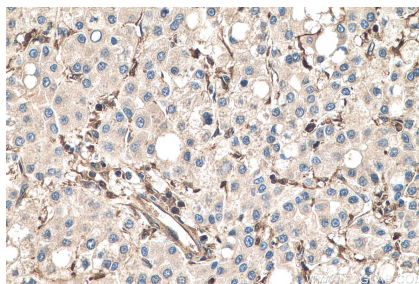
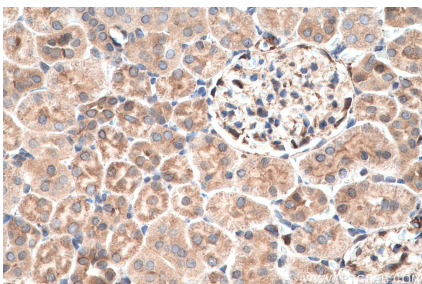
Immunohistochemical analysis of paraffin-embedded human lung cancer tissue slide using 10237-1-AP (S100A11 antibody) at dilution of 1:1000 (under 40x lens). Heat mediated antigen retrieval with Tris-EDTA buffer (pH 9.0).



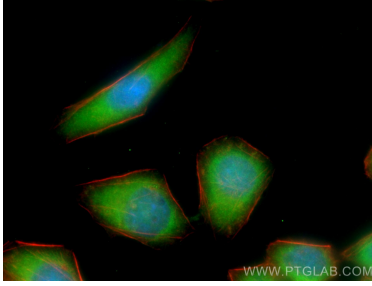
Immunohistochemical analysis of paraffin-embedded human thyroid cancer tissue slide using 10237-1-AP (S100A11 antibody) at dilution of 1:1000 (under 40x lens). Heat mediated antigen retrieval with Tris-EDTA buffer (pH 9.0).



Immunohistochemical analysis of paraffin-embedded mouse kidney tissue slide using 10237-1-AP (S100A11 antibody) at dilution of 1:1000 (under 40x lens). Heat mediated antigen retrieval with Tris-EDTA buffer (pH 9.0).

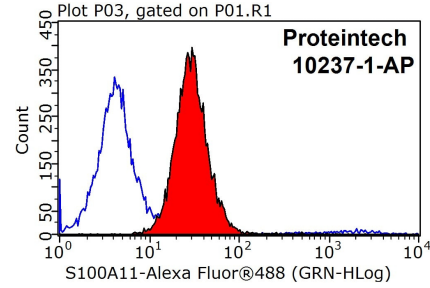


Immunohistochemical analysis of paraffin-embedded rat kidney tissue slide using 10237-1-AP (S100A11 antibody) at dilution of 1:1000 (under 40x lens). Heat mediated antigen retrieval with Tris-EDTA buffer (pH 9.0).



Immunofluorescent analysis of (-20°C Ethanol) fixed PC-3 cells using S100A11 antibody (10237-1-AP) at dilution of 1:400 and CoraLite@488-Conjugated AffiniPure Goat Anti-Rabbit IgG(H+L).

Immunohistochemical analysis of paraffin-embedded human liver cancer tissue slide using 10237-1-AP (S100A11 antibody) at dilution of 1:1000 (under 40x lens). Heat mediated antigen retrieval with Tris-EDTA buffer (pH 9.0).



1X10⁶ MCF-7 cells were stained with 0.2ug S100A11 antibody (10237-1-AP, red) and control antibody (blue). Fixed with 90% MeOH blocked with 3% BSA (30 min). Alexa Fluor 488-conjugated AffiniPure Goat Anti-Rabbit IgG(H+L) with dilution 1:1000.

Immunohistochemical analysis of paraffin-embedded human breast cancer tissue slide using 10237-1-AP (S100A11 Antibody) at dilution of 1:200 (under 40x lens). Heat mediated antigen retrieval with Tris-EDTA buffer (pH 9.0).