

Nur für Forschungszwecke

S100A6 Polyklonaler Antikörper

Katalog-Nr.:10245-1-AP

Vorgestelltes Produkt

16 Publikationen



Allgemeine Informationen

Katalog-Nr.:
10245-1-AP

Größe:

150ul, Konzentration: 1000 µg/ml von 6277

Nanodrop und 640 µg/ml durch die
Bradford-Methode mit BSA als
Standard;

Wirt:

Kaninchen

Isotyp:

IgG

Immunogen Katalognummer:
AG0385

GenBank-Zugangsnummer:

BC001431

GeneID (NCBI):

Vollständiger Name:

S100 calcium binding protein A6

Berechnete Masse:

10 kDa

Beobachtete Masse:

10 kDa

Reinigungsmethode:

Antigen-Affinitätsreinigung

Empfohlene Verdünnungen:

WB 1:500-1:1000

IP 0.5-4.0 µg für IP und 1:500-1:2000

für WB

IHC 1:50-1:500

IF 1:200-1:800

Anwendungen

Geprüfte Anwendungen:

FC, IF, IHC, IP, WB, ELISA

In Publikationen genannte Anwendungen:

IF, IHC, WB

Getestete Reaktivität:

Human

Zitierte Arten:

Affe, Human, Maus, Ratte

Positivkontrollen:

WB: HeLa-Zellen, A549-Zellen

IP: A549-Zellen,

IHC: humanes Pankreaskarzinomgewebe, humanes
Kolonkarzinomgewebe, humanes

Leberkarzinomgewebe, humanes Magenkrebsgewebe

IF: MCF-7-Zellen,

**Hinweis-IHC: Antigendemaskierung mit TE-
Puffer pH 9,0 empfohlen. (*) Wahlweise
kann die Antigendemaskierung auch mit
Citratpuffer pH 6,0 erfolgen.**

Hintergrundinformationen

S100A6 is also named as calcyclin, prolactin receptor-associated protein (PRA), growth factor-inducible protein 2A9 or MLN4. It belongs to S100 family of low molecular weight, acidic, calcium-binding proteins which contain two EF-hand calcium binding sites. S100A6 may function as a calcium sensor to activate several processes in the calcium signal transduction pathway of cell growth, proliferation, secretion and exocytosis. The antibody is specific for S100A6.

Bemerkenswerte Veröffentlichungen

Verfasser	Pubmed ID	Journal	Anwendung
Anchuan Li	27596819	Mol Carcinog	WB,IHC
Elisa Teyssou	33218681	Neurobiol Aging	WB,IHC
Xu Nai-Yu NY	19492239	J Toxicol Environ Health A	WB,IHC

Lagerung

Lagerungsbedingungen:

Bei -20°C lagern. Nach dem Versand ein Jahr lang stabil

Lagerungspuffer:

PBS mit 0.02% Natriumazid und 50% Glycerin pH 7.3.

Aliquotieren ist nicht notwendig bei -20°C Lagerung

***** 20ul-Größen enthalten 0.1% BSA**

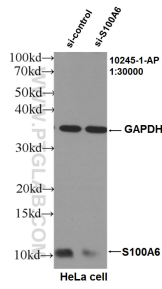
For technical support and original validation data for this product please contact:

T: 1 (888) 4PTGLAB (1-888-478-4522) (toll free
in USA), or 1(312) 455-8498 (outside USA)

E: proteintech@ptglab.com
W: ptglab.com

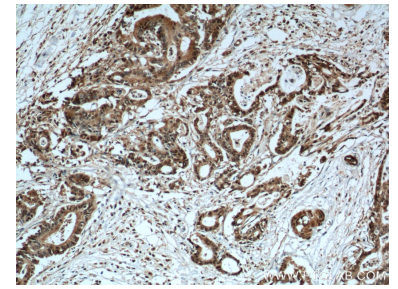
**This product is exclusively available under Proteintech
Group brand and is not available to purchase from any
other manufacturer.**

Ausgewählte Validierungsdaten

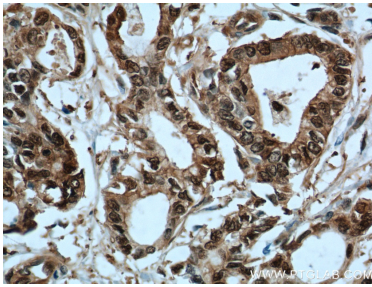


WB result of S100A6 antibody (10245-1-AP, 1:30000) with si-Control and si-S100A6 transfected HeLa cells..

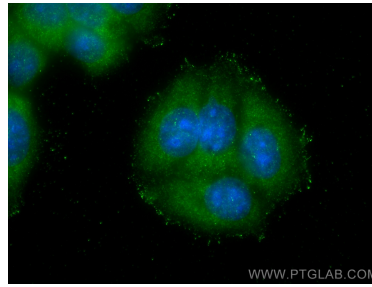
HeLa cells were subjected to SDS PAGE followed by western blot with 10245-1-AP (S100A6 antibody) at dilution of 1:800 incubated at room temperature for 1.5 hours.



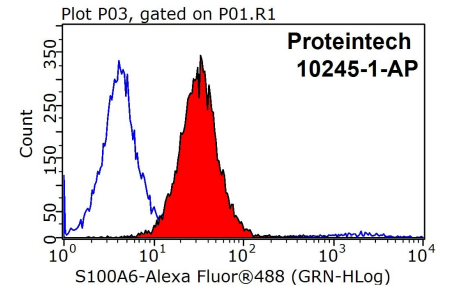
Immunohistochemical analysis of paraffin-embedded human pancreas cancer tissue slide using 10245-1-AP (S100A6 Antibody) at dilution of 1:200 (under 10x lens). Heat mediated antigen retrieval with Tris-EDTA buffer (pH 9.0).



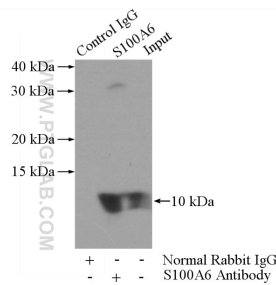
Immunohistochemical analysis of paraffin-embedded human pancreas cancer tissue slide using 10245-1-AP (S100A6 Antibody) at dilution of 1:200 (under 40x lens). Heat mediated antigen retrieval with Tris-EDTA buffer (pH 9.0).



Immunofluorescent analysis of (-20°C Methanol) fixed MCF-7 cells using S100A6 antibody (10245-1-AP) at dilution of 1:400 and CoraLite@488-Conjugated AffiniPure Goat Anti-Rabbit IgG(H+L).



1X10⁶ MCF-7 cells were stained with 0.2ug S100A6 antibody (10245-1-AP, red) and control antibody (blue). Fixed with 90% MeOH blocked with 3% BSA (30 min). Alexa Fluor 488-conjugated AffiniPure Goat Anti-Rabbit IgG(H+L) with dilution 1:1000.



IP Result of anti-S100A6 (IP:10245-1-AP, 3ug; Detection:10245-1-AP 1:1000) with A549 cells lysate 2800ug.