

## Allgemeine Informationen

<b>Katalog-Nr.:</b> 10246-2-AP	<b>GenBank-Zugangsnummer:</b> BC002471	<b>Reinigungsmethode:</b> Antigen-Affinitätsreinigung
<b>Größe:</b> 150ul , Konzentration: 1000 µg/ml von10815 Nanodrop und 533 µg/ml durch die Bradford-Methode mit BSA als Standard;	<b>GeneID (NCBI):</b> Vollständiger Name: complexin 1	<b>Empfohlene Verdünnungen:</b> WB 1:2000-1:10000 IHC 1:20-1:200 IF 1:10-1:100
<b>Wirt:</b> Kaninchen	<b>Berechnete Masse:</b> 15 kDa	
<b>Isotyp:</b> IgG	<b>Beobachtete Masse:</b> 15-20 kDa	
<b>Immunogen Katalognummer:</b> AG0387		

## Anwendungen

<b>Geprüfte Anwendungen:</b> IF, IHC, WB,ELISA	<b>Positivkontrollen:</b> WB : Maushirngewebe, Rattenhirngewebe
<b>In Publikationen genannte Anwendungen:</b> IF, IHC, WB	<b>IHC :</b> Maushirngewebe,
<b>Getestete Reaktivität:</b> Human, Maus, Ratte	<b>IF :</b> SH-SY5Y-Zellen,
<b>Zitierte Arten:</b> Human, Maus, Makake	

**Hinweis-IHC: Antigendemaskierung mit TE-Puffer pH 9,0 empfohlen. (\*) Wahlweise kann die Antigendemaskierung auch mit Citratpuffer pH 6,0 erfolgen.**

## Hintergrundinformationen

Complexin 1 (CPLX1) is a member of the complexin/syntaxin gene family, which are cytosolic proteins that function in synaptic vesicle exocytosis. Complexins are enriched in neurons where they colocalize with syntaxin and SNAP-25. Complexins bind weakly to syntaxin alone and not at all to synaptobrevin and SNAP-25, but strongly to the SNAP receptor-core complex composed of these three molecules. Complexins also compete with alpha-SNAP for binding to the core complex but not with other interacting molecules, including synaptotagmin I, and regulate the sequential interactions of alpha-SNAP and synaptotagmins with the SNAP receptor during exocytosis. CLPX1 binds to the SNAP receptor complex and disrupts it, leading to the release of transmitters. Alterations of complexins may contribute to the molecular substrate for abnormalities of neural connectivity in severe mental disorders.

## Bemerkenswerte Veröffentlichungen

Verfasser	Pubmed ID	Journal	Anwendung
Sandra Siegert	26005852	Nat Neurosci	WB
Hazal Haytural	34013204	Brain Commun	IF
Nicole Arnold	27681124	J Virol	IHC

## Lagerung

**Lagerungsbedingungen:**  
Bei -20°C lagern. Nach dem Versand ein Jahr lang stabil  
**Lagerungspuffer:**  
PBS mit 0.02% Natriumazid und 50% Glycerin pH 7.3.  
 Aliquotieren ist nicht notwendig bei -20°C Lagerung

\*\*\* 20ul-Größen enthalten 0.1% BSA

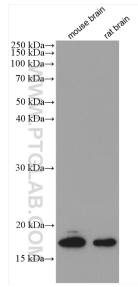
For technical support and original validation data for this product please contact:

T: 1 (888) 4PTGLAB (1-888-478-4522) (toll free in USA), or 1(312) 455-8498 (outside USA)

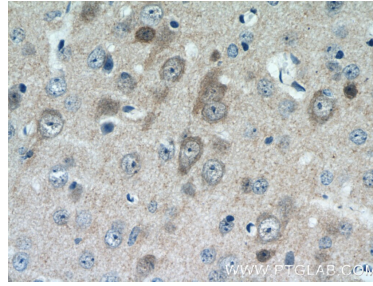
E: [proteintech@ptglab.com](mailto:proteintech@ptglab.com)  
 W: [ptglab.com](http://ptglab.com)

**This product is exclusively available under Proteintech Group brand and is not available to purchase from any other manufacturer.**

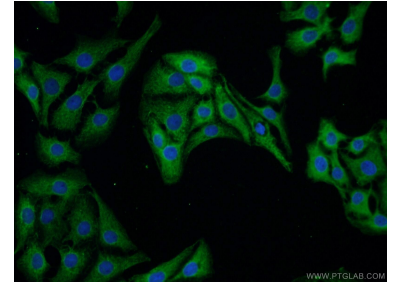
## Ausgewählte Validierungsdaten



Various lysates were subjected to SDS PAGE followed by western blot with 10246-2-AP (CPLX1 antibody) at dilution of 1:5000 incubated at room temperature for 1.5 hours.



Immunohistochemical analysis of paraffin-embedded mouse brain tissue slide using 10246-2-AP (CPLX1 Antibody) at dilution of 1:50 (under 40x lens).



Immunofluorescent analysis of SH-SY5Y cells using 10246-2-AP (CPLX1 antibody) at dilution of 1:25 and Alexa Fluor 488-conjugated AffiniPure Goat Anti-Rabbit IgG(H+L).