

Nur für Forschungszwecke

STAT3 Polyklonaler Antikörper

Katalog-Nr.: 10253-2-AP

Vorgestelltes Produkt

300 Publikationen



Allgemeine Informationen

Katalog-Nr.: 10253-2-AP	GenBank-Zugangsnummer: BC000627	Reinigungsmethode: Antigen-Affinitätsreinigung
Größe: 150ul, Konzentration: 500 µg/ml von Nanodrop;	GeneID (NCBI): 6774	Empfohlene Verdünnungen: WB 1:2000-1:16000 IP 0.5-4.0 ug für IP und 1:1000-1:4000 für WB
Wirt: Kaninchen	Vollständiger Name: signal transducer and activator of transcription 3 (acute-phase response factor)	IHC 1:50-1:500 IF 1:50-1:500
Isotyp: IgG	Berechnete Masse: 770 aa, 88 kDa	
Immunogen Katalognummer: AG0360	Beobachtete Masse: 88 kDa	

Anwendungen

Geprüfte Anwendungen:

FC, IF, IHC, IP, WB, ELISA

In Publikationen genannte Anwendungen:

ChIP, ColP, IF, IHC, IP, WB

Getestete Reaktivität:

Human, Maus, Ratte

Zitierte Arten:

Human, Maus, Ratte, Zebrafisch

Hinweis-IHC: Antigenmaskierung mit TE-Puffer pH 9,0 empfohlen. (*) Wahlweise kann die Antigenmaskierung auch mit Citratpuffer pH 6,0 erfolgen.

Positivkontrollen:

WB: A549-Zellen, A431-Zellen, HeLa-Zellen, Jurkat-Zellen, K-562-Zellen, Mausherzgewebe, Maushirngewebe, Mauslungengewebe, MCF-7-Zellen, NIH/3T3-Zellen, PC-12-Zellen, Rattenhirngewebe

IP: HeLa-Zellen,

IHC: humanes Magenkrebsgewebe, humanes Kolonkarzinomgewebe, humanes Mammakarzinomgewebe, humanes Zervixkarzinomgewebe, Maus-Kolongewebe

IF: HeLa-Zellen,

Hintergrundinformationen

Signal transducer and activator of transcription 3 (acute-phase response factor) (STAT3, synonyms: APRF, FLJ20882, MGC16063) is a member of the STAT protein family. In response to cytokines and growth factors, STAT family members are phosphorylated by the receptor associated kinases, and then form homo- or heterodimers that translocate to the cell nucleus where they act as transcription activators. STAT3 is activated through phosphorylation in response to various cytokines and growth factors including IFNs, EGF, IL5, IL6, HGF, LIF and BMP2. STAT3 mediates the expression of a variety of genes in response to cell stimuli, and thus plays a key role in many cellular processes such as cell growth and apoptosis. The small GTPase Rac1 has been shown to bind and regulate the activity of STAT3. This antibody is a rabbit polyclonal antibody raised against residues near the N terminus of human STAT3. STAT3 exists three isoforms and the molecular weight of each isoform respectively is 83 kDa, 87 kDa and 88 kDa.

Bemerkenswerte Veröffentlichungen

Verfasser	Pubmed ID	Journal	Anwendung
Huanru Wang	31575039	Int J Mol Sci	WB,IF
Lin Deng	36170649	J Med Chem	WB
Xun Chen	36179418	Int Immunopharmacol	WB,IHC,IF

Lagerung

Lagerungsbedingungen:

Bei -20°C lagern. Nach dem Versand ein Jahr lang stabil

Lagerungspuffer:

PBS mit 0.02% Natriumazid und 50% Glycerin pH 7.3.

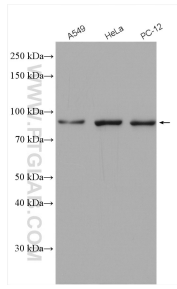
Aliquotieren ist nicht notwendig bei -20°C Lagerung

***** 20ul-Größen enthalten 0.1% BSA**

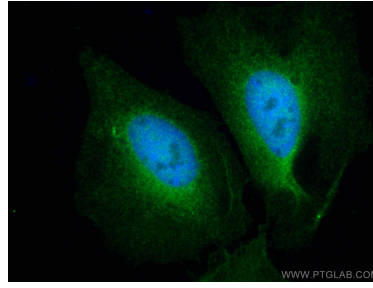
For technical support and original validation data for this product please contact:
T: 1 (888) 4PTGLAB (1-888-478-4522) (toll free in USA), or 1(312) 455-8498 (outside USA)
E: proteintech@ptglab.com
W: ptglab.com

This product is exclusively available under Proteintech Group brand and is not available to purchase from any other manufacturer.

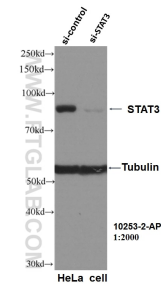
Ausgewählte Validierungsdaten



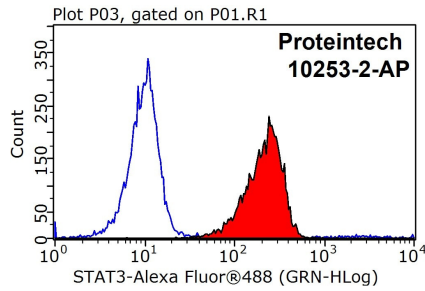
Various lysates were subjected to SDS PAGE followed by western blot with 10253-2-AP (STAT3 antibody) at dilution of 1:2000 incubated at room temperature for 1.5 hours.



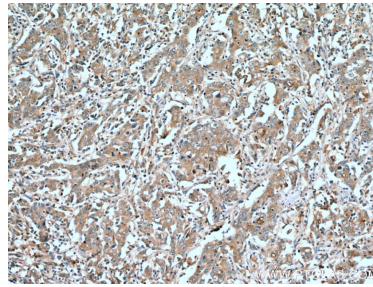
Immunofluorescent analysis of (4% PFA) fixed HeLa cells using STAT3 antibody (10253-2-AP) at dilution of 1:200 and CoraLite®488-Conjugated AffiniPure Goat Anti-Rabbit IgG(H+L). DAPI (blue).



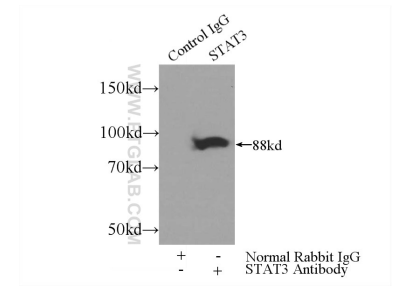
WB result of STAT3 antibody (10253-2-AP, 1:2000) with si-control and si-STAT3 transfected HeLa cells.



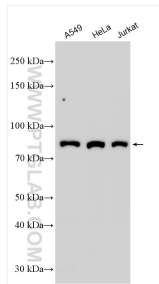
1X10⁶ HeLa cells were stained with 0.2ug STAT3 antibody (10253-2-AP, red) and control antibody (blue). Fixed with 90% MeOH blocked with 3% BSA (30 min). Alexa Fluor 488-conjugated AffiniPure Goat Anti-Rabbit IgG(H+L) with dilution 1:1000.



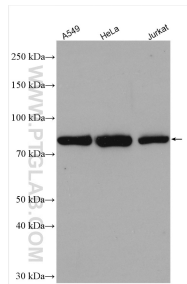
Immunohistochemical analysis of paraffin-embedded human stomach cancer tissue slide using 10253-2-AP (STAT3 antibody) at dilution of 1:200 (under 10x lens). Heat mediated antigen retrieval with Tris-EDTA buffer (pH 9.0).



IP Result of anti-STAT3 (IP:10253-2-AP, 3ug; Detection:10253-2-AP 1:2000) with HeLa cells lysate 3000ug.



Various lysates were subjected to SDS PAGE followed by western blot with 10253-2-AP (STAT3 antibody) at dilution of 1:8000 incubated at room temperature for 1.5 hours.



A549 cells were subjected to SDS PAGE followed by western blot with 10253-2-AP (STAT3 antibody) at dilution of 1:8000 incubated at room temperature for 1.5 hours.