

## Allgemeine Informationen

**Katalog-Nr.:**  
10262-1-AP

**Größe:**  
150ul, Konzentration: 400 µg/ml von Nanodrop und 273 µg/ml durch die Bradford-Methode mit BSA als Standard;

**Wirt:**  
Kaninchen

**Isotyp:**  
IgG

**Immunogen Katalognummer:**  
AG0356

**GenBank-Zugangsnummer:**  
BC001416

**GeneID (NCBI):**  
5531

**Vollständiger Name:**  
protein phosphatase 4 (formerly X), catalytic subunit

**Berechnete Masse:**  
35 kDa

**Beobachtete Masse:**  
35 kDa

**Reinigungsmethode:**

Antigen-Affinitätsreinigung

**Empfohlene Verdünnungen:**

WB 1:500-1:2000  
IP 0.5-4.0 µg für IP und 1:500-1:2000 für WB  
IF 1:50-1:500

## Anwendungen

**Geprüfte Anwendungen:**

IF, IP, WB, ELISA

**In Publikationen genannte Anwendungen:**

IP, WB

**Getestete Reaktivität:**

Human, Maus, Ratte

**Zitierte Arten:**

Human, Maus

**Positivkontrollen:**

**WB:** HEK-293-Zellen, Jurkat-Zellen, Mausnierengewebe

**IP:** Mausnierengewebe,

**IF:** HEK-293-Zellen,

## Hintergrundinformationen

The phosphorylation and dephosphorylation of proteins on serine and threonine residues is an essential means of regulating a broad range of cellular functions. The serine/threonine protein phosphatases (PP) are intimately involved in this process. Serine/threonine protein phosphatase X (PPX; also called protein phosphatase 4 (PP4)) are specifically associated with nuclear factor-kappa B (NF-kappa B) p50, c-Rel, and RelA, which are pleiotropic transcription factors that play central roles in the immune and inflammatory responses, as well as apoptosis. Overexpression of PPX stimulated the DNA-binding activity of c-Rel and activated NF-kappa B-mediated transcription. Although the mechanism by which PPX activates Rel/NF-kappa B-mediated transcription is unclear, PPX appeared to act on Rel/NF-kappa B proteins directly through augmentation of c-Rel activity. It is also possible that PPX may dephosphorylate and subsequently activate other c-Rel-associated transcription factors or other kinases regulating I kappaB (e.g. I kappa B kinases or MEK1). These data suggest that PPX is an activator, but not an inhibitor, of c-Rel/NF-kappa B, which is in contrast to other protein phosphatases.

## Bemerkenswerte Veröffentlichungen

Verfasser	Pubmed ID	Journal	Anwendung
Yue Zheng	35845072	Front Cardiovasc Med	
Sabrina Klemz	34301769	Genes Dev	IP
Chen Lu L	18634786	FEBS Lett	WB

## Lagerung

**Lagerungsbedingungen:**

Bei -20°C lagern. Nach dem Versand ein Jahr lang stabil

**Lagerungspuffer:**

PBS mit 0.02% Natriumazid und 50% Glycerin pH 7.3.

Aliquotieren ist nicht notwendig bei -20°C Lagerung

\*\*\* 20ul-Größen enthalten 0.1% BSA

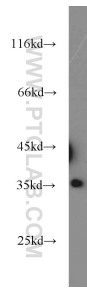
For technical support and original validation data for this product please contact:

T: 1 (888) 4PTGLAB (1-888-478-4522) (toll free in USA), or 1(312) 455-8498 (outside USA)

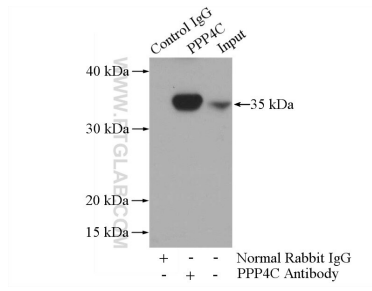
E: [proteintech@ptglab.com](mailto:proteintech@ptglab.com)  
W: [ptglab.com](http://ptglab.com)

This product is exclusively available under Proteintech Group brand and is not available to purchase from any other manufacturer.

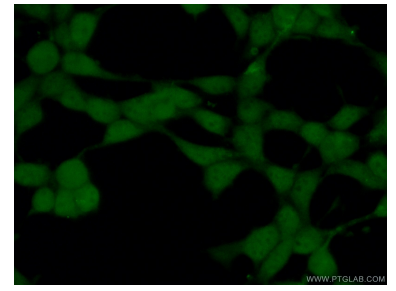
## Ausgewählte Validierungsdaten



HEK-293 cells were subjected to SDS PAGE followed by western blot with 10262-1-AP (PPP4C antibody) at dilution of 1:1000 incubated at room temperature for 1.5 hours.



IP Result of anti-PPP4C (IP:10262-1-AP, 4ug; Detection:10262-1-AP 1:1000) with mouse kidney tissue lysate 4000ug.



Immunofluorescent analysis of (10% Formaldehyde) fixed HEK-293 cells using 10262-1-AP (PPP4C antibody) at dilution of 1:50 and Alexa Fluor 488-conjugated AffiniPure Goat Anti-Rabbit IgG(H+L).