

## Allgemeine Informationen

<b>Katalog-Nr.:</b> 10268-1-AP	<b>GenBank-Zugangsnummer:</b> BC002601	<b>Reinigungsmethode:</b> Antigen-Affinitätsreinigung
<b>Größe:</b> 150ul , Konzentration: 800 µg/ml von Nanodrop;	<b>GeneID (NCBI):</b> 4792	<b>Empfohlene Verdünnungen:</b> WB 1:5000-1:50000 IP 0.5-4.0 ug für IP und 1:5000-1:50000 für WB
<b>Wirt:</b> Kaninchen	<b>Vollständiger Name:</b> nuclear factor of kappa light polypeptide gene enhancer in B-cells inhibitor, alpha	<b>IHC 1:50-1:500</b> <b>IF 1:200-1:800</b>
<b>Isotyp:</b> IgG	<b>Berechnete Masse:</b> 36 kDa	
<b>Immunogen Katalognummer:</b> AG0345	<b>Beobachtete Masse:</b> 36 kDa	

## Anwendungen

### Geprüfte Anwendungen:

FC, IF, IHC, IP, WB, ELISA

### In Publikationen genannte Anwendungen:

FC, IF, IHC, WB

### Getestete Reaktivität:

Hausschwein, Human, Maus, Ratte

### Zitierte Arten:

Hausschwein, Huhn, Human, Maus, Ratte, Rind

**Hinweis-IHC: Antigenmaskierung mit TE-Puffer pH 9,0 empfohlen. (\*) Wahlweise kann die Antigenmaskierung auch mit Citratpuffer pH 6,0 erfolgen.**

### Positivkontrollen:

**WB** : A431-Zellen, Hausschwein-Lebergewebe, HEK-293-Zellen, HeLa-Zellen, HepG2-Zellen, HL-60-Zellen, Jurkat-Zellen, NIH/3T3-Zellen, PC-12-Zellen

**IP** : HeLa-Zellen,

**IHC** : humanes Magengewebe, humanes Nierengewebe, humanes Prostatakarzinomgewebe, Mausnierengewebe

**IF** : A431-Zellen, HeLa-Zellen

## Hintergrundinformationen

Nuclear factor of kappa light polypeptide gene enhancer in B-cells inhibitor, alpha (NFKBIA, synonyms: IKBA, MAD-3, NFKBI). NFKB1 or NFKB2 is bound to REL, RELA , or RELB to form the NFKB complex. The NFKB complex is inhibited by I-kappa-B proteins (NFKBIA or NFKBIB), which inactivate NF-kappa-B by trapping it in the cytoplasm. Phosphorylation of serine residues on the I-kappa-B proteins by kinases (IKBKA, or IKBKB) marks them for destruction via the ubiquitination pathway, thereby allowing activation of the NF-kappa-B complex. Activated NFKB complex translocates into the nucleus and binds DNA at kappa-B-binding motifs such as 5-prime GGGRNNYYCC 3-prime or 5-prime HGGARNYYCC 3-prime.

## Bemerkenswerte Veröffentlichungen

Verfasser	Pubmed ID	Journal	Anwendung
Menghui Xu	36290677	Antioxidants (Basel)	WB
Yuqian Wang	32942847	J Agric Food Chem	WB
Kun-Yi Li	32920833	J Neurochem	WB

## Lagerung

### Lagerungsbedingungen:

Bei -20°C lagern. Nach dem Versand ein Jahr lang stabil

### Lagerungspuffer:

PBS mit 0.02% Natriumazid und 50% Glycerin pH 7.3.

Aliquotieren ist nicht notwendig bei -20°C Lagerung

**\*\*\* 20ul-Größen enthalten 0.1% BSA**

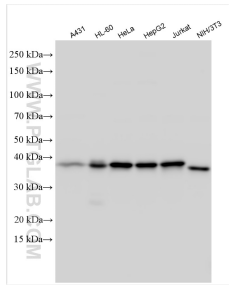
For technical support and original validation data for this product please contact:

T: 1 (888) 4PTGLAB (1-888-478-4522) (toll free in USA), or 1(312) 455-8498 (outside USA)

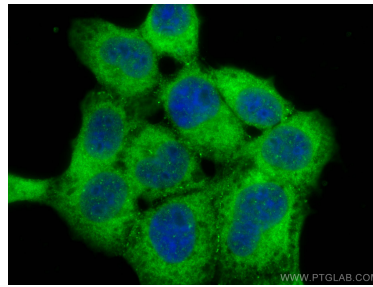
E: [proteintech@ptglab.com](mailto:proteintech@ptglab.com)  
 W: [ptglab.com](http://ptglab.com)

**This product is exclusively available under Proteintech Group brand and is not available to purchase from any other manufacturer.**

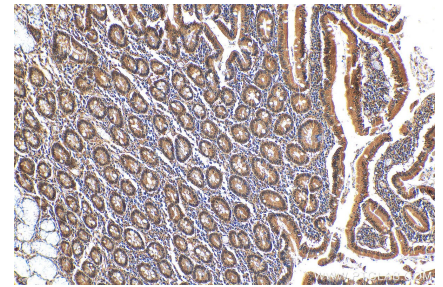
## Ausgewählte Validierungsdaten



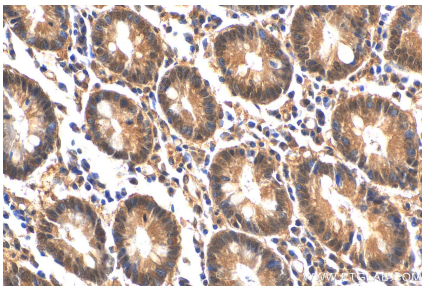
Various lysates were subjected to SDS PAGE followed by western blot with 10268-1-AP (IκB Alpha antibody) at dilution of 1:10000 incubated at room temperature for 1.5 hours.



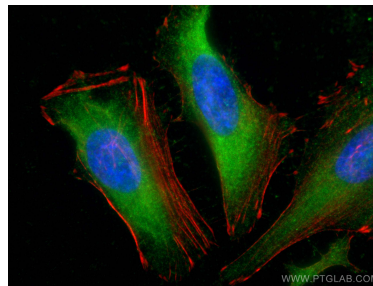
Immunofluorescent analysis of (-20°C Methanol) fixed A431 cells using IκB Alpha antibody (10268-1-AP) at dilution of 1:400 and CoralLite®488-Conjugated AffiniPure Goat Anti-Rabbit IgG(H+L).



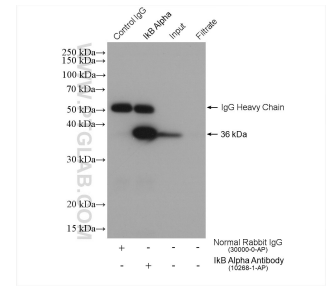
Immunohistochemical analysis of paraffin-embedded human stomach tissue slide using 10268-1-AP (IκB Alpha antibody) at dilution of 1:200 (under 10x lens).



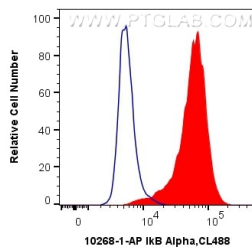
Immunohistochemical analysis of paraffin-embedded human stomach tissue slide using 10268-1-AP (IκB Alpha antibody) at dilution of 1:200 (under 40x lens).



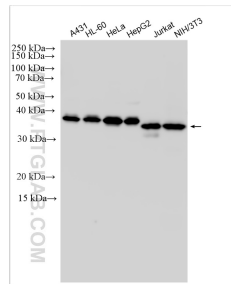
Immunofluorescent analysis of (-20°C Ethanol) fixed HeLa cells using IκB Alpha antibody (10268-1-AP) at dilution of 1:200 and CoralLite®488-Conjugated AffiniPure Goat Anti-Rabbit IgG(H+L), CL594-phalloidin (red).



IP result of anti-IκB Alpha(IP:10268-1-AP, 4ug; Detection:10268-1-AP 1:10000) with HeLa cells lysate 1720 ug.



1X10<sup>6</sup> HeLa cells were intracellularly stained with 0.4 ug Anti-Human IκB Alpha (10268-1-AP) and CoralLite®488-Conjugated AffiniPure Goat Anti-Rabbit IgG(H+L) at dilution 1:1000 (red), or 0.4 ug Control Antibody. Cells were fixed with 4% PFA and permeabilized with Flow Cytometry Perm Buffer (PF00011-C).



Various lysates were subjected to SDS PAGE followed by western blot with 10268-1-AP (IκB Alpha antibody) at dilution of 1:15000 incubated at room temperature for 1.5 hours.