

Allgemeine Informationen

Katalog-Nr.: 10291-1-AP	GenBank-Zugangsnummer: BC001119	Reinigungsmethode: Antigen-Affinitätsreinigung
Größe: 150ul , Konzentration: 233 µg/ml durch die Bradford-Methode mit BSA als Standard;	GeneID (NCBI): 3692	Empfohlene Verdünnungen: WB 1:2000-1:16000 IHC 1:20-1:200 IF 1:50-1:500
Wirt: Kaninchen	Vollständiger Name: eukaryotic translation initiation factor 6	
Isotyp: IgG	Berechnete Masse: 27 kDa	
Immunogen Katalognummer: AG0324	Beobachtete Masse: 27 kDa	

Anwendungen

Geprüfte Anwendungen:

IF, IHC, WB, ELISA

In Publikationen genannte Anwendungen:

WB

Getestete Reaktivität:

Human, Maus, Ratte

Zitierte Arten:

Human

Hinweis-IHC: Antigenmaskierung mit TE-Puffer pH 9,0 empfohlen. (*) Wahlweise kann die Antigenmaskierung auch mit Citratpuffer pH 6,0 erfolgen.

Positivkontrollen:

WB : A375-Zellen, COLO 320-Zellen, HeLa-Zellen, HepG2-Zellen, Mauslebergewebe

IHC : humanes Prostatakarzinomgewebe, humanes Kolongewebe

IF : HeLa-Zellen,

Hintergrundinformationen

p27(BBP/eIF6) is an evolutionarily conserved protein that was originally identified as p27(BBP). It functions as an interactor of the cytoplasmic domain of integrin 4 and as the putative translation initiation factor eIF6. p27BBP is found in two pools: one nuclear pool enriched in the perinucleolar region, and one cytoplasmic pool. p27BBP binds to the fibronectin type III domains of integrin 4 subunit (ITGB4), an important functional component of hemidesmosomes, and help link ITGB4 to the intermediate filament cytoskeleton. In vitro and in vivo studies demonstrated that p27BBP is essential for cell viability and has a primary function in the biogenesis of the 60S ribosomal subunit. p27BBP protein is increased in rapidly cycling cells and decreased in villous cells committed to apoptotic cell death. In dysplastic colorectal adenomas and carcinomas, p27BBP displayed a large increase of its nucleolar component and was associated with the nuclear matrix. In particular, p27BBP increased progressively from adenomas to carcinomas and was related to the tumor stage.

Bemerkenswerte Veröffentlichungen

Verfasser	Pubmed ID	Journal	Anwendung
Meina Shi	26557144	Evid Based Complement Alternat Med	WB
Kaosheng Lv	33711283	Cell Stem Cell	WB
Henson Adrianna LAL	23792098	Biochem Biophys Res Commun	WB

Lagerung

Lagerungsbedingungen:

Bei -20°C lagern. Nach dem Versand ein Jahr lang stabil

Lagerungspuffer:

PBS mit 0.02% Natriumazid und 50% Glycerin pH 7.3.

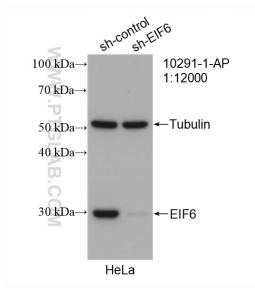
Aliquotieren ist nicht notwendig bei -20°C Lagerung

***** 20ul-Größen enthalten 0.1% BSA**

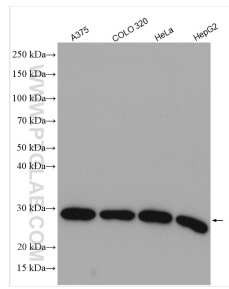
For technical support and original validation data for this product please contact:
 T: 1 (888) 4PTGLAB (1-888-478-4522) (toll free in USA), or 1(312) 455-8498 (outside USA)
 E: proteintech@ptglab.com
 W: ptglab.com

This product is exclusively available under Proteintech Group brand and is not available to purchase from any other manufacturer.

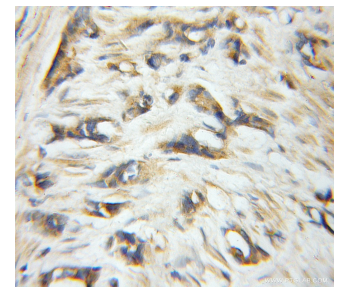
Ausgewählte Validierungsdaten



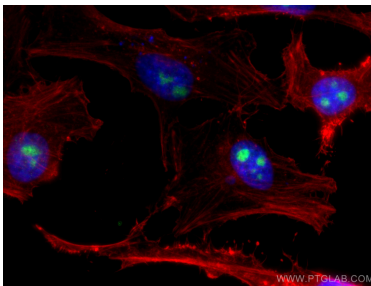
WB result of EIF6 antibody (10291-1-AP; 1:12000; incubated at room temperature for 1.5 hours) with sh-Control and sh-EIF6 transfected HeLa cells.



Various lysates were subjected to SDS PAGE followed by western blot with 10291-1-AP (EIF6 antibody) at dilution of 1:8000 incubated at room temperature for 1.5 hours.



Immunohistochemical analysis of paraffin-embedded human prostate cancer using 10291-1-AP (EIF6 antibody) at dilution of 1:50 (under 10x lens).



Immunofluorescent analysis of (4% PFA) fixed HeLa cells using EIF6 antibody (10291-1-AP) at dilution of 1:200 and Coralite@488-Conjugated AffiniPure Goat Anti-Rabbit IgG(H+L), CL594-Phalloidin (red).